

## Downy Hollow Story Breeding Season 2021/22

### Key dates/Observations

Not sure if there was an initial incubation that started around 23 October and then eggs were predated, (or if this was a false start, or phantom incubation). Conclude that most likely the eggs were predated and the second incubation started about a month later

**28 Nov** – incubation of eggs starts

**21 Dec** – male still on eggs probably hatched around this time

**27 Dec** – Chicks being fed in hollow. Larissa reported in CNM.

**31 Jan** – first sighting of male chick

**6 Feb** – first sighting of female chick

**11 Feb** - male chick fledged before 630pm

**12 Feb** – female chick fledged at 905 am. (Caught on fixed camera.)

Time from chick being visible at hollow to fledging – Chick 1 male 11 days, Chick 2 female 6 days

Time from Incubation of eggs to fledging – chick 1 – 75 days chick 2 – 76 days

**14 October 2021** Male GG was looking out of hollow



Photo taken by Larissa

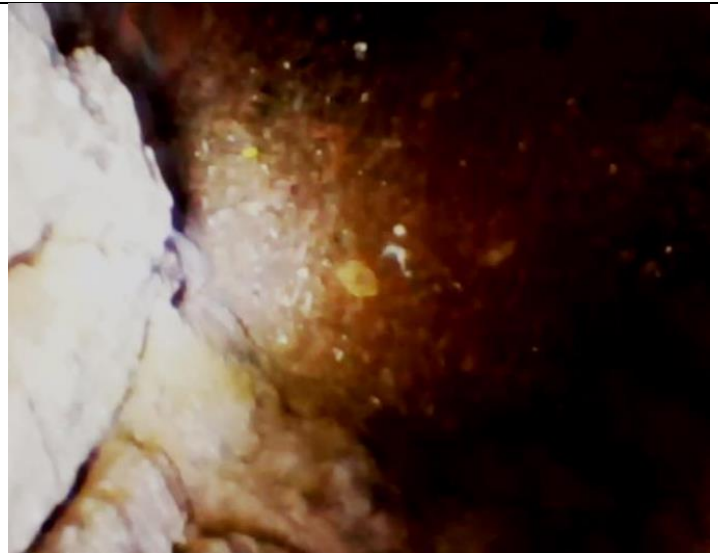
**16 October 2021** Pole camera showed that there were no eggs in the hollow. This hollow is usually one of the last ones in the season that the chicks fledge from. The female was on the tree and male in nearby tree.

**26 October 2021** (from my hollow update report) I wrote pretty sure incubation has started in the last few days. Say from 23 October. Comment must have been made based on observations at the hollow and discussions with Larissa.

**31 October 2021** not tickled, All quiet. ( I did not want to disturb the GGs and was fairly sure that they had started incubation of eggs)

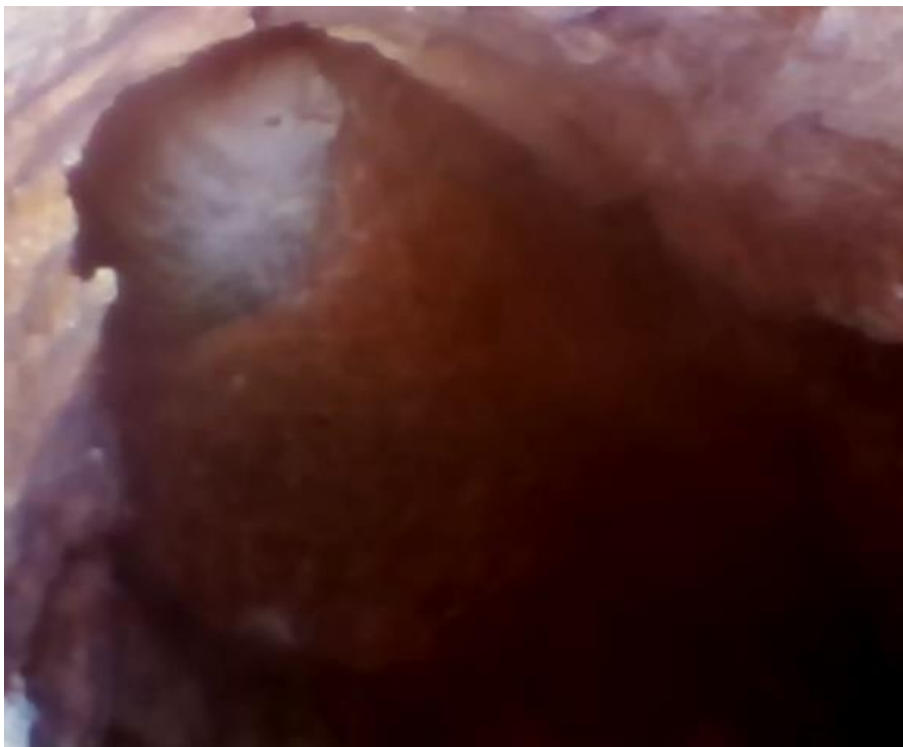


**26 November 2021** the male and female GG both came out of the hollow onto the rim while Larissa and I were talking close to the hollow. The female after a few close moments with her partner flew off. We had assumed that maybe this was a changeover



**26 November** - I expected to see nestlings in the hollow, but was unable to see anything of interest. Maybe the small white bits are pieces of egg shell

**29 November 2021** – (refer my email of 30 November) I tickled the hollow and a GG came out.



**21 December 2021 0914hrs** the female came out of the hollow when I tickled the hollow. I then put the pole camera in to find this male. Originally I thought it was a chick due to the poor quality of the photo. Later on and after rechecking this photo I concluded that it was the male sitting on egg/s. The grey beak is a give away. But the red crown did not come out well in the photo. (Chris your spreadsheet may need correcting on this date.)





**27 Dec 2021** Photo and comments by Larissa CNM Female waited outside hollow for ten minutes or so, then entered and could be heard feeding a nestling. Did not reappear.  
Hence can probably assume that the eggs must have hatched soon after the pole camera photo of the 21 December.

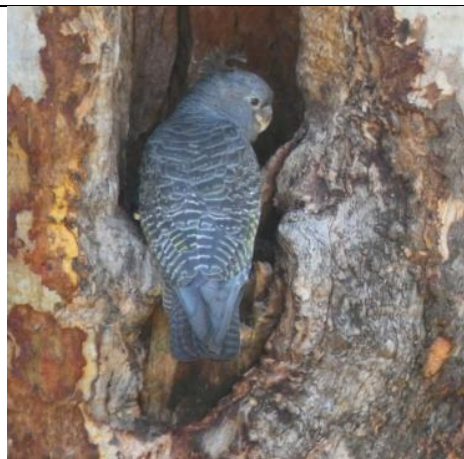


**14 Jan 2022 1948hrs** male on hollow

**16 Jan 2022 1057hrs** male on hollow coming out after feeding young.



**18 Jan 1539hrs** female coming up after feeding



**23 Jan 1853hrs** female going into the hollow to feed young. Male was nearby



**26 Jan 1009hrs** Female coming out after feeding young





**31 Jan 1857hrs** male at hollow with loose feather



**31 Jan 1903hrs** can see loose feather and missing bit of red on head. Maybe incurred defending hollow.



**31 Jan 1908hrs** First sighting of chick. I could only see it for about 20 seconds and then the mother flew across and covered it up



**1909hrs** Mum covering the chick up.



**1 Feb 1720hrs** GG pair preening each other at entrance to hollow. Minutes earlier they had been feeding the young in the hollow



**3 Feb 1905hrs** male GG coming out of the hollow after feeding.



**4 Feb 1001hrs** male chick small wing stretch





**4 Feb 1740hrs** mum feeding son on rim of hollow



**4 Feb 1751hrs** Dad and son



**4 Feb 1750hrs** close to a full wing stretch



**5 Feb 1415hrs** Father preening his son went on for at least 10 mins, then feeding and more preening



**5 Feb 1440hrs** dad could be either preening son or looking into the hollow. Maybe there is another chick

**5 Feb 1700hrs to 1840hrs** nothing happening at the hollow





**6 Feb 0946hrs** Laura and Stacey arrived to check if the chick was still there. (if not they plan to measure hollow), If chick still there then they will set up a fixed camera.



**6 Feb 0947hrs** the adult male father looked on from a nearby tree but did not seem too concerned.



**6 Feb 1010hrs** Stacey setting up her first fixed camera. The father eventually complained a bit around 1010hrs (Still in a nearby tree). Stacey looked into the hollow and saw two chicks, a male and female. We had not seen the female yet at this stage and my pole camera photo of 21 Dec with adult male on egg/s did not show number of eggs. Bit surprised that the female chick had not been visible at the hollow yet. We were only expecting one chick. Although feeding in the hollow had been noisy and seem to go on for a long time.



**6 Feb 1013hrs** – Photo taken by Stacey using smart phone, showing 2 chicks in the hollow.





**6 Feb 1124hrs** the male chick finally popped up at 1110hrs and then did this full wing stretch later. Must be close to fledging



**6 Feb 1201hrs** male chick at edge looking out. Parents have not come in to feed at this stage. I have not seen feeding since arriving.





**6 Feb 1852hrs** cleaning claws and more wing stretching



**6 Feb 1815hrs** my first sighting of the female chick. What a beauty.

**6 Feb 1926hrs** both parents were calling to chicks



**10 Feb 1755hrs** the male chick high on edge of hollow looking close to fledging. I arrived back from a platypus survey at Scottsdale surprised to find the male still at the hollow but very close to fledging. Larissa, Jen and Cam had ensured daily and sometimes twice daily monitoring of the hollow over the last few days. The male was also chewing the edge of the hollow. The male chick was still in the hollow at 2000hrs when it was almost dark and I left.





**10 Feb 1902hrs** Mum and dad calling to the chicks trying to get them to fledge.



**10 Feb 1915hrs** Dad and daughter



**10 Feb 1920hrs** Siblings not long before fledging waiting for a feed.



**11 Feb 1945hrs** female back on the hollow for the night. The male chick is no longer there. It fledged sometime during the day before 1830hrs when Larissa arrived.



**12 Feb 0857hrs** the parents flew across landed on the hollow tree and then flew to a nearby tree calling softly to the hollow. I had to leave. Larissa arrived at 1015hrs She said she heard a young Gang gang call in the valley not too far away just after she arrived and after waiting an hour and seeing no sign of the chick or parents she was sure that the female chick had fledged.

**Time of fledging of female chick recorded as 10am.**

**This was my estimate at the time Fixed video camera confirmed time as 0905hrs.**

I missed the fledging by a few minutes



**13 Feb 1636hrs** I checked the hollow with the pole camera and confirmed that the chicks had both fledged. There was still an egg in the hollow. This will be recovered and examined. Videos from the fixed camera may be able to confirm exact times of fledging (but fixed cameras had proved unreliable in picking up fledging last season).





12 Feb 0905hrs – the fixed camera took a video of the female chick fledging ( I received this email from Laura about a week later) It all looked a very straight forward fledging. Seems like I had only missed it by 7 mins.



The young chick successfully fledges and is on her way to a new life outside the safety and confines of the hollow, which is all she has known since hatching 7 to 8 weeks ago.