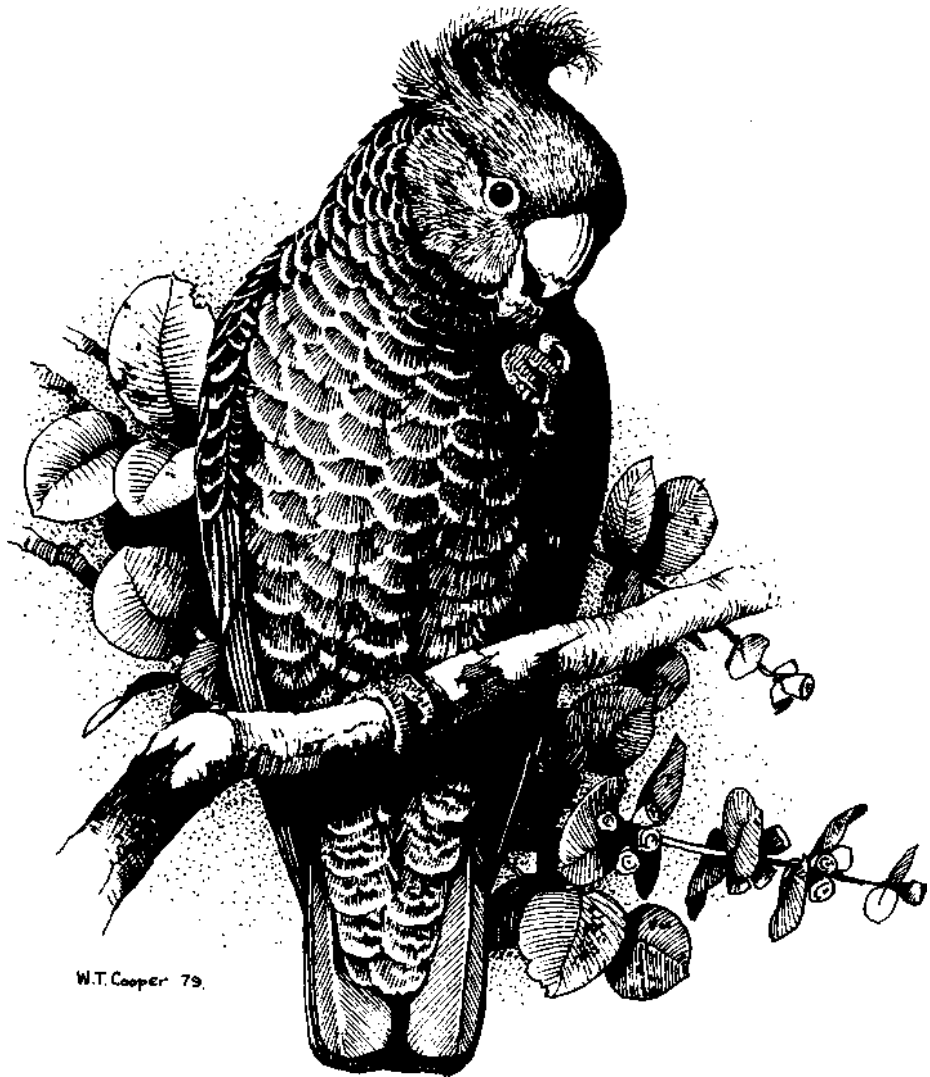


ISSN 0314-8211

CANBERRA BIRD NOTES

Volume 18
Number 4
December 1993

Registered by Australia Post - publication No NBH 0255



CANBERRA ORNITHOLOGISTS GROUP INC.

P.O. Box 301, Civic Square, ACT 2608
Committee Members
(1993)

		Work	Home
<i>President</i>	Jenny Bounds	--	288 7802
<i>Vice-President</i>	Paul Fennell	205 9401	254 1804
<i>Secretary</i>	Robin Smith	261 3924	248 0378
<i>Assistant Secretary</i>	Sarah Martin	272 5463	281 3574
<i>Treasurer</i>	Noel Luff	245 6211	288 3291
<i>Member</i>	Barbara Allan	--	254 6520
<i>Member</i>	Tony Lawson	264 3125	288 9430
<i>Member</i>	Bruce Lindenmayer	288 5957	288 5957
<i>Member</i>	Ann McKenzie	--	288 0167
<i>Member</i>	Pat Muller	298 9281	297 8853
<i>Member</i>	David Purchase	258 2252	258 2252
<i>Member</i>	Richard Schodde	242 1693	281 3732

The following people represent Canberra Ornithologists Group in various ways although they may not be formally on the Committee:

<i>ADP Support</i>	Cedric Bear	--	258 3169
<i>Australian Bird Count</i>	Chris Davey	242 1600	254 6324
<i>Barren Grounds, Representative</i>	Tony Lawson	264 3125	288 9430
<i>Canberra Bird Notes, Editor</i>	David Purchase	258 2252	258 2252
<i>Assistant Editor</i>	Grahame Clark	--	254 1279
<i>Conservation Council, Representatives</i>	Bruce Lindenmayer	288 5957	288 5957
	David Pfanner	--	247 7572
	Philip Veerman	--	231 4041
<i>Database Manager</i>	Ian Baird	242 1600	248 5424
<i>Exhibitions</i>	Ann McKenzie	--	288 0167
<i>Field Trips, Coordinator</i>	Jenny Bounds	--	288 7802
<i>Gang Gang, Editor</i>	Barbara Allan	--	254 6520
<i>Garden Bird Survey, Coordinator</i>	Philip Veerman	--	231 4041
<i>Hotline</i>	Ian Fraser	--	247 3064
<i>Librarian</i>	Graham Browning	--	288 9450
<i>Meetings, Talks Coordinator</i>	Barbara Allan	--	254 6520

(Continued inside back cover)

ANNUAL BIRD REPORT: 1 JULY 1990 TO 30 JUNE 1991

Canberra Ornithologists Group

Introduction

This Annual Bird Report summarises all records of species that occurred in the Canberra region between 1 July 1990 and 30 June 1991.

Canberra Ornithologists Group redefined its area of interest, the Canberra region, at the time of the launching of the COG Data Collection Framework, in January 1990. The boundaries of the region now lie along the lines of longitude 148°40' to 149°45'E. and latitude 34°45' to 36°00'S. (see Figure 1).

A grid system is used for the collection and recording of information in the COG Database of Bird Observations. The Canberra region is divided into 780 grid cells, each 2.5 minutes of longitude by 2.5 minutes of latitude. Each grid cell is identified by an alpha-numeric code, A to Z across the region from west to east and 1 to 30 from north to south. The village of Tharwa, for example, lies in grid cell J19. The location of the grid cells is shown in Figure 2.

The goal for COG will be to systematically survey all 780 grid cells in the region on a continuing basis.

There were 214 species recorded in the region during the twelve month period to 30 June 1991, an increase of three on the previous twelve months. All records for Status 3 species, as defined in "A Field List of the Birds of Canberra and District" (Canberra Ornithologists Group 1985), included in this report, have been examined and endorsed by the COG Rarities Panel. A number of reported sightings involving Status 3 species were not submitted to the Rarities Panel by the observers and so, being unconfirmed, are not included in this report.

Highlights of the Year

The highlights of the 1990-91 year in the Canberra region included:

- As in the previous year, Royal Spoonbill *Platalea regia* numbers remain large, particularly at Lake George;
- A Little Bittern *Ixobrychus minutus* was sighted at Acacia Inlet, the first record since February 1988;
- Two records of Spotless Crakes *Porzana tabuensis*, the first since June 1988;

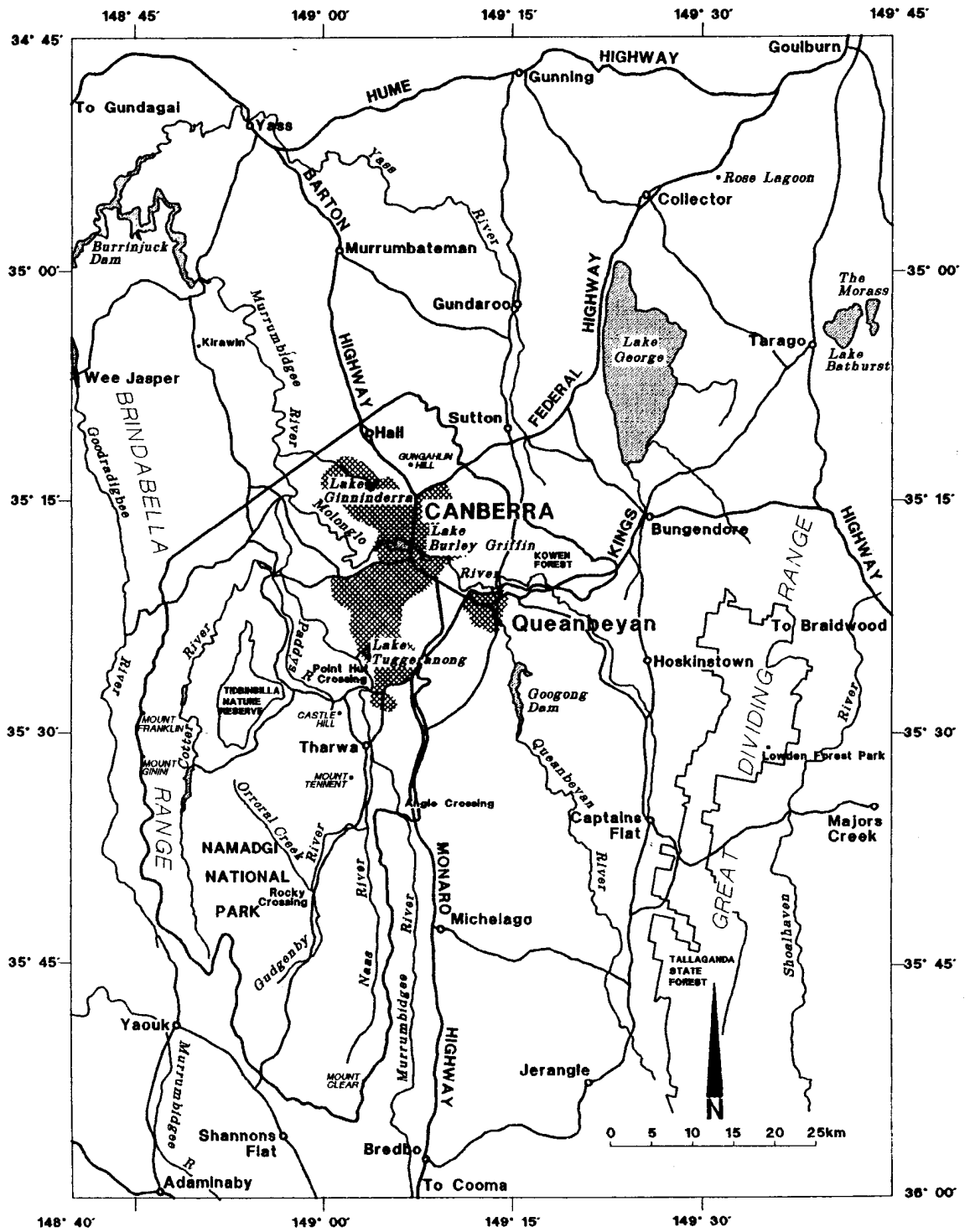


Figure 1. The Canberra region.

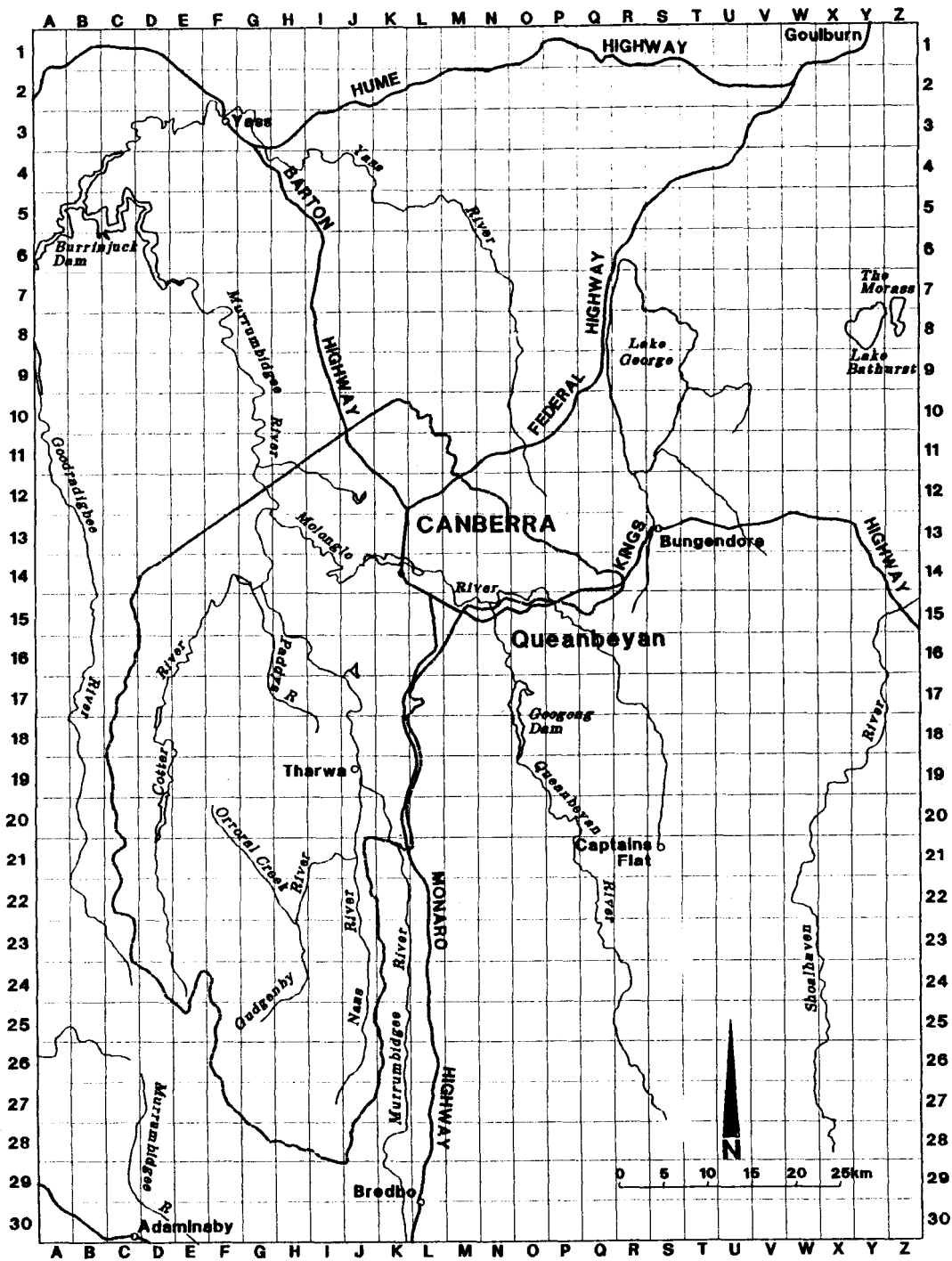


Figure 2. Location of the COG Database grids.

- An unusually large number (454) of Red-capped Plovers *Charadrius ruficapillus* at Lake George in April;
- The first records at Lake George of a Wood Sandpiper *Tringa glareola* and a Bar-tailed Godwit *Limosa lapponica*;
- A Spotted Quail-thrush *Cinclosoma punctatum* at Black Mountain. In the Canberra region this species is normally restricted to areas some distance from urban habitation;
- The first record in Canberra of a Black Honeyeater *Certhionyx niger*;
- A breeding record for the Little Raven *Corvus mellori* in Namadgi National Park.

Rainfall and Temperature

The total rainfall for the year was 520 mm, again down (1988-89 - 968mm, 1989-90 - 654mm) and well below the long-term yearly average of 630 mm (see Figure 3). While January and June figures were above the long-term average, monthly totals for February, March and April were barely one-third of averages for those months.

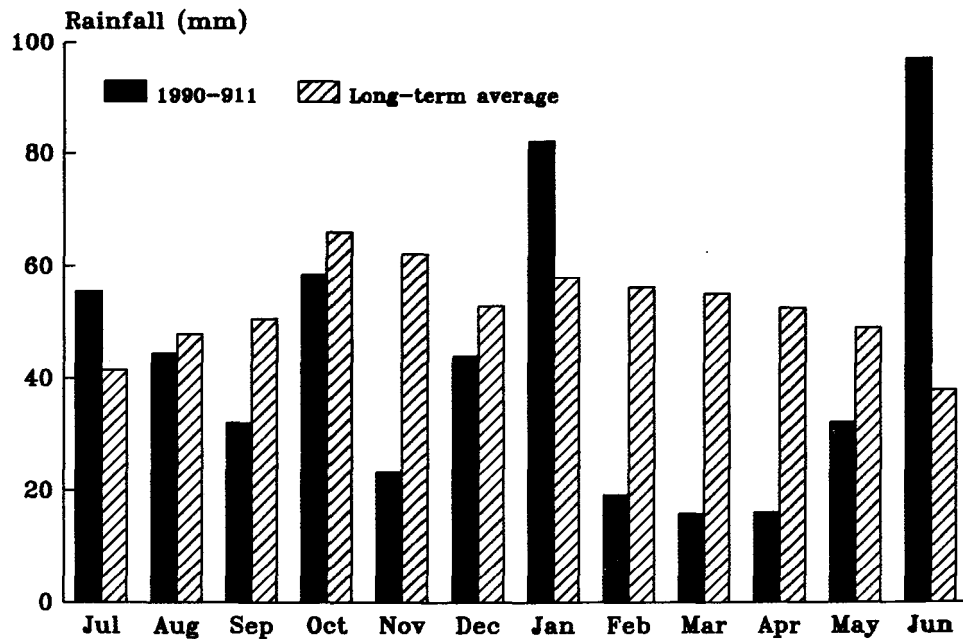


Figure 3. Monthly rainfall totals for 1990-91 and long-term average.

The average monthly temperature was largely consistent with the long-term figure although slightly warmer in the summer months (see Figure 4).

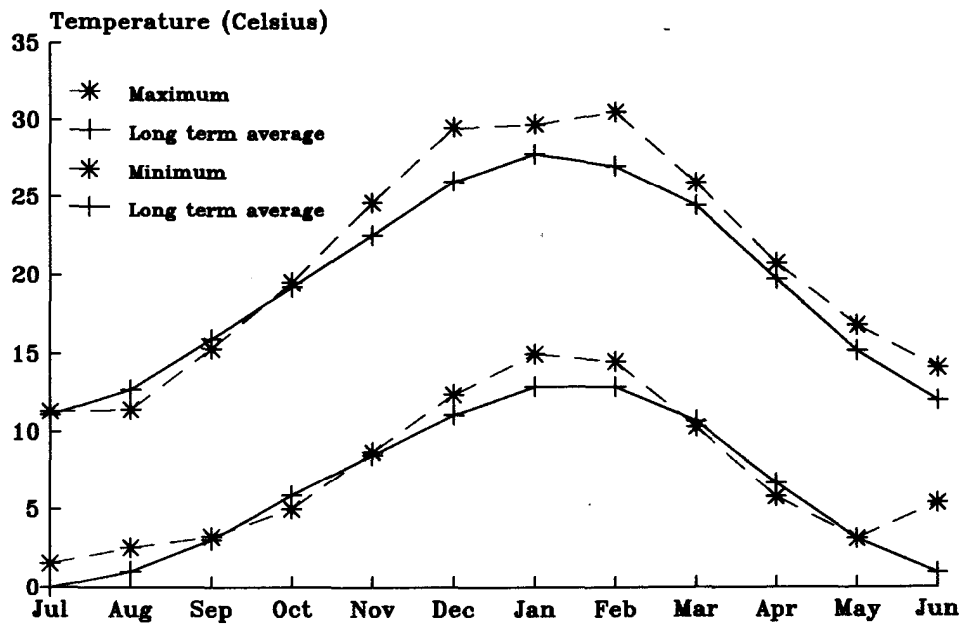


Figure 4. Monthly average maximum and minimum temperatures and long-term averages.

Garden Bird Survey

The Garden Bird Survey data are derived from standard charts on which participants record observations on a weekly basis at sites throughout suburban Canberra. Observers record the maximum number of each species seen at any one time during a week within a radius of 100 metres of their home or workplace. A detailed description of the Garden Bird Survey has been made by Hermes (1981). Fifty-nine charts were received for 1990-91. The approximate locations of the 59 sites are shown in Figure 5.

In total, 119 species were recorded on the Garden Bird Survey charts submitted for 1990-91. Statistical values of abundance (A), distribution (F), presence (W), recording rate (R), and group size (G) are shown in Table 1 together with the percentage change in these values when compared with the average of the previous year (1989-90). The methods used to calculate the values are described in Appendix 1.

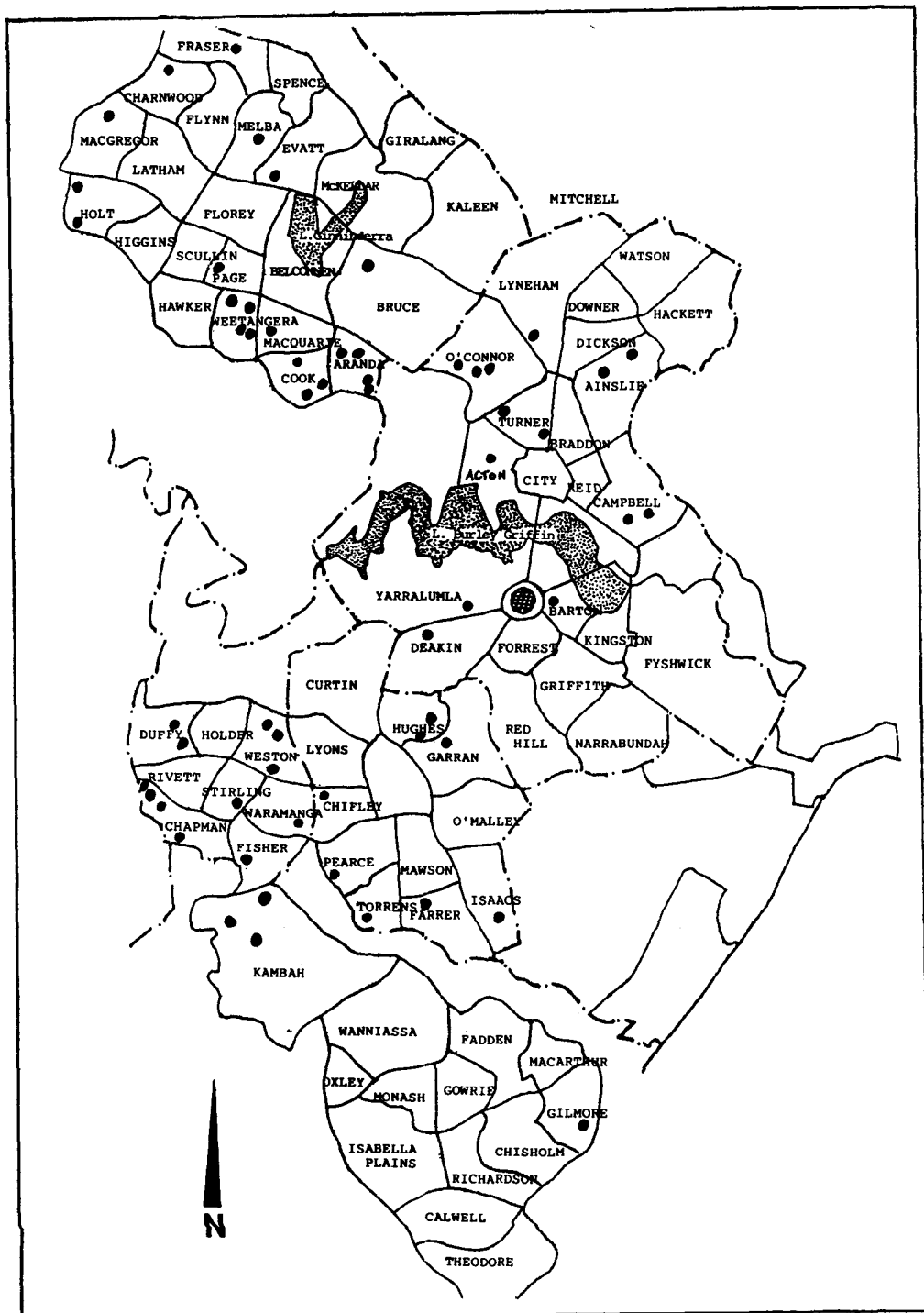


Figure 5. Location of the Garden Bird Survey sites.

Histograms have been placed beside the text of selected species. These indicate the average number of individuals recorded in each GBS site per month. The greatest monthly A value has been used to determine the vertical scale of each histogram. Therefore, when comparing histograms values for different years and/or species, allowance should be made for differences in this scale.

Table 1. Values of A, F, W, R, and G for the species recorded in the Garden Bird Survey together with the percentage change in these values when compared with the 1989-90 data (dA, dF, dW, dR). The species are sorted in descending order, using the A statistic, giving a list with the most abundant species appearing first.

Species Name	A	dA%	F	dF%	W	dW%	R	dR%	G
Common Starling	11.0973	26	98.31	2	52	0	81.44	8	13.63
House Sparrow	6.6556	-6	96.61	0	52	0	76.03	5	8.75
Silvereye	6.2488	15	96.61	2	52	0	72.37	6	8.63
Galah	5.7122	11	100.00	2	52	0	79.52	13	7.18
Pied Currawong	4.5911	10	100.00	0	52	0	82.59	2	5.56
Sulphur-crested Cockatoo	4.2385	18	98.31	2	52	0	66.54	8	6.37
Crimson Rosella	3.0069	3	98.31	-2	52	0	83.95	4	3.58
Common Myna	2.7915	62	54.24	3	52	0	39.00	17	7.16
Australian Magpie	2.6351	-6	100.00	0	52	0	86.49	4	3.05
Yellow-faced Honeyeater	2.2036	18	93.22	2	52	0	33.70	9	6.54
Blackbird	2.1092	15	96.61	2	52	0	79.93	8	2.64
Red Wattlebird	2.0238	5	98.31	3	52	0	78.00	2	2.59
Australian Magpie-lark	2.0000	13	100.00	0	52	0	78.90	14	2.53
Yellow-rumped Thornbill	1.6827	4	91.53	0	52	0	39.45	-2	4.27
Eastern Rosella	1.6346	15	94.92	-5	52	0	62.07	12	2.63
Australian King-Parrot	1.3888	2	77.97	8	52	0	31.44	11	4.42
S i l v e r G u l l	1.1104	81	8.47	29	17	6	0.99	39	112.71
Australian Raven	0.9553	22	98.31	7	52	0	46.80	15	2.04
Feral Pigeon	0.8288	42	52.54	-3	52	0	12.23	2	6.78
Eastern Spinebill	0.7906	40	89.83	3	52	0	44.95	34	1.76
Noisy Friarbird	0.7615	-12	89.83	-8	37	-23	35.51	-8	2.14
Superb Fairy-wren	0.7323	-2	72.88	3	52	0	23.56	-4	3.11
Black-faced Cuckoo-shrike	0.7258	6	96.61	2	52	0	44.25	12	1.64
Striated Pardalote	0.7069	23	81.36	15	52	0	37.19	34	1.90
White-naped Honeyeater	0.5365	45	62.71	1	32	-11	8.74	41	6.14
Gang-gang Cockatoo	0.5160	1	74.58	1	52	0	20.48	20	2.52
Weebill	0.5037	-26	59.32	1	52	0	21.14	-13	2.38
Spotted Pardalote	0.4915	8	84.75	8	52	0	29.52	-1	1.42
Red-browed Firetail	0.4803	103	33.90	9	43	0	5.67	27	8.48
Red-rumped Parrot	0.4692	32	37.29	14	52	0	9.98	38	4.70
Laughing Kookaburra	0.4421	17	88.14	25	52	0	24.34	18	1.82
Grey Fantail	0.3974	-7	88.14	5	52	0	25.86	-4	1.54
Willie Wagtail	0.3888	11	94.92	9	52	0	28.61	13	1.36
Brown Thornbill	0.3021	2	47.46	16	52	0	15.72	9	1.92
European Goldfinch	0.2989	-16	61.02	-2	49	-6	10.59	-6	2.82
Welcome Swallow	0.2890	8	47.46	7	51	4	7.39	1	3.91
White-winged Chough	0.2861	54	32.20	9	45	5	4.35	53	6.58
Striated Thornbill	0.2430	52	45.76	3	52	2	8.46	51	2.87
Golden Whistler	0.2028	39	69.49	32	43	2	15.23	30	1.33
Noisy Miner	0.1761	53	16.95	-26	52	6	5.75	55	3.06
Straw-necked Ibis	0.1654	41	15.25	210	12	0	1.15	135	14.39
Rufous Whistler	0.1609	10	64.41	-7	52	0	12.07	5	1.33
White-plumed Honeyeater	0.1502	69	50.85	7	48	14	6.69	36	2.25
Buff-rumped Thornbill	0.1388	84	16.95	3	44	13	3.28	29	4.23
Fuscous Honeyeater	0.1236	29	44.07	17	27	0	6.08	21	2.03
Little Raven	0.1207	207	11.86	-20	10	-28	0.49	-18	24.50
White-throated Needletail	0.1190	-22	23.73	-31	12	0	1.11	-24	10.74
White-eared Honeyeater	0.1149	54	62.71	16	31	7	9.85	58	1.17
Masked Lapwing	0.1039	75	40.68	8	50	0	6.32	31	1.64

Species Name	A	dA%	F	dF%	W	dW%	R	dR%	G
Varied Sittella	0.0989	95	11.86	81	33	57	1.72	100	5.74
Dusky Woodswallow	0.0924	213	16.95	-6	21	17	1.03	26	9.00
Dollarbird	0.0915	2	44.07	3	22	-15	5.17	-11	1.77
Crescent Honeyeater	0.0874	53	18.64	-24	31	24	5.46	48	1.60
Grey Shrike-thrush	0.0846	21	45.76	40	49	2	7.96	27	1.06
Olive-backed Oriole	0.0710	37	44.07	22	34	-6	6.28	42	1.13
Scarlet Robin	0.0698	4	49.15	11	31	3	5.01	19	1.39
Satin Bowerbird	0.0665	-8	15.25	3	34	-8	2.83	-1	2.35
White-throated Treecreeper	0.0620	24	16.95	-14	44	-8	5.46	29	1.14
White-browed Scrubwren	0.0599	-45	22.03	-4	44	-14	3.65	-40	1.64
Double-banded Finch	0.0587	-1	13.56	-36	31	15	1.60	5	3.67
Grey Currawong	0.0534	-15	42.37	44	51	4	4.52	-14	1.18
Crested Pigeon	0.0493	206	6.78	-59	49	69	2.96	141	1.67
Leaden Flycatcher	0.0427	64	23.73	3	23	15	2.79	41	1.53
Maned Duck	0.0427	-61	18.64	-12	24	-33	1.68	-23	2.54
Tawny Frogmouth	0.0419	23	5.08	-38	39	0	1.89	17	2.22
Speckled Warbler	0.0406	3	3.39	4	43	-9	1.77	-1	2.30
Southern Boobook	0.0382	-20	28.81	-16	36	-22	3.74	-6	1.02
Australian Hobby	0.0316	6	45.76	27	32	-27	2.59	2	1.22
Little Corella	0.0312	179	11.86	261	27	125	1.35	200	2.30
New Holland Honeyeater	0.0308	68	11.86	21	23	21	1.35	57	2.27
Cattle Egret	0.0267	622	1.69	3	5	150	0.21	200	13.00
Mistletoebird	0.0242	27	13.56	3	24	-11	1.97	20	1.23
Tree Martin	0.0230	-75	8.47	3	13	20	0.66	61	3.50
Black-shouldered Kite	0.0201	-10	18.64	3	30	-9	1.85	-5	1.09
Pallid Cuckoo	0.0189	-43	22.03	-33	18	-22	1.85	-36	1.02
Rose Robin	0.0172	35	16.95	-6	20	-9	1.48	37	1.17
White-throated Gerygone	0.0160	-14	22.03	-21	20	-23	1.48	-21	1.08
Sacred Ibis	0.0156	-75	1.69	-66	5	-64	0.21	-70	7.60
Sacred Kingfisher	0.0152	16	23.73	11	21	24	1.44	29	1.06
Flame Robin	0.0152	2	11.86	21	16	-11	0.99	10	1.54
Rainbow Lorikeet	0.0144	-20	6.78	-3	19	-10	0.94	15	1.52
Brown-headed Honeyeater	0.0144	-61	5.08	-38	9	-65	0.41	-67	3.50
Fan-tailed Cuckoo	0.0140	-34	18.64	-13	21	-32	1.40	-28	1.00
Rainbow Bee-eater	0.0140	637	6.78	38	2	0	0.16	45	8.50
Restless Flycatcher	0.0127	274	18.64	127	23	283	1.11	327	1.15
Australian Kestrel	0.0099	-54	16.95	-35	18	-100	0.94	-49	1.04
Yellow Thornbill	0.0099	90	11.86	81	12	140	0.57	159	1.71
White-faced Heron	0.0090	-50	15.25	33	14	-39	0.86	-15	1.05
Horsfield's Bronze-Cuckoo	0.0090	-3	11.86	-10	12	-25	0.82	-9	1.10
White-winged Triller	0.0090	41	3.39	3	12	-8	0.57	-10	1.57
Collared Sparrowhawk	0.0074	10	18.64	26	13	-7	0.74	16	1.00
Brown Falcon	0.0066	27	11.86	141	13	30	0.57	54	1.14
Brown Goshawk	0.0053	-72	13.56	-54	9	-70	0.53	-71	1.00
Shining Bronze-Cuckoo	0.0053	-65	8.47	-53	9	-64	0.49	-68	1.08
Eastern Yellow Robin	0.0053	56	1.69	-74	13	63	0.53	17	1.00
Little Eagle	0.0049	-43	13.56	107	11	-21	0.49	-13	1.00
Wedge-tailed Eagle	0.0041	-27	8.47	-26	6	-40	0.33	-20	1.25
Western Gerygone	0.0041	-69	5.08	-61	10	-52	0.41	-63	1.00
Peregrine Falcon	0.0037	42	11.86	81	8	60	0.33	74	1.25
Common Bronzewing	0.0037	-65	3.39	-48	9	-61	0.37	-60	1.00
Great Cormorant	0.0037	-53	1.69	3	2	-67	0.08	-64	4.50
Rufous Fantail	0.0033	-37	10.17	-38	3	-67	0.29	-41	1.14
Pacific Black Duck	0.0033	2	5.08	210	4	-50	0.16	-47	2.00
Little Lorikeet	0.0029	NA	3.39	NA	1	NA	0.08	NA	3.50
Budgerigar	0.0025	32	8.47	72	6	20	0.25	32	1.00
Purple Swamphen	0.0025	NA	1.69	NA	2	NA	0.08	NA	3.00
Yellow-tailed Black-Cockatoo	0.0021	NA	3.39	NA	2	NA	0.08	NA	2.50
Common Koel	0.0016	-38	5.08	-23	4	-20	0.16	-16	1.00
Jacky Winter	0.0016	129	1.69	3	4	300	0.16	300	1.00
Brush Cuckoo	0.0012	71	5.08	55	3	50	0.12	71	1.00
Satin Flycatcher	0.0012	-68	5.08	-38	3	-40	0.12	-45	1.00
Richards Pipit	0.0012	NA	3.39	NA	3	NA	0.12	NP	1.00
White's Thrush	0.0012	NA	3.39	NA	3	NA	0.12	NA	1.00
Golden-headed Cisticola	0.0012	-88	1.69	-48	3	-86	0.12	-87	1.00
Australian Pelican	0.0008	-82	3.39	-31	1	-80	0.08	-58	1.00
Grey Butcherbird	0.0008	-91	3.39	-48	2	-87	0.08	-88	1.00
Great Egret	0.0004	0	1.69	0	1	0	0.04	0	1.00
Skylark	0.0004	0	1.69	0	1	0	0.04	0	1.00
Olive Whistler	0.0004	NA	1.69	NA	1	NA	0.04	NA	1.00

Waterbird Survey

As in previous years Waterbird Survey data were collected during monthly visits to Lake Bathurst and Lake George. Results shown for Lake Bathurst include records collected at The Morass.

For Canberra's urban lakes, this report contains records collected at Lake Tuggeranong. Surveys of Lake Burley Griffin and Lake Ginninderra finished at the end of June 1989. References in the report to Lake Tuggeranong include the silt-trap on Tuggeranong Creek, Village Dam on Village Creek, the water quality control pond at Point Hut and Isabella Pond.

Details of water levels, together with the number of waterbird species and the number of individuals counted on each lake are summarised in Table 2.

Table 2. Water levels, and number of waterbird species and individuals recorded, at Lake Bathurst (including the Morass), Lake George, and Lake Tuggeranong (including the silt-trap on Tuggeranong Creek, Village Dam on Village Creek, the water quality control pond at Point Hut, and Isabella Pond). In the tables of waterbird numbers which are underlined indicate that the lake was only partly surveyed and a dash (-) indicates that a survey was not undertaken in that month.

	Jul	Aug	Sep	Oct	Nov	Dec	Jan	Feb	Mar	Apr	May	Jun
a) Water levels (metres)												
LBath	2.48	3.23	3.39	3.48	3.43	3.24	3.01	2.88	2.72	2.59	2.53	2.50
Morass	3.29	3.70	3.46	3.51	3.41	3.24	3.03	2.89	2.74	2.63	2.55	2.54
LGeo	2.51	3.02	3.17	3.07	3.05	2.87	2.70	2.57	2.45	2.30	2.26	2.24
b) Number of waterbird species:												
LBth	20	22	2E	27	37	32	33	22	12	30	27	12
LGeo	21	6	21	23	25	29	31	31	17	28	27	21
LTug	-	11	-	10	-	16	-	25	-	20	-	169
c) Number of waterbird individuals:												
LBth	5669	2262	3086	4965	4931	10745	19772		8194	6646	9154	7944
	1785											
LGeo	967	353	1422	2134	2027	5841	6556	6455	3190	7986	7659	2597
LTug	-	105	-	218	-	585	-	914	-	855	-	210

Miscellaneous Records

The "Miscellaneous" records category includes all observations from the Canberra region that were not collected specifically for the Waterbird or Garden Bird Surveys.

In addition to storing the records of specific surveys, the COG Database of Bird Observations includes numerous records collected by members and other interested enthusiasts during their bird watching activities. These records, submitted in over five hundred record sheets this year, form the bulk of the year's data and so represent an

important source for the information COG needs to pursue its objective of promoting the conservation of our native birds and their habitat. Effective conservation relies on accurate information regarding the numbers, breeding status, and habitat preferences of different species.

Acknowledgements

Philip Veerman compiled the data from the Garden Bird Survey. The Waterbird Survey data were made available by Michael Lenz and Jack Holland.

Contributors to the Highlights and to the Systematic List were Ian Baird, Grahame Clark, Chris Davey, Bob Digan, Malcolm Fyfe, Bill Graham, Michael Lenz, Brendan Lepschi, Bruce Lindenmayer, Ian McMahon and David Purchase.

The map of the Canberra region (Figure 1) and the diagram of the grid system (Figure 2) were supplied by Paul Sjöberg.

The table of water levels was produced from data supplied by the Australian Geological Survey Organisation, Canberra. Rainfall and temperature graphs were prepared from data supplied by the Canberra Meteorological Office.

The histograms were prepared by Michael Stanger.

References

- Canberra Ornithologists Group. (1985). A Field List of the Birds of Canberra and District (3rd edition). Canberra Ornithologists Group: Canberra
- Canberra Ornithologists Group. (1992). Annual Bird Report: 1 July 1989 to June 1990. *Canberra Bird Notes* 17: 17-71.
- Hermes, N. (1981). Garden Bird Chart and Survey. *Canberra Bird Notes* 6: 112-114.
- Schodde, R., Glover, B., Kinsky, F.C., Marchant, S., McGill, A.R., and Parker, S.A. (1978). Recommended English names for Australian birds. *Emu* 77: 245-307.
- Taylor, I. (1987). Breeding data from suburban gardens, Canberra, 1981 to 1984. *Canberra Bird Notes* 12: 8-13.
- Taylor, M. and Canberra Ornithologists Group (1992). Birds of the Australian Capital Territory - An Atlas. Canberra Ornithologists Group and National Capital Planning Authority: Canberra.

APPENDIX 1. Explanatory Notes, Statistical Methods, Abbreviations, and Observer Codes

a) Explanatory Notes

The names and sequence of birds in the Systematic List conform to the RAOU's "Recommended English Names for Australian Birds" (Schodde et al. 1978).

Following completion of the 1986-89 "Atlas" survey of the ACT (Taylor and Canberra Ornithologists Group 1992) the status of the birds of the region as a whole is being reconsidered. The status shown for each species in this report takes account of the Atlas survey results and of other data currently available.

The status of each species has been given in a coded form and consists of two elements, abundance and breeding/presence, the abbreviations for each element being separated by a period (e.g. C.BR). The abbreviations are defined in section *c*) of this appendix.

As applicable, information relating to each species is in the sequence: Garden Bird Survey (GBS). Waterbird Survey (WBS) and miscellaneous records (Misc).

As a general rule records are set out in the following format: number of individuals/date. place. grid (observer). For example, "3/6 Oct "Kirawin" Hs GrE8 (FuB)", indicates 3 birds on 6 October at "Kirawin" Homestead Grid cell E8 and the observer was Billy Fuster. Breeding records are indicated by an "ne" (nest with eggs) or "dy" (dependent young), or other abbreviation as appropriate, which take the place of the number of individuals. For breeding records of cuckoos. the host species. if recorded, is shown in brackets immediately following the breeding indicator e.g. dy (Buff-rumped Thornbill)/12 Dec.

The words "record(s)" and "observation(s)" are not used to indicate the number of birds involved. Where available and appropriate the number of individuals has been included.

In cases where the observer has been unable to make an accurate count of the birds present the following abundance codes may have been used to indicate estimated numbers - A = 1 to 5 birds, B = 6 to 20, C = 21 to 50, D = 51 to 100. E = 100 plus, and X = present but no estimate made of numbers.

Numbers and distribution of birds are sometimes compared with the previous year. Therefore. unless indicated otherwise, a statement in this report such as "overall numbers lower" should be taken to mean lower than in 1989-90.

Garden Bird Survey data are often in the form "2wk May", "2wk" referring to the second week of the month. The dates of each week are shown at the top of the survey chart and also listed by Taylor (1987).

When sufficient data are available, breeding records giving the first and last nest and/or dependent young records have been included.

In the tables of waterbird numbers included in the Systematic List: numbers which are underlined indicate that the lake was only partly surveyed; figures in **bold italics** indicate breeding (if non-flying young are present their numbers are not included in the totals); and a dash (-) indicates that a survey was not undertaken in that month.

b) Garden Bird Survey Statistics

The following variables are shown for those species recorded often enough to warrant their inclusion and are summarised for all species in Table 1:

- A - a measure of abundance. This is the average number of individuals of a species recorded at a site for each week over the full year. It is obtained by adding all weekly observations of a species and dividing the sum by the total number of weeks during which observations were made (2436 this year). If $A=5.1$ then on average, 5.1 individuals of that species were recorded each week, at each site, over the full year.
- F - a measure of distribution. This the number of sites at which a species was recorded at least once expressed as a percentage of the total number of sites (59 sites this year). If $F=27.1\%$ then a species has been recorded, at least once, at 16 sites (i.e. 27.1 per cent of the 59 sites).
- W - the number of weeks in the year for which a species has been recorded at any site. A resident species such as the Australian Magpie-lark is present throughout the year ($W=52$ weeks); whereas a migrant such as the Olive-backed Oriole was only present for 34 weeks (i.e. $W=34$).
- R - a measure of the recording rate. This is the number of observer-weeks during which a species was recorded, expressed as a percentage of the total number of observer-weeks for the year (2436). For example, the Australian Magpie was recorded during 2107, thus $R=86.5\%$.
- G - the average number of individuals of a species recorded in each observation. For example, the calculated G value for the Silver Gull is 112.7 which indicates it is usually observed in large flocks.

In Table 1 "NA" in the columns listing percentage changes in the above values (e.g. dA%). indicates that there were no records for that species in the previous year (1989-90) for comparison.

c) Abbreviations

The following abbreviations include those used in previous editions of the Annual Bird Report. They have been added to and modified to facilitate their use both in this report and the COG Database of Bird Observations.

General

ad ... adult
ANBG .. Australian National Botanic Gardens
ANU .. Australian National University, Acton
CBN .. *Canberra Bird Notes*
cf ... carrying food
Ck ... creek
CSIRO . Commonwealth Scientific and Industrial Research
 Organisation. The abbreviation will be followed by
 the precise location, e.g. CSIRO "Gungahlin"
dy ... dependent young
E East
 female
GBS .. Garden Bird Survey
Gr ... COG grid cell (number)
Hs Homestead
ih ... in hollow (or hole)
imm .. immature
juv .. juvenile
km ... kilometre
LBth . Lake Bathurst
LBG .. Lake Burley Griffin
LGeo . Lake George
LGIN . Lake Ginninderra
LTug . Lake Tuggeranong
m male
max ... maximum
Misc . miscellaneous (records)
Mt/Mtn .. Mount/Mountain
N North
 nest
nb nest building
ne ... nest with eggs
nr near
NR ... Nature Reserve
ny nest with young

on bird on or observed leaving nest
Pk Park
R River
Ra Range
Rd/rd... Road
S South
S **SF**State Forest
UNIC ... University of Canberra, Bruce
unsp ... unspecified
W West
W **WBS**Waterbird Survey
wk week
Status

Abundance

C Common
R Rare
U Uncommon

Breeding/Presence

B Breeding
M Migrant
R Resident
Va ... Vagrant
Vi Visitor

d) *Observer Codes*

Observers are identified by codes which have been developed for use in both the Annual Bird Report and the COG Database of Bird Observations. These codes are made up of three letters from the names of the persons or organisations concerned, plus one number. The complete code will be used when entering data into the database. In this report the numeral will be dropped except in cases where two observers have the same alpha code.

AIB Allan, Barbara
AJP Allan, Joan & Paul
AIR Allen, Richard
AnB Anderson, Bernice
APC ACT Parks & Conservation
 Service
BaG Barwell, G
Bal Baird, Ian

BaJ Barr, Joe
BBG Browning, Betty & Graham
BeR Bennett, Ross
BiJ Bissett, John
BIJ Black, J
BoJ Bounds, Jenny
BrG Browning, Graham
BrM Brookfield, Muriel

ChS Chittick, Shirley
CIG1 Clark, Grahame
 CIM Clayton, Mark
CIS Cleland, Sylvia
CIG2 Clifton. Graeme
CoD Cowley. Del
CrI Crawford. Isobel
CrJ Crawford. Jean
DaB Daly, Barbara
DaC Davey, Chris
DCM Dow, Coral & Murray
DiB Digan. Bob
DoM Doyle, Mike
DrD Driscoll, Don
DuG Duggan. Geoff
EGR Elliott, Grahame & Robyn
EIR Elliott, R
FiB FitzGerald, Bryan
FyM Fyfe, Malcolm
GJN Gascoigne, John & Nathalie
GIJ Gleeson, John
GrB Graham, Bill
HAI Holland, Andrea & Jack
HaK Hahne, Kay
HoA Howarth. Ann
HoJ Holland. Jack
JoD Johnson. Delia
KrS Kral. Shirley
LaD Landon, David
LaM Larkin. Matthew
LeB Lepschi. Brendan
LeM Lenz, Michael
LiB Lindenmayer, Bruce
LiM Lintermans, Mark
LuN Luff, Noel
MaD Magrath, David

MaK Mallett. Katy
McD McDonald, David
McI McMahon, Ian
McJ Mellroy, J
McR McKay. R
MeR Metcalf, Rosemary
MiJ Milner. Joan
MiP Milburn, Peter
MoM Moncur, Mike
MoR Morphett. Rod
MuS Mugford. Stephen
NiA Nicholls. Nick
NiJ Nicholls, J
OrP Ormay, Peter
PeJ Pennhallurick, John
PfD Pfanner. David
PoH Possingham, Hugh
PrJ Price, Joan
PuD Purchase. David
RoC Rowell, Cecily
RoM Rowe, Michael
SMM Sexton. M&M
SmM Smith, Maureen
StG Stephinson, Graham
TaM Taylor. McComas
ThR Thomas. Richard
TuE Tulip, Ellen
vGH van Gelder. H
VeP Veerman. Philip
WaJ Walker, J
WAH Wright. Alan & Hazel
WeS Webb. Sue
WiS Wilson. Steve
WoD Wood. Don
WrH Wright, Hazel

APPENDIX 2. Systematic List

GREBES

Great Crested Grebe *Podiceps cristatus* U.BR

WBS: This year has seen an increase after many years of small numbers, including the first records from LGeo since May 1980; 65 at LBth in Dec is the largest number recorded at any site since Aug 1979 when 67 were reported from LGeo:

	Jul	Aug	Sep	Oct	Nov	Dec	Jan	Feb	Mar	Apr	May	Jun
LBth	0	0	9	21	32	65	30	3	13	1	7	3
LGeo	0	0	2	0	0	1	8	18	0	0	2	0

Misc: 2 non-breeding records: A/16 Nov CSIRO Ginninderra GrJ11 (Gil), 1/2 Jun Mulligans Flat GrL10 (BoJ); there were no Misc records last year.

Hoary-headed Grebe *Poliiocephalus poliocephalus* C.BR

WBS: Numbers reported from LBth in Dec and Jan are the largest since surveys began there in 1980 (the previous largest was 2048 in Dec 1981); as in previous years, the largest numbers were reported in summer and autumn; numbers reported from LGeo are smaller than last year:

	Jul	Aug	Sep	Oct	Nov	Dec	Jan	Feb	Mar	Apr	May	Jun
LBth	61	14	63	36	441	2051	2913	1231	1096	871	602	179
LGeo	15	0	17	7	17	96	180	200	260	103	33	11

Misc: 21 non-breeding records: most were of <50 individuals, but larger numbers (51-100) in Dec, Apr, May from Yellangalo GrL3 and Lake Yellangalo GrL3 (NiA, RoM). 1 breeding record: dy/18 Jan between LGeo and Bungendore road GrQ11 (FyM).

Australasian Grebe *Tachybaptus novaehollandiae* C.BR

WBS: Numbers have declined slightly from those of the previous two years:

	Jul	Aug	Sep	Oct	Nov	Dec	Jan	Feb	Mar	Apr	May	Jun
LTug	-	0	-	0	-	0	-	0	-	1	-	0
LBth	7	7	4	0	2	4	8	0	1	6	0	0
LGeo	0	0	7	8	8	10	22	64	0	0	0	0

Misc: 41 non-breeding records; most were <20 individuals. but larger numbers (21-100) in Apr, May from Lake Yellangalo GrL3 (RoM). 4 breeding records: ne/10 Oct by road to Yass R GrJ6 (LeB), ne/18 Nov Jerrawa Ck GrM3 (NiA), dy/21 Nov S of Wm Hovel Drive GrL13 (FyM), dy/18 Jan Farm dam between LGeo and Bungendore rd GrQ11 (FyM).

PELICAN, DARTER & CORMORANTS

Australian Pelican *Pelecanus conspicillatus* C.Vi

GBS: 2 records of birds flying overhead: 1/2wk Jul Aranda GrJ13 (WeS), 1/2wk Jul Aranda GrJ13 (MaD).

WBS: Although numbers remain low generally. 137 at LGeo in Feb is the largest since Jan 1981:

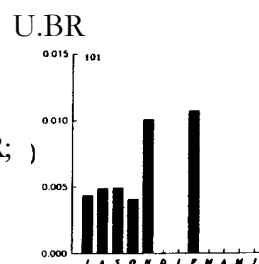
	Jul	Aug	Sep	Oct	Nov	Dec	Jan	Feb	Mar	Apr	May	Jun
LBth	0	0	0	1	8	1	1	0	2	0	0	0
LGeo	6	0	29	83	1	18	46'	137	17	4	6	55

Misc: 8 non-breeding records: 3 from Jerrabomberra Wetlands GrL14 in Sep, Oct, Nov (largest 8/1 Sep (PoH)); and 5 from LGeo in Oct, Nov, Jun (largest 30/11 Nov (WrH)).

Darter *Anhinga melanogaster*

WBS: 1/25 Nov Morass GrZ8 (DoM), 1/5 Jan LGeo GrR6 (LeM), 1/28 Jan LGeo GrR11 (LeM).

Misc: 12 non-breeding records: 11 flout LBG or vicinity in Jul, Aug, Sep, Oct, Jun (largest 5/2 Sep Yarramundi Bay GrJ14 (BeR;) and 5/13 Oct Kelly's Swamp GrL14 (Pfd)); and 1/18 Jan Farm dam between LGeo and Bungendore rd GrQ11 (FyM).



Great Cormorant *Phalacrocorax carbo*

C.BR

WBS: Numbers at LGeo have increased since previous year:

	Jul	Aug	Sep	Oct	Nov	Dec	Jan	Feb	Mar	Apr	May	Jun
LTug	-	1	-	3	-	4	-	12	-	0	-	0
LBth	2	0	2	0	7	10	9	0	0	0	16	0
LGeo	0	2	55	12	4	12	9	0	0	0	8	12

Misc: 18 non-breeding records from most months: largest 8/28 Oct Fyshwick Sewage Ponds GrL14 (PoH).

Little Black Cormorant *Phalacrocorax sulcirostris* C.BR

WBS: Numbers at LTug the smallest since 1987-88, when none were reported; numbers at LBth and LGeo were generally larger than previous years and in May were the largest recorded since surveys began at these sites in 1979-80:

	Jul	Aug	Sep	Oct	Nov	Dec	Jan	Feb	Mar	Apr	May	Jun
LTug	-	1	-	4	-	0	-	0	-	0	-	0
LBth	0	3	0	0	17	4	2	0	1	0	88	0
LGeo	0	0	7	0	0	0	0	1	7	0	49	0

Misc: 25 non-breeding records flout most months: largest 14/2 Mar Kelly's Swamp GrL14 (McI). 12/28 Oct Jerrabomberra Wetlands GrL14 (PoH), 12/3 Feb Kelly's Swamp GrL14 (McI). 1 breeding record: ny/19 Feb Wollogorang Lagoon GrU3 (FyM).

Little Pied Cormorant *Phalacrocorax melanoleucos* C.BR

WBS: Numbers and seasonal distribution *similar* to last year for LGeo and LBth, but fewer recorded at LTug:

	Jul	Aug	Sep	Oct	Nov	Dec	Jan	Feb	Mar	Apr	May	Jun
LTug	-	0	-	0	-	0	-	0	-	1	-	0
LBth	2	1	4	5	6	30	40	61	147	88	7	2
LGeo	15	13	4	32	14	33	12	26	94	4	3	0

Misc: 47 non-breeding records from all months: largest D/19 Feb Wollogorang Lagoon GrU3 (FyM), 30/18 Jan Farm dam between LGeo and Bungendore rd GrQ11 (FyM). 20/9 Mar Kelly's Swamp GrL14 (LiB). 1 breeding record; dy/18 Jan Farm dam GrQ11 (FyM).

HERONS, EGRETS & BITTERNs

Pacific Heron *Ardea pacifica*

U.Vi

WBS: Compared with last year numbers have increased slightly at LGeo and decreased at LBth; none were recorded at LTug:

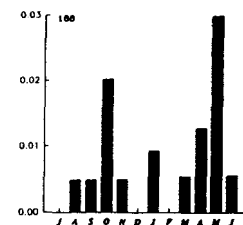
	Jul	Aug	Sep	Oct	Nov	Dec	Jan	Feb	Mar	Apr	May	Jun
LBth	0	0	0	0	1	0	0	0	0	0	0	0
LGeo	0	0	0	0	0	8	16	1	0	0	0	0

Misc 17 non-breeding records in Nov, Dec, Jan, Feb, Mar, and May, largest 20/28 Jan swamp near Breadalbane GrT2 (LuN).

White-faced Heron *Ardea novaehollandiae*

GBS: Mostly single individuals reported from nine gardens. **WBS:** Fewer reported from LTug and LBth than previous year, but numbers at LGeo continue to increase; as in previous years, the largest numbers were reported in summer and early autumn:

C.BR



	Jul	Aug	Sep	Oct	Nov	Dec	Jan	Feb	Mar	Apr	May	Jun
LTug	-	2	-	1	-	3	-	4	-	7	-	2
LBth	5	4	1	4	16	8	9	6	18	19	0	0
LGeo	18	0	9	23	62	157	128	266	173	33	4	16

Misc: 74 non-breeding records from 42 grid cells in all months: largest 30/19 Feb Wollogorang Lagoon GrU3 (FyM). 18/20 Jan Lake Rd GrR12 (WrH), 11/24 Jun Melba District playing fields GrJ12 (PuD). 1 breeding record ny/24 Dec Wanna Wanna GrO15 (CIG2).

Cattle Egret *Ardeola ibis*

U.Vi

GBS: 5 records: all from Holt GrI12 (EGR). 4/3wk Sep. 20/4wk Sep. 19/1wk Oct. 18/3wk Oct, 4/2wk Apr.

WBS: Fewer records than last year but 34 the largest number since 1988: 34/25 Sep LGeo GrR11 (LeM), 12/25 Nov LGeo GrR11 (LeM), 1/21 Apr LTug GrJ16 (Bij).

Misc: 18 non-breeding records: 8 from Melba District playing fields of up to 14 egrets feeding there during the winter from 17 May. often in the company of White-faced Herons. GrJ12 (FyM, PuD); largest 36/1 Sep Kelly's Swamp GrL14 (PoH).

Great Egret *Egretta alba*

U.Vi

GBS: 1 record: 1/1wk Mar Holt GrI12 (EGR).

WBS: Number of records slightly down from last year. but still larger than usual, 12 (LGeo in Jan & Feb) is largest number of individuals reported since surveys began:

	Jul	Aug	Sep	Oct	Nov	Dec	Jan	Feb	Mar	Apr	May	Jun
LBth	0	0	0	0	1	0	0	0	0	0	0	0
LGeo	0	0	0	2	1	4	12	12	1	0	0	0

Misc: 6 non-breeding records: largest 7/19 Feb Wollogorang Lagoon GrU3 (FyM).

Intermediate Egret *Egretta intermedia*

R.Vi

WBS: Unusually large numbers at LGeo: 5/24 Jul LGeo S GrR11, 8/5 Jan LGeo N GrR6, 8/28 Jan LGeo N GrR6 (all LeM), 1/23 Feb LGeo N GrR6 (WAH).

Rufous Night Heron *Nycticorax caledonicus*

U.Vi

Misc: 2/13 Jan "Uriarra" Hs GrF13 (LiB). 3/11 Feb Jerrabomberra Wetlands GrL14 (LiB), 5/19 Feb Wollogorang GrU3 (FyM). 2/2 Mar Kelly's Swamp GrL14 (McI).

Little Bittern *Ixobrychus minutus*

R.Vi

Misc: First observation since 1988. 1/14 Dec Acacia Inlet GrK13 (DuG).

STORK, IBISES AND SPOONBILLS

Glossy Ibis *Plegadis falcinellus*

R.Vi

WBS: 2/23 Feb LGeo GrR6 (LeM).

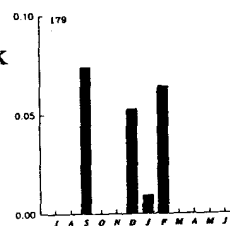
Misc: 1/16 Dec Ballalaba. Shoalhaven R GrX21 (CIG1). 1/12-14 Jan Kelly's Swamp GrL14 (ThR).

Sacred Ibis *Threskiornis aethiopica*

C.BR

GBS: 5 records: all from Holt Gr12 (EGR), 15/3wk Sep, 9/3wk Dec, 2/1wk Jan. 2/1wk Feb. 10/4 wk Feb.

WBS: Larger numbers than usual at LBth and LGeo, but unlike previous year. when it occurred in autumn, peak at LGeo was in spring, 202 is largest yet recorded at LGeo:



	Jul	Aug	Sep	Oct	Nov	Dec	Jan	Feb	Mar	Apr	May	Jun
LBth	0	0	1	2	8	8	29	2	0	26	14	0
LGeo	26	0	202	10	26	6	27	43	0	0	0	0

Misc: 33 non-breeding records from 24 grid cells in all months except September (but see WBS where 282 from LGeo): 300/17 Nov Belconnen tip GrH12 (FyM) is the largest number yet recorded from our area.

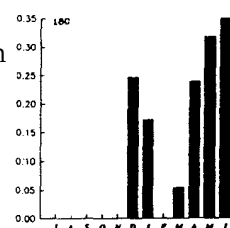
Straw-necked **Ibis** *Threskiornis spinicollis*

C. Vi

GBS: 28 records from Gilmore 1 (GrB). Kambah 2 (VeP.WiS), Weston 10 (LeB. WAH), Stirling 7 (JoD). Duffy 5 (SMM). Garran 2 (AIR). Holt 1 (EGR): records in Dec 1, Jan 1, Mar 1, Apr 5.

May 10. Jun 10, numbers varied from 1 to 42.

WBS: Numbers lower than last year unlike last year, when it occurred in autumn, peak at LGeo was in spring/summer:



	Jul	Aug	Sep	Oct	Nov	Dec	Jan	Feb	Mar	Apr	May	Jun
LBth	0	0	0	0	5	11	1	0	0	2	0	0
LGeo	0	0	34	55	9	25	78	23	0	2	1	0

Misc: 23 non-breeding records from 18 grid cells in all months except Jul. Aug. Sep: largest numbers 30/18 Nov Collector to Gunning rd GrR5 (WrH), 40/24 Jan 5 km S Gunning GrN2 (FyM), 40/24 Jan 3 km N Gundaroo GrO7 (FyM), 40/20 Apr Stirling playing fields GrI15 (JoD).

Royal Spoonbill *Platalea regia*

U.Vi

WBS: The numbers at LGeo and LBth remain large following last year's increase in numbers:

	Jul	Aug	Sep	Oct	Nov	Dec	Jan	Feb	Mar	Apr	May	Jun
LBth	0	0	0	0	2	0	0	8	1	6	0	0
LGeo	4	0	0	6	8	38	24	45	0	2	6	5

Misc: 10 non-breeding records. compared with one last year. most reflect the large numbers at LGeo: B/28 Oct LGeo GrR10 (LeB), A/28 Oct LGeo GrR11 (LeB), 10/11 Nov LGeo-Federal H'way GrR9 (WrH). 16/11 Nov LGeo S GrR11 (WrH). 2/20 Jan

Lake Rd GrR12 (WrH). 7/18 Jan Fain dam between LGeo and Bungendore mad GrQ11 (FyM). 3/3 Feb Kelly's Swamp GrL14 (McI), 2/2 Mar Kelly's Swamp GrL14 (McI). 1/1 May Kelly's Swamp GrL14 (FyM). 7/19 Feb Wollgorang Lagoon GrU3 (FyM).

Yellow-billed Spoonbill *Platalea flavipes* U.Vi

WBS: As in previous year, numbers remain fairly large:

	Jul	Aug	Sep	Oct	Nov	Dec	Jan	Feb	Mar	Apr	May	Jun
LBth	0	0	0	0	1	0	0	1	6	10	11	0
LGeo	10	0	0	11	1	2	2	34	0	2	24	34

Misc: 4 non-breeding records: 1/20 Jan LGeo S GrR11 (WrH). 1/24 Jan 3km N Gundaroo GrO7 (FyM), 1/16 Mar Dam junction Sutton Rd & Fairbairn Ave GrN14 (Wa), 16/23 Mar LGeo GrR11 (DiB).

SWAN & DUCKS

Black Swan *Cygnus atratus* C.BR

WBS: LTug - A single record 3/16 Dec GrJ16 (ChS). LBth - Present throughout the year with a build-up in numbers over the summer, max Jan. Birds on eggs Aug and Sep. LGeo - Similar numbers all year. Birds on nest Jul and Sep.

	Jul	Aug	Sep	Oct	Nov	Dec	Jan	Feb	Mar	Apr	May	Jun
LBth	232	221	384	573	1102	985	1521	<u>215</u>	<u>153</u>	360	360	<u>138</u>
LGeo	401	163	685	670	590	697	630	551	120	488	572	357

Freckled Duck *Stictonetta naevosa* U.Vi

WBS: LBth: Present Jan to May, similar to last year but in greater numbers. LGeo: Very few seen.

	Jul	Aug	Sep	Oct	Nov	Dec	Jan	Feb	Mar	Apr	May	Jun
LBth	0	0	0	0	0	0	18	2	0	52	18	0
LGeo	0	0	0	0	0	0	3	0	0	2	0	0

Australian Shelduck *Tadorna tadornoides* C.BR

WBS: Present most months. Most common over summer with increase on LGeo Apr. May. No breeding observed.

	Jul	Aug	Sep	Oct	Nov	Dec	Jan	Feb	Mar	Apr	May	Jun
LBth	45	0	76	25	481	467	398	62	61	12	82	0
LGeo	47	0	56	80	247	264	147	96	15	422	249	13

Pacific Black Duck *Anas superciliosa*

C.BR

GBS: Four records from three sites - Evatt (LaM), Holt (EGR), Acton (PoH).
 WBS: LTug - Similar numbers throughout the year, dependent young seen in Dec.
 LBth, LGeo - increase from previous year with max over the summer months. No breeding records from either lake.

	Jul	Aug	Sep	Oct	Nov	Dec	Jan	Feb	Mar	Apr	May	Jun
LTug	-	36	-	18	-	19	-	21	-	38	-	16
LBth	14	27	36	81	261	291	343	144	137	174	129	2
LGeo	59	0	23	151	288	480	501	532	30	140	286	6

Grey Teal *Anas gibberifrons*

C.BR

WBS: LTug - Two observations, 2 birds in Aug (DuG) and 4 in Oct (Bi). LBth, LGeo - Build up in numbers over the summer months with birds remaining on LGeo but dispersing by May on LBth. Only breeding record of bird on nest on LGeo. No broods recorded- unusual.

	Jul	Aug	Sep	Oct	Nov	Dec	Jan	Feb	Mar	Apr	May	Jun
LBth	33	48	65	60	164	1901	2920	1423	1282	1156	563	12
LGeo	67	0	36	373	124	2265	2720	2715	825	2920	3875	321

Chestnut Teal *Anas castanea*

C.BR

WBS: LBth - In large numbers similar to last year, max Feb, Mar. LGeo - less than last year. No breeding observed on either lake.

	Jul	Aug	Sep	Oct	Nov	Dec	Jan	Feb	Mar	Apr	May	Jun
LBth	167	81	128	110	273	432	211	632	794	157	35	2
LGeo	8	8	11	38	20	14	39	16	0	38	47	34

Australasian Shoveler *Anas rhynchotis*

C.BVi

WBS: Usual increase in numbers over the summer and autumn, numbers less than last year.

	Jul	Aug	Sep	Oct	Nov	Dec	Jan	Feb	Mar	Apr	May	Jun
LBth	42	8	19	29	114	286	217	530	353	559	339	30
LGeo	25	0	1	83	56	125	122	74	0	209	204	3

Pink-eared Duck *Malacorhynchus membranaceus*

C.Vi

WBS: Rare or absent Jul to Oct, lower numbers than previous years.

	Jul	Aug	Sep	Oct	Nov	Dec	Jan	Feb	Mar	Apr	May	Jun
LBth	0	2	0	0	5	10	80	21	59	78	518	0
LGeo	0	0	0	0	4	49	245	122	40	315	274	0

Hardhead *Aythya australis*

U.BVi

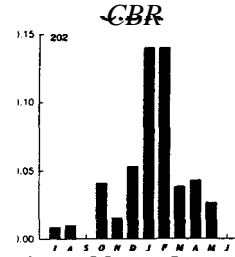
WBS: Absent or rare most months. LBth - max Mar.

	Jul	Aug	Sep	Oct	Nov	Dec	Jan	Feb	Mar	Apr	May	Jun
LBth.	0	2	2	0	6	22	18	1	<u>166</u>	61	21	1
LGeo	6	0	0	0	0	4	7	0	0	2	6	0

Maned Duck *Chenonetta jubata*

GBS: Overall less common than last year. present most months. A=0.043, F=18.64%, W=24, R=1.68%, G=2.54.

WBS: LTug - Numbers similar to last year. a single breeding observation of dependent young in Dec. LBth, LGeo - Numbers greater than last year. max Dec (LGeo) and Apr (LBth).



	Jul	Aug	Sep	Oct	Nov	Dec	Jan	Feb	Mar	Apr	May	Jun
LTug	-	12	-	26	-	240	-	118	-	274	-	2
LBth	2	2	3	4	41	111	327	262	182	458	79	0
LGeo	6	0	2	9	11	358	461	175	240	122	30	0

Blue-billed Duck *Oxyura australis*

R.BVi

WBS: Only LBth. Numbers down on last year but notable max in May. Unlike last year, no breeding records.

	Jul	Aug	Sep	Oct	Nov	Dec	Jan	Feb	Mar	Apr	May	Jun
LBth	0	0	3	2	13	8	9	4	29	54	90	0

Musk Duck *Biziura lobata*

U.BR

WBS: LBth - Large increase in numbers from last year, max Mar. No urban records.

	Jul	Aug	Sep	Oct	Nov	Dec	Jan	Feb	Mar	Apr	May	Jun
LBth	3	1	0	6	52	64	38	11	<u>109</u>	27	100	27
LGeo	0	0	0	0	0	0	1	1	0	0	0	0

KITES, HAWKS, EAGLES AND HARRIERS**Black-shouldered Kite** *Elanus notatus*

U.BR

GBS: The variable indicators show the previously recorded decline has halted and a modest increase has occurred. A=0.020, F=18.64%, W=30, R=1.85%, G=1.09.

WBS: One record - 2 /16 Dec Tuggeranong main lake Grj16 (Bij).

Misc: 26 records of 30 birds. No breeding records.**Black Kite** *Milvus migrans*

R.Va

WBS: 1/27 Dec LBath GrY8 (LeM)

Whistling Kite *Haliastur sphenurus*

U.BR

WBS: 7 records, 6 of these at LGeo, 1 at LBath.

Misc: 1/1 Sep Uriarra Crossing GrG12 (BiJ). 1/9 Sep Mt Mugga Mugga GrK15 (FyM). 2/30 Sep nr Uriarra Crossing GrG12 (BiJ). 1/9 Dec Molonglo Gorge GrO15 (CIG1), 1/6 Jan Mt Ainslie (LeM). 1/12 May LGeo S GrR11 (VeP).

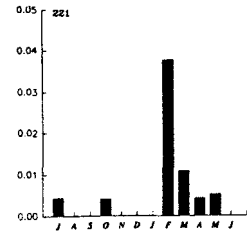
Brown Goshawk *Accipiter fasciatus*

U.BM

GBS: There has been a decline noted since 1987-88 in urban ACT. None of the measurements show an increase. A=0.005, F=13.56%. W=9, R=0.53%. G=1.00.

WBS: 1 record - 1/28 Jan LGeo GrR6 (LeM).

Misc: 31 records of 43 birds. Interestingly 11 records are associated with water. 2 breeding records.



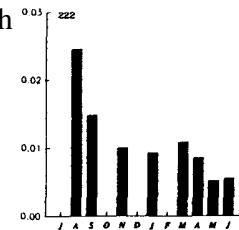
Collared Sparrowhawk *Accipiter cirrhocephalus*

U.BM

GBS: 18 records of sightings equally divided between north and south Canberra. The numbers again exceed sightings of the **Brown**

Goshawk. A=0.007. F=18.64%. W=13, R=0.74%. G=1.00.

Misc: 4 records.



Grey Goshawk *Accipiter novaehollandiae*

R.Vi

Misc: 1/10 Sep Mooreshead Drive GrL14 (CIG2), 1/20 Jan Mt Gingera GrC20 (TaM).

White-bellied Sea-Eagle *Haliaeetus leucogaster*

U.BVi

WBS: 12 records - 7 at LBath. 1 at LGeo, 4 at the Morass.

Misc: 1/28 Sep W of Coppins Crossing GrI13 (FyM). 1/26 Dec Smiths Crossing GrJ19 (BiJ). 1/1 Jan Commonwealth Bridge GrK14 (WrH), 1/5 Jan Jerrabomberra Wetlands GrL14 (BiJ), 1/12 May LGeo S GrR11 (VeP), 1/16 Jun Sullivan's Ck GrK13 (NU), 1/30 Jun Murrumbidgee R W of Hall (McJ).

Wedge-tailed Eagle *Aquila audax*

C.BR

GBS: 8 records of 10 birds. All the records this year are from south Canberra.

A=0.004. F=8.47%, W=6, R=0.33%. G=1.25.

WBS: 9 records of 15 birds. 7 of the records are from LBth.

Misc: 38 records of 52 birds. 2 breeding records.

Little Eagle *Hieraaetus morphnoides*

U.BR

GBS: Minimal changes since last year. A=0.005. F=13.56%, W=11. R=0.49%, G=1.00.

WBS: 9 records of 13 birds split between LGeo and LBath.

Misc: 20 records of 23 birds. 1 breeding record. 6 of the records are associated with water.

Spotted Harrier *Circus assimilis*
WBS: 1/28 Jan LGeo N GrR6 (LeM).

R.Vi

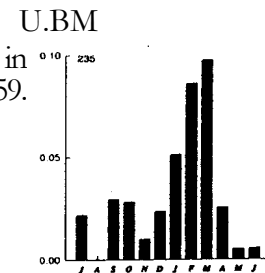
Marsh Harrier *Circus aeruginosus* U.BR
WBS: 13 records of 15 birds. 8 records at LGeo. 4 records LBth (LeM, DoM, CrI).
Misc: 6 records of 9 birds. scattered locations.

Black Falcon *Falco subniger* **R.Va**
WBS: 1/27 Dec LBath E GrY8 (LeM). 1/2 Jun LGeo N GrR6 (LeB).

Peregrine Falcon *Falco peregrinus* U.BR
GBS: 8 records of 9 birds in urban ACT. Little change from the previous year.
A=0.004. F=11.86%, W=8. R=0.33%, G=1.13.
WBS: 7 records. 5 at LGeo and 2 at LBath.
Misc: 9 records of 12 birds. 1 breeding record.

Australian Hobby *Falco longipennis* U.BM
GBS: Little change **front** last year except the numbers peaked in March instead of February. A=0.032, F=45.76. W=32, R=2.59. G=1.22.

Misc: 8 non-breeding records, no discernible pattern.



Brown Falcon *Falco berigora* U.BR

GBS: 14 records. A=0.007. F=11.86%, W=13, R=0.57%, G=1.14. Little change from last year.

WBS: 15 records, 12 at LBath. 2 at LGeo. 1 at the Morass. Largest single sighting 5/23 Sep (LeM), at LBath.

Misc: 35 records of 42 birds. 11 of the records are associated with water. Peak presence was Oct/Nov. 14 records. No records of breeding.

Australian Kestrel *Falco cenchroides* C.BR

GBS: Only three months (Jul, Sep and Jun) when this bird is not recorded. A=0.010, F=16.95. W=18. R=0.94%, G=1.04.

WBS: 28 records of 43 birds. Largest number 5/23 Feb LBath GrY8 (MiP).

Misc: 39 records of 53 birds. No breeding activity. 10 records in November.

QUAILS

Stubble Quail *Coturnix novaezelandiae* U.BR

WBS: 1/20 Oct, 1/25 Nov, 1/22 Jan LBthE GrY8.

Misc: 1/20 Sep (McI), A/4 Feb LGIN GrJ12 (GU). 10/18 Nov and 4/24 Nov

Jerrabomberra Wetlands GrL14 (LiB), 6/30 Dec Jerrawa Ck GrM3 (NiA). 1/2 Mar Kelly's Swamp GrL14 (McI). 1/10 Mar Murrumbidgee R GrJ16 (McI). 4/18 Mar O'Connor Ridge GrK12 (McI), A/3 May Nursery Swamp area GrM24 (GiJ).

Brown Quail *Coturnix australis*

R.BVi

Misc: 8/12-15. 26, 28 Nov Mt Arawang GrJ15 (BiJ). 1/24 Dec and 1/5 Jan Jerrabomberra Wetlands GrL14 (BiJ), 6/12 Feb, 2/25 Feb. 12/27 Feb. 4/29 Apr, 4/13 May LGin peninsula GrJ12 (PuD).

BUTTON-QUAIL, RAILS AND WATERHENS

Painted Button-quail *Turnix varia*

R.BR

Misc: One record only - 1/13 Apr Stromlo GrJ13 (LeB).

Lewin's Rail *Rallus pectoralis*

R.BVi

Misc: Four records from Kelly's Swamp GrL14 - 1/1 to 8 Feb. 3ad,2juv/10 Feb, 2/17 Feb (all ThR) and 1/18 Feb (TaM).

Australian Crake *Porzana fluminea*

R.BR

WBS: 5/19 May Morass GrZ8 (DoM).

Misc: 1/11 Feb, 2/9 Mar Jerrabomberra Wetlands GrL14 (LiB), 2/2 Mar Kelly's Swamp GrL14 (McI).

Spotless Crake *Porzana tabuensis*

R.Vi

WBS: 1/30 Jun Point Hut GrJ17 (HoJ)

Misc: 1/1 Sep CSIRO "Gungahlin" GrK12 (CIM), and at Kelly's Swamp GrL14. up to 5 birds 31 Jan to 17 Feb (ThR). 1/14 Feb (TaM). 1/16 Feb (BiJ) and 1/9 Mar (LiB).

Dusky Moorhen *Gallinula tenebrosa*

C.BR

Misc: 58 records from 15 grid cells. Breeding records from Jerrabomberra Wetlands GrL14 (LiB), LGin GrJ12 (McI), Farm dam GrQ11 (FyM).

Purple Swamphen *Porphyrio porphyrio*

C.BR

GBS: Only two records from a single site - Acton (PoH).

Misc: Common around urban lakes but no records submitted.

Eurasian Coot *Fulica atra* C . B R

WBS: LTug - Two records 3/21 Apr and 22/30 Jun. LBth, LGeo - More common than in previous years, max during the summer and early autumn. LGeo max Apr, a similar breeding record to last year- on nest (LeM).

Jul	Aug	Sep	Oct	Nov	Dec	Jan	Feb	Mar	Apr	May	Jun	
LBth	2365	930	892	240	735	2146	9845	2805	1403	4125	3395	1297
LGeo	79	0	15	2	16	335	222	187	0	1900	880	1700

Misc: 86 records from 24 grid cells, including one breeding record - dy/18 Jan Farm dam GrQ11 (FyM).

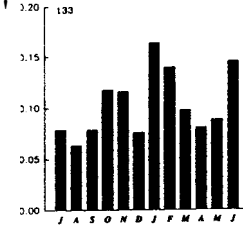
LAPWINGS, PLOVERS AND DOTTEREL

Masked Lapwing *Vanellus miles*

GBS: Similar numbers observed throughout the year and similar to last year. A=0.104. F=40.68%. W=50. R=6.32%, G=1.64.

WBS: A max number on all lakes in Feb, numbers up from last year.

C.BR



	Jul	Aug	Sep	Oct	Nov	Dec	Jan	Feb	Mar	Apr	May	Jun
LTug	-	5	-	9	-	4	-	19	-	11	-	2
LBth	47	42	48	50	137	118	132	<u>202</u>	<u>135</u>	147	60	17
LGeo	15	78	5	120	67	135	159	232	70	155	29	95

Misc: 74 non breeding records from 38 grid cells.

Banded Lapwing *Vanellus tricolor*

R.BVi

WBS: Only LBth, numbers down on last year. present at similar times. mainly early summer.

	Jul	Aug	Sep	Oct	Nov	Dec	Jan	Feb	Mar	Apr	May	Jun
LBth	1	0	2	4	6	2	0	0	0	0	0	0

Grey Plover *Pluvialis squatarola*

R.Vi

WBS: 3/15 Dec LBth GrY8 (LeM, ThR)

Lesser Golden Plover *Pluvialis dominica*

R.Vi

WBS: Only LBth, numbers similar to last year. present summer and autumn mainly. The injured bird of last year overwintered and stayed until Sep (see CBN 17 p. 43).

	Jul	Aug	Sep	Oct	Nov	Dec	Jan	Feb	Mar	Apr	May	Jun
LBth	1	1	1	0	32	0	28	29	29	0	0	0

Red-kneed Dotterel *Erythronys cinctus*

U.Vi

WBS: Many less records than last year. Two from LBth - 2/23 Sep and 1/21 Apr (LeM) and two from LGeo - 2/26 May and 20/end Jun (LeM).

Misc: A single record - 6/2 Jun LGeo GrR6 (LeB).

Double-banded Plover *Charadrius bicinctus*

U.Vi

WBS: As to be expected not present during spring and summer. Numbers similar to last year.

	Jul	Aug	Sep	Oct	Nov	Dec	Jan	Feb	Mar	Apr	May	Jun
LBth	5	29	0	0	0	0	0	1	27	42	0	0
LGeo	0	0	0	0	0	0	0	0	0	18	23	21

Misc: Present on 2 Jun LGeo GrR6 (LeB).

Red-capped Plover *Charadrius ruficapillus*

C.BR

WBS: LBth present all year, max Feb. LGeo not recorded since 1985/86, present late summer and autumn. max Apr.

	Jul	Aug	Sep	Oct	Nov	Dec	Jan	Feb	Mar	Apr	May	Jun
LBth	64	95	47	70	256	50	102	303	212	94	120	0
LGeo	0	0	0	0	20	27	100	75	0	454	360	25

Misc: Present on 2 Jun LGeo GrR6 (LeB).

Blackfronted Plover *Charadrius melanops*

U.BR

WBS: Regular LTug only. overall in smaller numbers than previous years.

	Jul	Aug	Sep	Oct	Nov	Dec	Jan	Feb	Mar	Apr	May	Jun
LTug	-	9	-	0	-	1	-	0	-	2	-	2
LBth	10	8	0	3	0	0	0	0	0	0	1	0
LGeo	0	0	0	0	0	0	0	0	0	0	0	0

Misc: 27 non-breeding records front 14 grid cells. Two breeding records - ne/18 Nov Yellangalo GrL3 (NiA), di/27 Jan Yass Rd nr "Salt Box" Hs GrC7 (LeB).

STILT AND AVOCET**Blackwinged Stilt** *Himantopus himantopus*

U.BVi

WBS: In greater numbers than last year, max LGeo Apr.

	Jul	Aug	Sep	Oct	Nov	Dec	Jan	Feb	Mar	Apr	May	Jun
LBth	0	0	0	2	11	9	53	26	35	0	10	0
LGeo	0	0	0	0	0	26	71	88	0	150	25	65

Misc: At LGeo S GrR11 - 2/11 Nov (WrH) and 5/23 Mar (DiB). 9/31 Dec Yellangalo Dam GrL3 (NiA). 1/1 May Uriarra Crossing GrG12 (BrG), 2/2 Jun LGeo N GrR6 (LeB).

Red-necked Avocet *Recurvirostra novaehollandiae*

U.Vi

WBS: 1/22 Jan LBth E GrY8 (LeM) and 2/end Jun LGeo N GrR6 (LeM).

SANDPIPERS AND ALLIES

Wood Sandpiper *Tringa glareola*

U.Va

WBS: The first record for LGeo - 1/25 Apr LGeo N GrR6 (LeM). Last recorded at Kelly's Swamp GrL14, in 1978. Not yet recorded at LBth

Common Sandpiper *Tringa hypoleucos*

R.Vi

WBS: One unusual record - 2/24 Feb Isabella Pond GrJ16 (ChS)

Greenshank *Tringa nebularia*

R.Vi

WBS: 1/15 Dec and 1/22 Jan LBth E GrY8 (LeM).

Marsh Sandpiper *Tringa stagnatilis*

R.Va

WBS: 1/16 Dec Silt Trap, Tuggeranong Gar (ChS, HoJ)

Latham's Snipe *Gallinago hardwickii*

U.M

WBS: Two records- 1/20 Oct and 1/15 Dec LBth E GrY8 (LeM).

Misc: Records from two sites - Jerrabomberra Wetlands GrL14 - present on 17 Aug (LiM), 2/28 Oct (PoH) and 2/9 Mar (LiB) and Museum of Australia site GrK13 - Present on 27 Nov and 1/6 Dec (PoH).

Bartailed Godwit *Limosa lapponica*

R.Va

WBS: A single unusual record and the first for LGeo - 1/22 Oct LGeo N GrR6 (LeM). The single observation last year was exactly a year earlier at LBth.

Sharptailed Sandpiper *Calidris acuminata*

C.M

WBS: LBth present Sep-Mar all at east basin, numbers greater than last year, max Oct. Unusual record from urban lake - 1/21 Oct LTug GrJ16 (BiJ).

	Jul	Aug	Sep	Oct	Nov	Dec	Jan	Feb	Mar	Apr	May	Jun
LBth	0	0	3	221	41	67	160	39	2	0	0	0
LGeo	0	0	0	13	0	0	0	20	0	2	0	0

Misc: 1/5 Jan Uriarra Crossing GrG12 (BrG).

Rednecked Stint *Calidris ruficollis*

U.Vi

WBS: All records at LBth were from the east basin.

	Jul	Aug	Sep	Oct	Nov	Dec	Jan	Feb	Mar	Apr	May	Jun
LBth	0	4	11	35	0	0	19	14	89	3	0	0
LGeo	0	0	0	0	0	0	0	0	0	12	18	29

Curlew Sandpiper *Calidris ferruginea*

U.Vi

WBS: LBth: A large increase in numbers from the single bird seen last year. All observations from east basin.

LBth	Jul 0	Aug 2	Sep 42	Oct	Nov 1	Dec 0	Jan 3	Feb 0	Mar 3	Apr 18	May 0	Jun 0
------	----------	----------	-----------	-----	----------	----------	----------	----------	----------	-----------	----------	----------

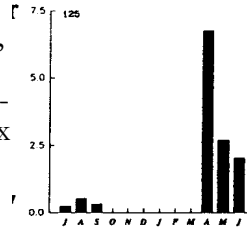
GULLS AND TERNS

Silver Gull *Larus novaehollandiae*

C.BR

GBS: A large increase in the number of observations from last year with records absent through the summer months. A=1.110, F=8.47%, W=17, R=0.99%, G=112.71.

WBS: Two records from LTug - 2/24 Feb and 5/21 Apr (Bij). LBth - Present throughout the year but in lower numbers than last year, max Sep and May. LGeo - Present all year, max Feb. As usual less than at LBth. One breeding record reported - ne/25 Nov LBth E (MiP).



	Jul	Aug	Sep	Oct	Nov	Dec	Jan	Feb	Mar	Apr	May	Jun
LBth	750	740	1300	193	645	1290	286	163	114	552	1261	78
LGeo	150	89	140	370	330	325	320	680	470	355	643	123

Misc: 31 non-breeding records throughout the year from 13 grid cells.

Whiskered Tern *Chlidonias hybrida*

R. Vi

WBS: LBth: An increase from the single observation last year. A summer visitor.

	Jul	Aug	Sep	Oct	Nov	Dec	Jan	Feb	Mar	Apr	May	Jun
LBth	0	0	0	8	22	25	0	0	0	0	0	0
LGeo	0	0	0	0	5	0	0	0	0	0	0	0

Gull-billed Tern *Gelochelidon nilotica*

R. Va

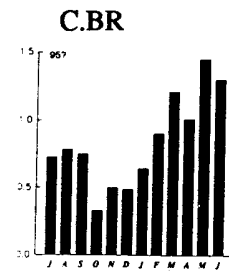
WBS: 1/25 Nov LBath GrY8 (MiP,ThR)

PIGEONS AND DOVES

Feral Pigeon *Columba livia*

GBS: Although not back to the level recorded in 1984-85 (A=1.125), there was again an increase in the measure of abundance (value up by 42%). Apart from the number of sites at which observations were recorded (F), other values were also up. A=0.829, F=52.54, W=52, R=12.23%, G=6.78%.

Misc: Of thirty-seven records (non-breeding) only one was from outside suburban Canberra, 1/2 Jun "Warralonga", Sutton Rd GrN13 (GrB). No breeding records.



Peaceful Dove *Geopelia placida*

R.BR

Misc: Further records this year from agistment paddocks adjacent to the Cotter Rd - 10/6 Oct and 7/19 May GrH15 (WrH). 1/27 Jan S of Wee Jasper GrA9 (LeB).

Common Bronzewing *Phaps chalcoptera*

U.BR

GBS: Following the significant fall in abundance value (A) reported for 1989-90 (0.010), there was a further drop of 60% for 1990-91. Other values were also down. A=0.004, F=3.39%, W=9, R=0.37%, G=1.00.

Misc: 27 non-breeding records from 15 sites widespread throughout the region.

Crested Pigeon *Ocyphaps lophotes*

U.BR

GBS: With the exception of the number of sites at which the species was recorded (F) (1989-90 - 16.39%) all values show a marked increase. In Page (AIB) there were records of up to 3 birds, for all weeks from Aug to May. In Holt (EGR) as many as 4 birds were reported in all months. First records for Gilmore (GrB) of up to 4 birds from Sep to Dec. A=0.049, F=6.78%, W=49, R=2.96%, G=1.67.

Misc: Records from 17 sites principally around the edges of Canberra, e.g. 16/21 Aug Ginninderra Village GrK11 (GU). Others from Barton Highway, 1/20 Oct Gr18 (LeB), 5/18 Nov Collector/Gunning Rd GrR5 (WrH), 1/28 Jan LGeo N GrR6 (LeM), 15/Apr-May "Berrebangalo" GrM3 (RoM). One unusual record from Nursery Swamp, Nov GrH23 (GU).

Wonga Pigeon *Leucosarcia melanoleuca*

C.BR

Misc: Five records, four of them from the ranges W of Canberra - 1/13 Oct Lee's Ck GrE15 (WrH), 1/13 Jan Blundell's Ck Rd GrD15 (LiB), 1/3 Feb Walk's Rd GrF14 (BoJ), 1/22 Jun Blundell's Ck/Wark's Rd GrE15 (LiB). One from Tallaganda SF - 1/2 Apr Harolds Cross Rd GrU20 (FyM).

COCKATOOS

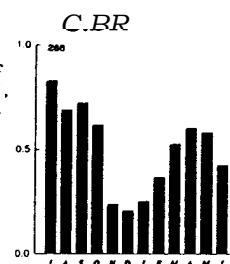
Glossy Black-Cockatoo *Calyptorhynchus lathami*
Misc: 3/2 Jun Urila (McR)

R.Vi

Yellow-tailed Black-Cockatoo *Calyptorhynchus funereus* C.BR
GBS: Two records only: 3/1 wk May Waramanga (TuE), 2/3 wk Jul Fisher (BiJ). Misc: 16 non-breeding records mostly outside the suburban area. Records in suburban area include 7/23 Sep Chapman GrI15 (HoJ), 7/4 Sep Cooleman Ridge GrI15 (HoJ).

Gang-gang Cockatoo *Callocephalon fimbriatum*

GBS: Abundance value (A) similar to 1989-90 (0.509). Seen in 74% of gardens. A=0.516, F=74.57%, W=52, R=20.48%, G=2.52 Misc: 40 non-breeding records. Breeding records: dy/16 Feb Ledgers Ck Rd GrE11 (FyM), ih/23 Sep O'Connor Ridge GrK13 (McI).



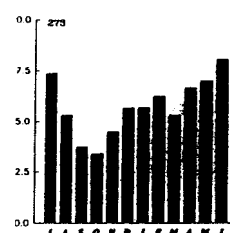
Galah *Cacatua roseicapilla*

C.BR

GBS: Abundance (A) slightly up from 1989-90 (5.146) following a decline the year before. Recorded at all sites. A=5.712, F=100%, W=52, R=79.52%, W=7.18.

WBS: Regularly sighted around LBth and LTug with largest flock of 45 on 26 Aug LBth GrY8 (LeM).

Misc: 168 non-breeding records; breeding records ih/15 Sep J15 Oakey Hill GrJ15 (WrH), dy/18 Nov Collector to Gunning rd GrP2 (LeB), on/20 Nov



Long-billed Corella *Cacatua tenuirostris*

Misc: Possible escapees - 1/27 Jul Parkes (McD), 3/3 Aug Parkes (McD)

Little Corella *Cacatua sanguinea*

GBS: Possible escapees - 1-7/2wk Aug to 2wk Jun Holt GrI12 (EGR), 1/2wk Feb Macquarie GrJ13 (CoD), 1/1wk Aug Weston GrJ15 (LeB)

Misc: Possible escapees - 2/3 Aug Parkes GrL14 (McD), 4/9 Sep Mugga Lane GrL15 (FyM)

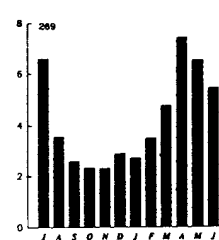
Sulphur-Crested Cockatoo *Cacatua galerita*

C.BR

GBS: Increase in abundance value (A) over 1989-90 (3.583). Seen in 98% of gardens. A=4.239, F=98.3%, W=52, R=66.54%, G=6.37.

WBS: Usually present LBth and LTug with largest number 175/22 Jul The Morass GrZ7 (DoM).

Misc: 148 non-breeding records.



LORIKEETS

Rainbow Lorikeet *Trichoglossus haematodus*

R.M

GBS: A number of reports from the Aranda/Cook area GrJ13 with two confirmed records: 1/8 Nov Aranda (HaK), 1/2-6 June Cook (DaB).

Little Lorikeet *Glossopsitta pusilla*

R.Vi

GBS: 4/1 Nov Fisher (Bij)

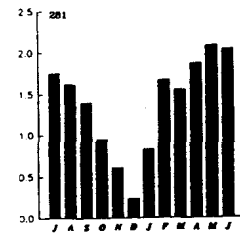
Misc: 4/2-5 Nov Campbell Pk GrM13 (LeM), 5/12 Dec Campbell Pk GrM13 (PoH).

PARROTS

Australian King Parrot *Alisterus scapularis*

C.BR

GBS: Abundance value (A) similar to 1989-90 (1.368). Seen in 78% of gardens, about the same as last year. Consistent seasonal pattern. A=1.389, F=77.97%, W=52, R=31.44%, G=4.42. **Misc:** 31 non-breeding records



Superb Parrot *Polytelis swainsonii*

R.Vi

Misc: 2/8 Oct Murrumbateman GrI6 (LeB), 2/11 May roadside reserve GrL4 (RoM)

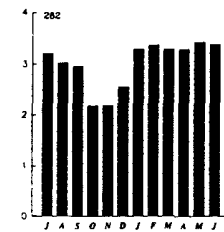
Crimson Rosella *Platycercus elegans*

C.BR

GBS: Slightly more abundant than 1989-90 (A=2.909). Seen in 98% of gardens. A=3.007, F=98.31%, W=52, R=83.95%, G=3.58.

WBS: Usually around LBth GrY8.

Misc: 235 non-breeding records. One breeding record: ny/19 Nov Nursery Swamp GrH23 (GU).



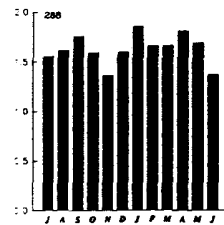
Eastern Rosella *Platycercus eximius*

C.BR

GBS: Abundance (A) up from 1989-90 (1.42). Seen in 94% of gardens. A=1.635, F=94.92%, W=52, R=62.07%, G=2.63.

WBS: Usually around LBth GrY8 and Morass GrZ7.

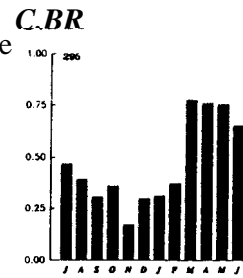
Misc: 159 non-breeding records. Breeding record: ih/23 Sep O'Connor Ridge GrK13 (McI)



Port Lincoln Ringneck *Barnardius zonarius*

Misc: (escapes) 1/1 Oct Ainslie GrL13 (DrD), 1/17 Nov Campbell GrL13 (BaG).

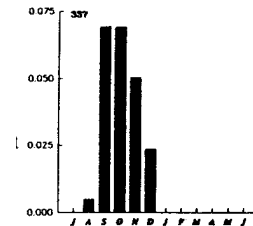
Redrumped Parrot *Psephenurus haematonotus*
 GBS: Increase in abundance (A) over 1989-90 (0.357) after very large decreases in abundance since 1984-85 (0.76). A=0.469, F=37.29%, W=52, R=9.98%, O=4.70.
 WBS: Regularly at LTug GrJ16.
 Misc: 66 non-breeding records, largest number 46/19 May paddocks S of William Hovell Dr GrI13 (FyM).



Budgerigar *Melopsittacus undulatus* GBS:
 1 (escapee)/3wk Jun Deakin (NiA).

CUCKOOS

Pallid Cuckoo *Cuculus pallidus* C.BM
 GBS: All values down, abundance value (A) by 42% (1989-90=0.033). First 1/4wk Aug Fraser (PeJ), last 1/4wk Dec Campbell (RoC). A=0.019, F=22.03%, W=18, R=1.85%, G=1.02.



Misc: 30 non-breeding records involving one or two birds, from twenty sites. First 1/20 Aug Hall GrI11 (MiJ), last 1/20 Jan Bidges Rd GrN12 (WrH).

Brush Cuckoo *Cuculus variolosus* U.BM
 GBS: 3 records - 1/3wk Nov Fisher GrJ15 (BiJ), 1/4wk Nov Weston GrJ15 (LeB), 1/3wk Jan Garran GrK15 (AIR).

Misc: Non-breeding records from nine locations extending from Lake Rd GrR 11 20 Jan (WrH), to "Paringa", Anembo GrS24, 4 Nov (StG) and Shanahans Mtn Gr126 28 Jan (BoJ) in the south to Lee's Ck GrE15 13 Oct (WrH) in the west.

Fan-tailed Cuckoo *Cuculus pyrrhophanus* C.BM
 GBS: All values down. First 1/2wk Sep O'Connor GrKI3 (APC), last 1/2wk Jun Cook (BrM). A=0.014, F=18.64%, W=21, R=1.40%, G=1.00.

Misc: 42 non-breeding records from all parts of the region. First 1/29 Jul Mt Ainslie GrL13 (McI), last 1/17 Feb Doctors Flat Rd GrE12 (FyM).

Horsfield's Bronze Cuckoo *Chrysococcyx basalis* C.BM
 GBS: Pattern of observations and abundance value similar to 1989-90 but recorded a fewer sites and over fewer weeks of the year. First 1/1wk Sep Bruce GrK12 (HaK), last 1/1wk Mar Aranda GrJ13 (MaD). A=0.009, F=11.86%, W=12, R=0.82%, G=1.10.
 Misc: 15 non-breeding records, first 1/9 Sep Mt Mugga Mugga GrK15 (FyM), last 2/26 Feb "Candlebark" Hs GrP15 (LeB). 1 breeding record dy(Buff-rumped Thornbill)/12 Dec Campbell Pk GrM13 (PoH).

Shining Bronze Cuckoo *Chrysococcyx lucidus*

C.BM

GBS: Drop in all vaJues (1989-90 - A=0.015, F=18.03%, W=25). First 1/1wk Oct (late) Cook GrJ13 (BrM), last 1/1wk Macquarie GrJ13 (CoD). A=0.005, F=8.47%, W=9, R=0.49%, G=1.08.

Misc: Only 19 records from thirteen widely scattered locations. First 1/20 Jul Black Mtn GrK13 (LeB), last 1/17 Feb Doctors Flat Rd GrE12 (FyM).

Common Koel *Eudynamys scolopacea*

R.M

GBS: 3 records - 1/4wk Oct Kambah GrJ16 (McD), 1/3wk Dec Kambah GrJ16 (McD), 1/1wk Jan Duffy GrJ14 (PoH).

Misc: 4 non-breeding records - 1/2 Nov Aranda GrJ13 (FIR), 1/8 Dec Kambah GrJ16 (WiS), 1/18 Dec Weston GrJ15 (BoJ), 1/25 Dec Kambah GrJ16 (BiJ).

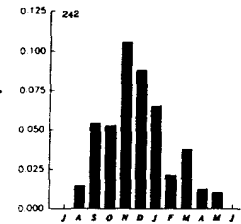
OWLS

Southern Boobook *Ninox novaeseelandiae*

C.BR

GBS: Recorded in north and south Canberra. Greatest number of recordings within Weetangera by four observers: FyM, WoD, GJN, LaD. Again there is a peak during spring. A31.038, F=28.81%, W=36, R=3.74%, G=1.02.

Misc: 6 records of 7 birds.



Barn Owl *Tyto alba*

R.Vi

Misc: 1 record - 1/19 May Dairy Road, Fyshwick GrLI4 (LiB).

FROGMOUTH

Tawny Frogmouth *Podargus strigoides*

U.BR

GBS: 45 records, of which 38 from Cook (BrM). The 38 records are the result of the regular observation of a pair which nested in Cook. The other records are 7 in Chapman and 1 in Kambah. A=0.042, F=5.08%, W=39, R=1.89%, G=2.22.

Misc: 2 records of 3 birds. 1 breeding record at Queanbeyan.

SWIFT

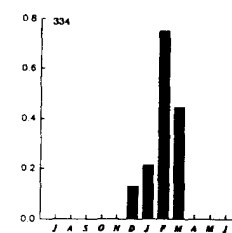
White-throated Needletail *Hirundapus caudacutus*

C.M

GBS: First record 1/3wk Dec Weetangera GrJ13 (FyM), last 30/4wk Mar Campbell (RoC). Average group size of 10 was similar to last year. A=0.0119, F=23%, W=12, R=1.11%, G=10.74.

WBS: Only record 150/23 Mar at LBth GrY8.

Misc: Four records only, earliest 10/7 Feb Mt Painter GrJ13 (DaB), last 3/17 Mar Burbong Bridge GrP15 (LeB).



KINGFISHERS, BEE-EATER AND DOLLARBIRD

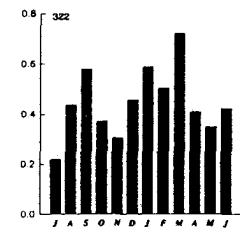
Laughing Kookaburra *Dacelo novaeguineae*

GBS: There were two peaks in observations again this year in Sep and Mar (one month later than last year in both cases). A=0.442, F=88%, W=21, R=1.44%, G=1.06.

WBS: Recorded twice at LBth W. 1/23 Sep (LeM), 1/16 Dec (CrI).

Misc: 154 non-breeding records.

C.BR



Sacred Kingfisher *Halcyon sancta*

U.BM

GBS: Spring and autumn peaks in Oct and Jan one month earlier than last year. First record 1/2wk Oct Weetangera (FyM), last Weetangera 1/3wk Mar (WoD). A=0.015, F=23.73%, W=21, R=1.44%, G=1.06.

Misc: 35 non-breeding records, first 1/29 Sep Wargella Rd N of Yass GrF1 (WrH), last 1/29 Mar Bruce Ridge GrK13 (McI). 2 breeding records: dy/3 Jan Campbell Pk GrM13 (LiB) and cf/20 Jan GrN12 (WrH).

Rainbow Bee-eater *Merops ornatus*

C.BM

GBS: Four records only - 1/2wk Oct Charnwood (MaK), 5/2wk Oct O'Connor (APC), 3/2wk Mar O'Connor (MeR) and 25/2wk Mar Weston (LeB).

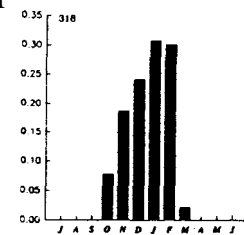
Misc: 14 non-breeding records, first A/15 Oct GrI6 (LeB), last 15/24 Feb Banks of Murrumbidgee R GrG9 (LeB).

Dollarbird *Eurystomus orientalis*

U.BM

GBS: 126 records, first 1/3wk Oct Campbell (RoC), last 2/2wk Mar Turner (CrJ). Observed peak in Jan (Feb last year). A=0.092, F=44.07%, W=22, R=5.17%, G=1.77.

Misc: 21 non-breeding records, first 1/27 Oct Mt Ainslie GrLI3 (CIS), last 2/2 Mar Kelly's Swamp GrL14 (McI).



Superb Lyrebird *Menura novaehollandiae*

C.BR

Misc: Only 12 non-breeding records, in most months of year.

LARKS

Singing Bushlark *Mirafra javanica*

R.M

WBS: 1/24 Feb Silt trap, Tuggeranong GrJ16 (ChS).

Skylark *Alauda arvensis*

C.BR

GBS: Only one record 1/1wk Oct Holt (EGR).

WBS: 35 records from all sites and in all months. Records of large numbers were 107/21 Jul LBth E basin GrY8 (MiP) and 50/23 Sep LBth E (LeM).

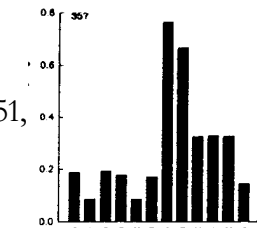
Misc: 16 records from most months except Jan, Feb, Mar and Jun.

SWALLOWS AND MARTINS

Welcome Swallow *Hirundo neoxena*

C.BR

GBS: The average number of birds seen was similar to last year (0.289 vs last years 0.267) following the rise of the last two years, Recorded in 51 weeks of the year with the observed peak this year being in January and trough in August. A=0.289, F=47.46%, W=51, R=7.39%, G=3.91.



WBS: Except in Jun, regularly recorded at all sites. Numbers at LBth varied from 3 in Oct to 850 in Feb.

Misc: Recorded in all months of year throughout the Canberra region. Breeding records include ny/20 Oct GrA2 (WtH), and dy/12 Dec CSIRO, Acton GrK13 and dy/23 Dec nr Caloola Farm GrJ22 (both LeB).

Tree Martin *Cecropis nigricans*

C.BM

GBS: 16 records only, most of up to 4 birds in period Dec to Feb inclusive. Three records outside that period 1/4wk Jun and 17/2wk Sep - both Kambah (VeP) and 1/5wk Apr Weston (LeB). A=0.023, F=8.47%, W=13, R=0.66%, G=3.5.

WBS: 8 non-breeding records in LBath area GrY8 from Sep to Mar inclusive, first 12/23 Sep LBth W (LeM), last 1/23 Mar LBth E (MiP). Also two breeding records ny/28 Oct LBthW and ih/16 Dec Morass N GrZ7 (both CrI).

Misc: 36 non-breeding records in all months except Apr and Jun. Maximum numbers 23/21 Nov Grid 113 and 22/2 Feb Grid 114 (both FyM) and 20/31 Mar nr Stun Is GrH12 (LeB).

Fairy Martin *Cecropis ariel*

U.BM

WBS: Four records only. 3/24 Jul LGeo GrR6 (LeM), 10/21 Oct LTug GrJ16 (BiJ), and two at LBth E GrY8 - 4/22 Jan (LeM) and 1/23 Mar (MiP).

Misc: 9 non-breeding records, first 1/1Sep paddocks S of Wm Hovell Dr GrI13 (FyM), last 2/24 Mar LGin GrJ12 (McI). An unusual record was of about 30 birds on 3 Mar The Big Hole GrX24 (LuN). Single breeding record of nb/21 Nov culvert close to Molonglo R Gr 113 (FyM).

PIPIT

Richards Pipit *Anthus novaeseelandiae*

C.BR

GBS: 3 records only 1/5wk Oct Gilmore (GrB), 1/2wk Nov and 1/1wk Jan - both Bruce (HaK).

WBS: Regularly recorded in all months and at most sites. Maximum numbers 29/19 Aug Isabella Pond (DuG).

Misc: Recorded in small numbers in all months of year. Two breeding records cf/28 Oct LGeo (LeB) and cf/21 Nov GrI13 (FyM).

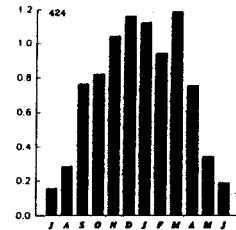
CUCKOO SHRIKES AND ALLIES

Black-faced Cuckoo-shrike *Coracina novaehollandiae* C.BR

GBS: Present all year but with a noticeable decline in winter, June and July being the months with lowest numbers. $A=0.726$, $F=96.61\%$, $W=52$, $R=1.425\%$, $G=1.64$.

WBS: breeding record on/16 Dec LBth W GrY8 (CrI). 4 other records scattered throughout year.

Misc: 128 records throughout our region in all months. Breeding records as follows; dill Oct Federal Golf Course GrK12 (MB), ne/15 Oct ANU GrK13 (PoH), on/28 Oct Campbell Pk GrM13 (McI), on/17 Dec Mt Painter GrJ13 (DaB). A collection of interesting sightings were 25, 14 and 15 birds at Mt Painter on 5, 6 and 7 Feb respectively (all DaB) followed by 12 birds on Wanniasa Hill GrK16 on 17 Feb (GrB). There were no other sightings of over 7 birds.



White-bellied Cuckoo-shrike *Coracina papuensis*

R.Va

Misc: 1/3 Apr Rivett GrI15 (HoJ).

Cicadabird *Coracina tenuirostris*

U.M

Misc: 1 record of a single bird - 26 Nov Piccadilly Circus GrD15 (VeP).

White-winged Triller *Lalage sueurii*

U.BM

GBS: Recorded in Fraser from 4wk Sep to 3wk Dec, one to two birds (PeJ). Also recorded in Holt 2/2wk Nov and 1/1wk Dec (EGR).

Misc: 20 records, first 6/28 Oct Campbell Pk GrM13 (PoH), last 4/1 Feb (with dependent young) nr Aranda GrJ13 (WeS). Other breeding records were cf/24 Nov Campbell Pk GrM13 (LiB) and ny/18 Jan E side of Gundaroo Rd GrQ11 (FyM). Maximum recording 8/12 Dec Campbell Pk GrM13 (PoH).

THRUSHES, FLYCATCHERS, WHISTLERS AND ALLIES

White's Thrush *Zoothera dauma*

U.BR

GBS: 1/3wk Feb and 1/4wk Feb Macgregor (MoR) and 1/5wk Apr Duffy (SmM).

$A=0.001$, $F=3.39\%$, $W=3$, $R=0.12\%$, $O=1.00$.

Blackbird *Turdus merula*

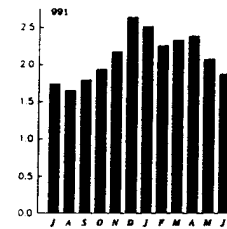
C.BR

GBS: There was an increase in the abundance value (A).

Widespread in established suburbs. First breeding record ne/1wk Dec Weetangera (FyM), last ny/1wk Feb Chapman (HAJ).

A=2.1Q9, F=96.6%, W=52, R=79.9%, G=2.64.

Misc: Largest numbers - 7/5 March "Tombonda" Hs, Jerrabomberra Ave GrL15 (LeB), 6/29 Apr Mt Painter Cook GrJ13 (DaB). New records from N and E of ACT - A/4 May "BerrebangaJo" Lade Vale Rd GrM3 (RoM) and 1/19 May Smith's Gap GrR12 (LeB).



Rose Robin *Petroica rosea*

U.BM

GBS: First rec: 1/1wk Jul Chapman (HAJ), last 1/3wk Jun Cook (BrM). A=0.017, F=16.95%, W=20, R=1.48%, G=1.17.

Misc: Four records - 1/28 Jul GrK13 (McI), 1/13 Oct Lee's Ck, Walk's Rd GrE15 (WrH), 2/3 Mar The Big Hole GrX24 (LuN) and I/2 Jun Murrumbidgee R GrH15 (L-11N).

Pink Robin *Petroica rodinogaster*

R.M

Misc: 1/29 Jul Evatt GrJ12 (GU), 1/28 Apr Major's Ck to Araluen rd GrZ20 (LiB).

Flame Robin *Petroica phoenicea*

C.BM

GBS: First 1/3wk Jul Kambah (McD), last 2/2wk Jun. Absent Sept till Feb. A=0.015, F=11.86%, W=16, R=0.985%, G=1.54.

WBS: Four records.

Misc: Widely reported. Largest numbers: 10/26 Aug Nursery Swamp trail GrG22 (FyM), 10/4 Nov "Paringa", Anembo GrS24 (LiB) and 7/28 Jan Southern Forest Way, Tallaganda SF GrU22 (LeB).

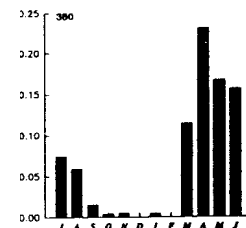
Scarlet Robin *Petroica multicolor*

C.BR

GBS: Recorded all months except Oct, Dec-Feb. A=0.070, F=49.15%, W=31, R=5.01%, G=1.39.

WBS: 1/30 Jun Tuggeranong main lake GrJ16 (HoJ).

Misc: Widely reported throughout region. Largest numbers: 6/28 Apr Bendoura SF GrY21 (FyM), 6/11 May Honeysuckle Farm GrM15 (BrG) and 9/16 Jun 1.5km NW of "Warralonga" Hs GrN13 (StG).



Red-capped Robin *Petroica goodenovii*

R.BVi

Misc: 2ad,2juv/Oct Charnwood GrI1 (PrJ), 1/24 Mar "Malcolmvale" Hs GrN14 (vGH)

Hooded Robin *Melanodryas cucullata*

U.BR

Misc: Reported from 12 locations. Largest numbers: 6/3 Nov "Paringa", Anembo GrS24 (LiB), 6/4 Nov 1km E of Theodore GrL17 (GrB) and 5/7 Apr Yalgum Ck GrQ14 (GrB). Also a record from a new area - A/2 May Lade Vale Rd GrN2 (RoM).

Eastern Yellow Robin *Eopsaltria australis*

C.BR

GBS: One recorded for 13 weeks in O'Connor from 3wk Sept till 1wk Apr. This species has difficulties in urban areas.

Misc: Reported from 35 different locations including many new sites outside the ACT. 4/1 Apr "Kirawin", Mountain Ck Rd GrE8 (LeB), 2/28 Apr Bendoura SF GrY21 (FyM) and 1/17 Feb Doctor's Flat Rd GrE12 (FyM). Largest number: 10/2 Aug Tidbinbilla NR GrF18 (PoH).

Jacky Winter *Microeca leucophaea*

U.BR

GBS: One record over four weeks at one site. 4wk May and 1, 3, 4wk Jun Torrens (AJP)

Misc: Recorded at four sites, a decline from last year. 2/28 Oct SW of "Uriarra" Hs GrF14 (LeB), A/19 Nov Nursery Swamp, Namadgi NP GrH23 (GIJ), 2/20 Apr The Big Hole GrX24 (LuN) and 2/12 May Reserve near "Kirawin" GrE8 (LuN).

Crested Shriketit *Falcunculus frontatus*

U.BR

Misc: Reported from 14 sites including 2/29 Sept Wargela Rd, Yass GrF1 (WrH), 2/4 Nov W of "Paringa", Anembo GrR24 (LiB), 2/27 Jan Wee Jasper area GrA9 (LeB) and 3/25 Feb LGin peninsula GrJ12 (PuD).

Olive Whistler *Pachycephala olivacea*

U.BR

GBS: Only record - 1/3wk Apr Stirling (JoD).

Misc: One record. A/9 Nov 1.5km NE Mt Cronin, Kelly's Rd GrU19 (FiB). Fewer non-urban records than last year.

Golden Whistler *Pachycephala pectoralis*

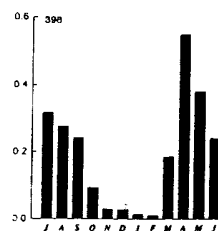
C.BR

GBS: Recorded in all months. An increase in abundance on last year.

A=0.203, F=69.49%, W=43, R=15.23%, G=1.33.

WBS: 1/23 Sept LBath, W basin GrY8 (LeM).

Misc: Recorded at 37 different sites including 2/2 Sept Mulloon Fire Trail GrV17 (DCM), 2/9 Nov Rocky Pic GrU21 (FiB), 2/16 Dec Lowden Forest Pk GrW19 (CIG1) and 4/21 Apr Stony Ck to Uriarra Rd GrH14 (FyM).



Rufous Whistler *Pachycephala rufiventris*

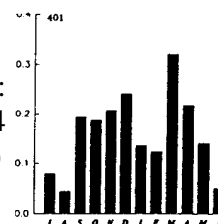
C.BM

GBS: Similar values to last year. A=0.161, F=64.40%, W=52,

R=12.07%, G=1.33.

WBS: LBth GrY8, 1/23 Sept (LeM), 1/16 Dec and 1/21 Jan (CrI). Misc:

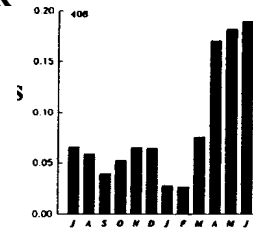
114 records from throughout the region. Significant numbers include; 14/4 Oct E O'Malley GrK15 (PoH), 13/3 Nov "Paringa", Anembo GrS24 (LiB) and 25/12 Dec Mt Ainslie E/Campbell Pk GrM13 (PoH).



Grey Shrike-thrush *Colluricincla harmonica* **C.BR**

GBS: Similar values to last year. A=0.085, F=45.76%, W=49, R=7.96%, G=1.06.

Misc: 141 records from throughout the region. Largest number: include 4/15 Jul Orroral Valley, NW of tracking station GrG21 (McD), 6/11 Aug Molonglo R to Coppins Crossing Rd GrI14 (FyM) and 3/18 Nov Collector to Gunning Rd GrP3 (LeB).



Leaden Flycatcher *Myiagra rubecula* **C.BM**

GBS: 68 reports from 11 gardens. First - 1/2wk Oct O'Connor (APC); last - 1/1wk Apr Kambah (VeP). Largest number 4/4wk Jan Cook (**DaB**). A=0.043, F=23.73%, W=23, R=2.79%, G=1.53.

Misc: 29 records including 4/18 Nov Mundoonen NR GrJ3 (LeB), 1 nb/26 Jan Kowen GrR14 (KrS) and 2/17 Feb Doctor's Flat Rd GrE12 (FyM).

Satin flycatcher *Myiagra cyanoleuca* **C.BM**

GBS: 3 records - 1/3wk Oct, Fisher (BiJ), 1/4wk Oct Chapman (HAJ) and 1/5wk Oct Weetangera (FyM).

Misc: 11 records, including 6/13 Oct Lee's Ck, Wark's Rd GrE15 (WrH), A/19 Nov Nursery Swamp, Namadgi NP (GU) and 5/3 Feb Blundell's Ck Rd, Wark's Rd GrF14 (**BoJ**).

Restless Flycatcher *Myiagra inquieta* **U.BR**

GBS: 27 records from 11 gardens. Recorded in all months except June. A=0.013, F=18.64%, W=23, R=1.11%, G=1.15.

Misc: Oct Lake Burrinjuck GrA8 (CIG1), 6 dy/27 Jan Wee Jasper area GrA9 (**LeB**).

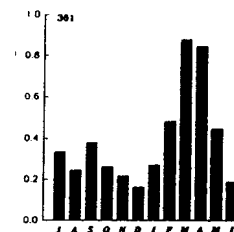
Rufous Fantail *Rhipidura rufifrons* **U.BM**

GBS: 7 records from 5 gardens. First 1/4wk Feb Chapman (BBG), last 1/1wk Apr Chapman (HAJ). Others 2/4wk Mar Melba (MoM) and 1/1wk Apr Cook (BrM). Misc: 10 records - 1/9 Nov Rocky Pic Rd GrU22 (FiB), 10/3 Feb Blundell's Ck Rd, Wark's Rd GrF14 (BoJ) and A/16 Apr "Berrabangalo", Lade Vale Rd GrM3 (**RoM**).

Grey Fantail *Rhipidura fuliginosa* **C.BM**

GBS: Similar values to last year, present in all months. A=0.397, F=88.14%, W=52, R=25.86%, G=1.54.

Misc: 188 records including 20/23 Sept O'Connor Ridge/Bruce Ridge GrKI3 (Mel). 25/1 Jan "Kirawin" area GrE8 (LeB) and 1/20 Apr The Big Hole GrX24 (LuN).



Willie Wagtail *Rhipidura leucophrys*

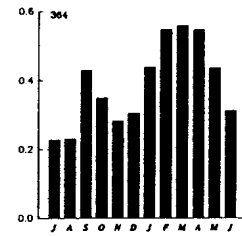
C.BR

GBS: An increase in A, F and R values on last year. Present in all months.

Only one breeding record - dy/4wk Jan Ainslie (BaJ). A=0.389,

F=94.92%, W=52, R=28.61%, O=1.36.

Misc: 160 records including 3/11 Nov Rose Lagoon GrU4 (WrH), 2/25 Nov Jerrawa Ck, Lade Vale Rd GrM3 (NiA) and A/11 May Roadside reservoir GrL4 (RoM).



WHIPBIRD AND QUAIL-THRUSH

Eastern Whipbird *Psophodes olivaceus*

U.BR

Misc: 3 non-breeding records only, 2 from Blundell's Ck area, and 1/9 Nov Tallaganda SF GrU19 (FiB).

Spotted Quail-thrush *Cinclosoma punctatum*

U.BR

Misc: 9 non-breeding records, mostly from S and W ACT, except for 1/2 Sep E of Hoskinstown GrV17 (DCM), 2/5 May Kowen GrO14 (LeB) and an unusual record from urban area - 1/23 Mar Black Mm GrK13 (McI).

OLD WORLD WARBLERS

Clamorous Reed-Warbler *Acrocephalus stentoreus*

C.BM

WBS: 4 non-breeding records; 2 each from LGeo GrR6 and LBth. Misc: 36 non-breeding records.

Little Grassbird *Megalurus gramineus*

U.BR

WBS: 1/21 Apr LBth (CrI).

Misc: 4 non-breeding records, all from the Jerrabomberra Wetlands area GrL14 except 1/23 Sep Sewage ponds W of Coppins Crossing GrI13 (FyM).

Golden-headed Cisticola *Cisticola exilis*

U.BR

GBS: 3 records from a garden near large areas of open grassland. 1/1wk Oct, 1wk Jan and 2wk Mar Holt Gr 112 (EGR). A=0.001, F=1.69%, W=3, R=0.12%, G=1.00 WBS: As with 1989-90, recorded regularly from LBth, max 5/22 Jan (LeM); also regular at LTug, max 6/16 Dec (BiJ). 3 records of birds from LGeo. Misc: 32 non-breeding records.

Rufous Songlark *Cinchorhamphus mathewsi*

U.BM

WBS: 1/25 Nov LGeo GrR11 (LeM).

Misc: 10 non-breeding records.

Brown Songlark *Cinclorhamphus cruralis*

R.BM

Numbers remain low after high numbers in 1988-89.

WBS: 1/25 Nov LBth (LeM).

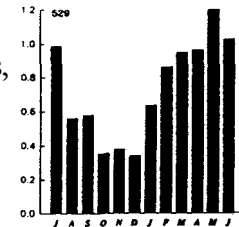
Misc: 3 non-breeding records, 1/22,29 Oct "Hawthorn" Hs N of Murrumbateman GrI5, and 1/11 Nov W of Hoskingtown GrR17 (all LeB).

WRENS, THORNBILLS AND ALLIES

Superb Fairy-wren *Malurus cyaneus*

C.BR

GBS: Recorded at 43 sites, slightly up. However, both the average number of individuals recorded (A) and the number of weeks during which the species was recorded (R) decreased slightly. As in past years, recording rates lowest from Aug to Dec. A=0.7323, F=72.88%, W=52, R=23.56%, G=3.11.



WBS: 10 non-breeding records.

Misc: 290 non-breeding records.

Pilotbird *Pycnoptilus floccosus*

U.BR

Misc: 2 non-breeding records - 2/13 Jan Blundell's Ck Rd GrD15 (LiB), 2/3 Feb Blundell's Ck Rd/Wark's Rd GrF14 (BoJ).

White-browed Scrubwren *Sericornis frontalis*

C.BR

GBS: Recorded at 13 sites, with sightings in all months. Recording rate (R) and abundance (A) were down considerably. The index of distribution (F) and the average numbers recorded (G) were down slightly. A=0.0599, F=22.03%, W=44, R=3.65%, G=1.64.

Misc: 86 non-breeding records.

Chestnut-rumped Hylacola *Sericornis pyrrhopygius*

R.BR

Misc: 2 non-breeding records - 3/3 Mar and 1/20 Apr The Big Hole GrX24 (LuN).

Speckled Warbler *Sericornis sagittatus*

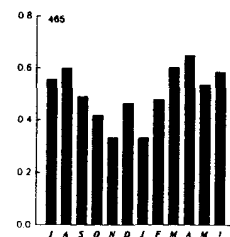
U.BR

GBS: 40 records were from one site at O'Connor adjacent to Black Mtn GrK13 (APC). 3 records from Cook (BrM). A=0.041, F=3.39%, W=43, R=1.77%, G=2.30. **Misc:** 54 non-breeding records.

Weebill *Smicrornis brevirostris*

C.BR

GBS: Recorded at 35 sites. Abundance (A) decreased after increases in the previous two years; whilst distribution (F) was effectively unchanged. Recording rate (R) down slightly. A=0.5037, F=59.32%, W=52, R=21.14%, G=2.38.



Misc: 87 non-breeding records.

Western Gerygone *Gerygone fusca*

U.BM

GBS: 10 records each of individual birds in Holt (EGR), Cook (BrM) and Aranda (OrP). First record 1/3wk Sept Aranda (OrP), last 1/4wk Mar Holt (EGR).

Misc: 28 non-breeding records.

White-throated Gerygone *Gerygone olivacea*

C.BM

GBS: Records of birds (mainly individuals G=1.08) from 3 sites. First record - 2/4wk Sept Holt (EGR), last 1/4wk May Weetangera (FyM). A=0.016, F=22.03%, W=20, R=1.48%, G=1.08.

Misc: 41 non-breeding records.

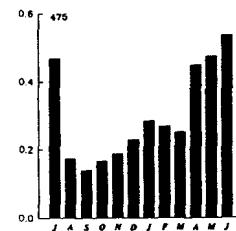
Brown Thornbill *Acanthiza pusilla*

C.BR

GBS: Statistics substantially unchanged, A=0.302, F=47.46%, W=52, R=15.72%, G=1.92. As in previous years, larger numbers observed in winter months than during other seasons.

WBS: 3 records each of individual birds from LBth.

Misc: 101 non-breeding reports.



Buff-rumped Thornbill *Acanthiza reguloides*

C.BR

GBS: Records from 10 sites. Birds are present all year with seasonal fluctuations in numbers. A=0.139, F=16.95%, W=44, R=3.28%, G=4.23.

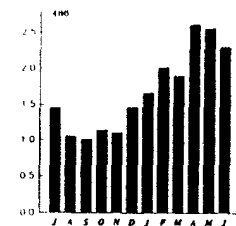
Misc: 117 non-breeding records. 2 breeding records both Campbell Pk GrM13 - ne/2 Dec (McI) and nb/3 Jan (LiB).

Yellow-rumped Thornbill *Acanthiza chrysorrhoa*

C.BR

GBS: Records from 54 sites. Some seasonal variations with larger numbers observed from Feb to Apr. Abundance and distribution largely unchanged. A=1.683, F=91.53%, W=52, R=39.45%, G=4.27.

WBS: 12 non-breeding records LBth GrY8, Morass GrZ7, LTug GrJ16. 1 breeding record dy/16 Dec Morass, north pool GrZ7 (CrI).



Misc: 159 non-breeding records. 8 breeding records - nb/21 Jul 2 sites between Wm Hovell Dr and Molonglo R Gr 113 (FyM), nb/22 Jul Woodland beside Coppins Xg Rd GrI14 (FyM), nb/9 Sept Googong Dam picnic area GrO16 (WrH), ny/16 Nov Red Hill GrK14 (WrH), nb/3 Nov and cf/4 Nov vicinity "Paringa", Anembo GrS24 (LiB).

Yellow Thornbill *Acanthiza nano*

U.BR

GBS: 6 records covering a total of 24 birds from 7 sites in Ainslie, Campbell, Chapman, Weetangera, Kambah, Aranda and Kambah.

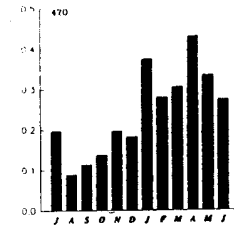
Misc: 22 non-breeding records.

Striated Thornbill *Acanthiza lineata*

GBS: Abundance up significantly from last year (A.160). As in previous years, species is most abundant in autumn. A=0.243, F=45.76%, W=52, R=8.46%, G=2.87.

Misc: 82 non-breeding records. 1 breeding record - ny/20 Nov Nursery Swamp GrH23 (GU).

C.BR



Southern Whiteface *Aphelocephala leucopsis*

U.BR

WBS: 2/25 Nov Morass N pool GrZ7 (DoM).

Misc: 31 non-breeding records. 2 breeding records - dy/27 Oct "Bibaringa" paddock GrH15 (WrH), dy/4 Nov W of "Paringa". Anembo GrR24 (LiB).

SITTELLA AND TREECREEPERS

Varied Sittella *Daphoenositta chrysoptera*

U.BR

GBS: recorded from 5 gardens all near sizeable suburban reserves. A=0.099, F=11.86%, W=33, R=1.72%, G=5.74.

Misc: 34 non-breeding records. 2 breeding records - nb/4 Nov 'Paringa', Anembo GrR24 (LiB), dy/5 Feb UNIC GrK13 (CIG1).

White-throated Treecreeper *Climacteris leucophaea* **C.BR**

GBS: A=0.062, F=16.95%, W=44, R=5.46%, G=1.14.

Misc: 157 non-breeding records.

Red-browed Treecreeper *Climacteris erythroptera*

U.BR

Misc: 4 non-breeding records, all from Majors Creek/Tallaganda SF area except 5/17 Feb Doctors Flat Rd GrE12 (FyM). One breeding record - dy/16 Dec Lowden Forest Pk GrW19 (CIG1).

Brown Treecreeper *Climacteris picumnus*

C.BR

Misc: 50 non-breeding records.

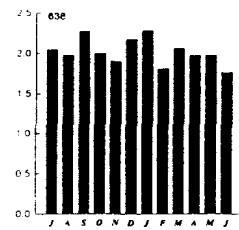
HONEYEATERS

Red Wattlebird *Anthochaera carunculata* C.BR

GBS: Present throughout the year with abundance up slightly on last year (A=2.024 vs 1.93). No real peak of sightings this year although the lowest abundance was in Jun. A=2.024, F=98.31%, W=52, R=78.00%, G=2.59.

WBS: Only two sightings 1/21 Oct and 2/21 Apr LTug (BiJ).

Misc: Recorded in all months of the year throughout the region. Only 3 breeding records, ne/16 Sep Acton GrK13 (PoH), dy/7 Oct Federal Golf Course GrJ14 (AnB) and dy/4 Nov Black Mtn GrK13 (McI). An interesting record was of 18 birds on 4 Nov nr Anembo (LiB).



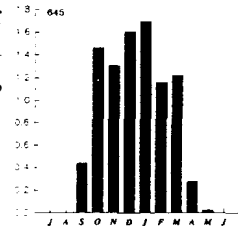
Noisy Friarbird *Philemon corniculatus*

C.BM

GBS: Abundance this year down on previous years. (A=0.761 vs around 1.00 for previous three years). There were no records for Jul, Aug or Jun. Peak records were in Dec and Jan. First record 1/1wk Sep Fisher (BiJ), last 2/2wk May Cook (DaB). A=0.761, F=89.83%, W=37, R=35.51%, G=2.14.

WBS: Two records, 3/21 Oct and 1/16 Dec LTug (BiJ).

Misc: Only 1 record in Jul - 3/26 Jul Mt Painter GrJ13 (DaB). Otherwise all records in the period from Sep to Apr, mirroring the situation in the GBS. Normally there are a few birds in winter. First record 1/9 Sep Fadden (HoJ), last 3/30 Apr Yankee Hat GrG25 (GU), with an unusual record of 24/17 Feb Wanniasa Hill GrK16 (GrB). 3 breeding records all with dependent young - 28 Oct Campbell Pk GrM13 (McI), 8 Dec Black Mm GrK13 (McI) and 3 Jan Campbell Pk (LiB).



Little Friarbird *Philemon citreogularis*

R.Va.

Misc: 2 birds seen at Murrumbateman on two occasions 16 Oct and 1 Jan (BIJ).

Regent Honeyeater *Xanthomyza phrygia*

R.BVa

Misc: 2/20 Oct Kambah (McD) and 1/12 Apr Ainslie (DCM).

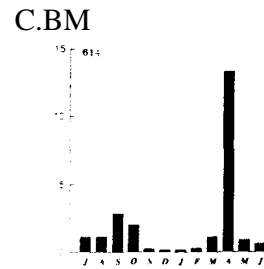
Noisy Miner *Manorina melanocephala*

C.BR

GBS: Abundance (0.176) up from last year (0.115) and climbing towards 1987/88 value of 0.201. Present all year but observations peak in Mar to Jun. A=0.176, F=16.95%, W=52, R=5.75%, G=3.06.

Misc: 35 non-breeding records in all months of the year.

Yellow-faced Honeyeater *Lichenostomus chrysops*
 GBS: Abundance up slightly on last year but still nowhere near 1987/88 level of 4.337. As usual a major peak of observation in Apr with a secondary peak in Sep/Oct. Some birds present all year. A=2.204, F=93.22%, W=52, R=33.70%, G=6.54.
 Misc: 110 records in all months, but few in Jul, Aug, May and Jun. Two breeding records (both dependent young) 13 Oct Lee's Ck GrE15 (WrH) and 1 Feb Aranda GrJ13 (WeS).



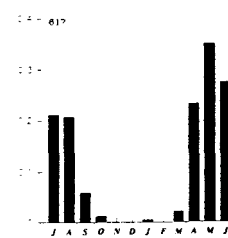
Lewin's Honeyeater *Meliphaga lewinii*
 Misc: 2/21 Aug Gungahlin Hill GrK12 (GU)

R.Va

White-eared Honeyeater *Lichenostomus leucotis*

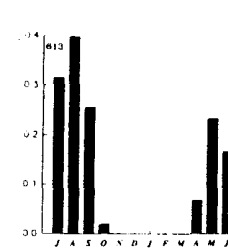
C.BR

GBS: Abundance (A) increased from 0.075 last year to 0.115 but still not as high as 1987/88 (0.137). No records from Nov to Feb inclusive. Peak observations in May/Jun. A=0.115, F=62.71%, W=31, R=9.85%, G=1.17.
 WBS: One record 2/21 April LTug (BiJ).
 Misc: Records from all months except Feb throughout the Canberra region. No breeding records.



Yellow-tufted Honeyeater *Lichenostomus melanops* R.Vi
 Misc: One record only, 1/5 Aug Cook GrJ13 (MuS).

Fuscous Honeyeater *Lichenostomus fusca* C.BR
 GBS: Abundance up from last year (0.124 vs 0.096) but still way down on 1987/88 (0.294). Peak observations in Aug but no records from Nov to Mar inclusive. A=0.124, F=44.07%, W=27, R=6.08%, G=2.03.



Misc: 8 records only of which 3 were breeding records, nb/3 Nov nr Anembo GrS24 (LiB), dy/24 Feb nr Boboyan and dy/24 Feb Orroral Valley road (both BoJ).

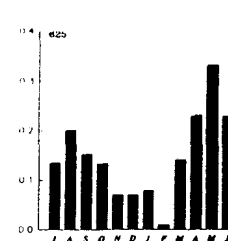
White-plumed Honeyeater *Lichenostomus penicillatus*

C.BR

GBS: Abundance this year (0.150) up from last year's low of 0.089 but still not close to 1987/88 value of 0.313. Recorded in all months but with a definite winter peak. A=0.150, F=50.85%, W=48, R=6.69%, G=2.25.

WBS: One record, 1/19 Aug LTug (GrB).

Misc: 90 records in all months of the year. One breeding record dy/20 Jan Campbell Pk GrM13 (McI). Largest recording 25/19 May Woodland S of Wm Hovell Dr GrI13 (FyM).



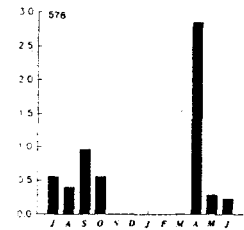
Brown-headed Honeyeater *Melithreptus brevirostris* U.BR

GBS: 10 records only at 3 sites. 3/2wk Oct and 6/1wk Jan Holt (both EGR) and a different site in Holt 1/1wk Aug and 1/2wk Aug (DaC). Also in Chapman between 1 and 8 birds in the period 3wk Jun to 1wk Aug (HAJ).

Misc: 20 records scattered throughout the year with one breeding record dy/28 Jan O'Connor Ridge GrK12 (McI).

White-naped Honeyeater *Melithreptus lunatus* C.BM

GBS: Abundance up slightly over last year (0.537 vs 0.371) but again nowhere near 1987/88 value of A=1.549. No records from Nov to Feb inclusive and very few in Mar. The major outward migration peak this year was in Apr with a smaller return migration peak in Sep. A=0.537, F=62.71%, W=32, R=8.74%, G=6.14. Misc: Recorded in all months in our region except for Dec and Jun. No breeding records.



Crescent Honeyeater *Phylidonyris pyrrhoptera* U.BR

GBS: No records from Nov to Mar inclusive with a peak of observations in Jul/Aug. A=0.087, F=18.64%, W=31, R=5.46%, G=1.60.

Misc: 9 non-breeding records only scattered throughout our region (5 rural in summer, 4 urban in winter).

New Holland Honeyeater *Phylidonyris novaehollandiae* U.BR

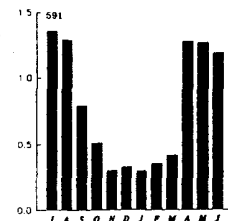
GBS: Abundance (A) similar to last two years, way down on 1984/85 level of 0.106. Records scattered throughout year but with only one record in period Aug to Nov inclusive. A=0.031, F=11.86%, W=23, R=1.35%, G=2.27.

Misc: 20 records scattered throughout the year and the Canberra region. No breeding records.

Eastern Spinebill *Acanthorhynchus tenuirostris* C.BR

GBS: Abundance (A) increased to highest in last 5 years (previous high was 0.548 in 1987/88). Usual increase in observations during winter. A=0.791, F=89.83%, W=52, R=44.95%, G=1.76.

Misc: Recorded throughout the year in COG's region. One breeding record nb/13 Oct Lee's Ck GrE15 (WrfH).



Black Honeyeater *Certhionyx niger* R.Va

Misc: First record for Canberra - 1/9 to 11 Jan Charnwood GrI11 (Prf)

CHAT, MISTLETOEBIRD, PARDALOTES AND SILVEREYE

White-fronted Chat *Ephthianura albifrons*

U.BR

WBS: Regular mainly in small numbers LBth and Morass. Max 32/23 Mar LBth E basin GrY8 (MiP).

Misc: 1 non-breeding record. 1 breeding record - cf/1 1 Nov Lake Rd GrR11 (WrH).

Mistletoebird *Dicaeum hirundinaceum*

U.BM

GBS: Records from 8 sites. Average number observed rose slightly. First record 1/2wk Sept O'Connor (APC), last 1/4wk Apr Kambah GrJ16 (VeP). A=0.024, F=13.56%, W=24, R=1.97%, G=1.23.

WBS: 1 record LGeo N.

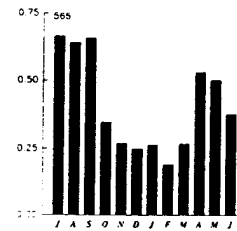
Misc: 26 non-breeding records.

Spotted Pardalote *Pardalotus punctatus*

C.BR

GBS: Records from 50 sites. Average number seen (A) declined for the fourth consecutive year. A=0.420, F=84.75%, W=52, R=29.52%, G=1.42.

Misc: 74 non-breeding records.



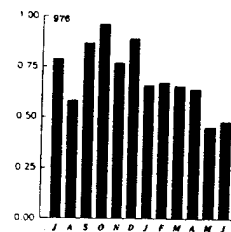
Striated Pardalote *Pardalotus striatus*

C.BR

GBS: Records from 48 sites. Average number observed (A) increased after declines in previous three years. A=0.707, F=81.36%, W=52, R=37.19%, G=1.90.

WBS: 2 records LBth, LTug.

Misc: 123 non-breeding records. 3 breeding records - ih/18 Oct Black Mm peninsula GrK13 (GIJ), cf/20 Nov Nursery Swamp GrH23 (GU), ih/1 Jan Campbell Pk GrM13 (WrH).



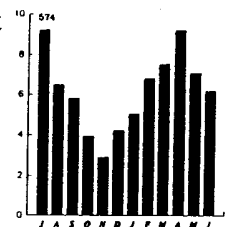
Silvereye *Zosterops lateralis*

C.BM

GBS: Records from 57 sites. Seasonal pattern similar to previous years with lower average numbers observed in late spring than a other times of year. All values somewhat higher than last year. A=6.249, F=96.61%, W=52, R=72.37%, G=8.63.

WBS: 4 records from LTug (2), LBth, LGeo.

Misc: 101 non-breeding records.



FINCHES AND SPARROW

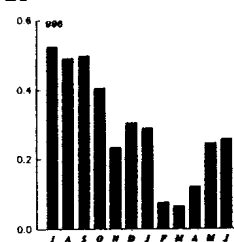
European Goldfinch *Carduelis carduelis*

GBS: The average number observed is down this year compared both to 1988-89 (A.39) and 1989-90 (A=0.36). A=0.299, F=61.02%, W=49, R=10.59%, G=2.82.

WBS: Eleven records at LTug and LBth.

Misc: Recorded on 25% of data sheets. One breeding record - cf/8 Nov "Tombonda" Hs GrL15 (LeB).

C.BR



European Greenfinch *Carduelis chloris*

Misc: Seven records, five near the Cork Oak plantation at Glenloch, e.g. 3/16 Sep Yarramundi Bay GrJ14 (PoH), and 3/17 Feb Wanniasa Hill GrK16 (GrB), 4/19 May Smiths Gap GrR12 (LeB).

R.BR

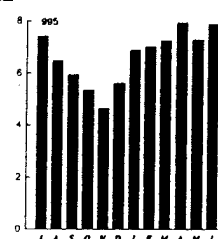
House Sparrow *Passer domesticus*

GBS: Pattern of monthly observation unchanged, average number observed is marginally down compared with 1989-90 (A=7.07). A=6.66, F=96.6%, W=52, R=76.03%, G=8.75.

WBS: Six records at LTug, one at LGeo.

Misc: Recorded on 16% of data sheets, mostly urban except: 1/30 Sep Jerrawa Ck GrM3 (NiA).

C.BR



Red-browed Firetail *Emblema temporalis*

GBS: Average number seen has increased compared to 1988-89 (A=0.17) and 1989-90 (A=0.20). A=0.48, F=33.90%, W=43, R=5.67%, G=8.48.

Misc: Recorded on 21% of data sheets. First breeding record - nb/14 Nov Isaacs Ridge GrK15 (HoA), last - dy/17 Feb Doctor's Flat rd GrE12 (FyM).

C.BR

Diamond Firetail *Emblema guttata*

WBS: One record - 1/19 Aug LTug GrJ16 (GrB).

Misc: Widely distributed, e.g. 8/11 Nov East of Theodore GrL17 (GrB), B/20 Apr Big Hole GrX24 (LuN). No breeding records this year.

U.BR

Double-barred Finch *Poephila bichenovii*

GBS: Average number seen is similar to last year (A=0.06), which is a decline compared to 1988-89 (A=0.12). A=0.059, F=13.56%, W=31, **R=1.60%**, G=3.67.

WBS: Five records, e.g. 6/30 Jun LTug GrJ16 (HoJ)

Misc: Widely distributed, e.g. 4/7 Apr Yalgum Ck GrQ14 (GrB), I/16 Sep Red Hill GrK14 (WrfH).

U.BR

STARLING, MYNA, ORIOLE, DRONGO, BOWERBIRD AND MUDNESTERS

Common Starling *Sturnus vulgaris*

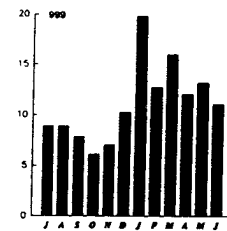
C.BR

GBS: The average number has returned to a level typical of previous years (e.g. 1989-89: A=12.02), but significantly greater than last year (A=8.826). A=11.097, F=98.3%, W=52, R=81.4%, G=13.62

WBS: 30 records. Present at all lakes surveyed: LTug, LGeo, LBth including The Morass.

Misc: Recorded on 44% of data sheets. Breeding: ny/3 Nov Mt Painter GrJ13 (DaB), ny/8 Nov "Tombonda" Hs GrL15 (LeB),

cf/24 Nov Campbell Pk GrM13 (LiB).



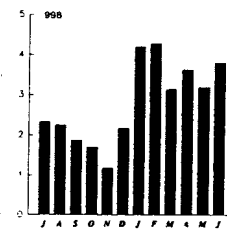
Common Myna *Acridotheres tristis*

C.BR

GBS: The average number seen (A) continues to rise (1988-89 - 1.16; 1989-90 - 1.72); and the Common Myna is also becoming more widespread within the sites surveyed (F) each year (1988-89 - 44.3%; 1989-90 - 52.5%). A=2.79, F=54.24%, W=52, R=39%, G=7.16.

WBS: One record: A/9 Mar LGeo GrR6 (LeM).

Misc: Recorded on 5.8% of data sheets, mostly urban and semi-rural areas e.g. C/19 Jan Red Hill GrK14 (WrH), 2/6 Dec Oakev Hill GrJ15 (JoD), 2/26 May Junction Thuralilly St./King's Hwy, Queanbeyan GrN15 (LeB). Breeding: ih/29 Aug East Duffy GrI15 (PoH).

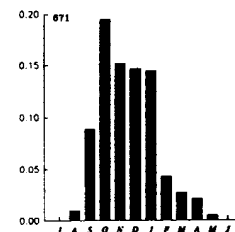


Olive-backed Oriole *Oriolus sagittatus*

U.BM

GBS: A=0.071, F=44.07%, W=34, R=6.28%, G=1.13.

Misc: 19 non-breeding records. First 1/16 Aug Black Mtn Peninsula GrK13 (PoH) (early), last 1/24 Feb Boboyan Pine Forest GrH25 (BoJ) (very early).



Satin Bowerbird *Ptilonorhynchus violaceus*

U.BR

GBS: 69 records from 9 sites (almost identical to 1989-90), as previously in Weston Creek (Chapman, Duffy, Fisher and notably Waramanga) and also Yarralumla. Max 8/2wk Jul and 1wk Aug Duffy GrI15 (PoH). A=0.067, F=15.25%, W=34, R=2.83%, G=2.35.

Misc: 9 non-breeding records. One breeding record - di/18 Nov Tidbinbilla NR GrF18 (GU).

White-winged Chough *Corcorax melanorhamphos*

C.BR

GBS: All values up slightly on 1989-90, including average number seen (A), which approaches 1988-89 levels. Seasonal pattern similar. A=0.286, F=32.20%, W=45, R=4.35%, G=6.58.

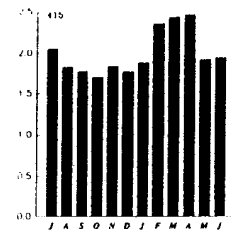
Misc: 72 non-breeding records. 6 breeding records, including ny/18 Nov Mundoonen NR GrJ3 (LeB), ny/6 Dec Oakey Hill Nature Pk GrJ15 (JoD).

Australian Magpielark *Grallina cyanoleuca*

C.BR

GBS: Average number seen (A) and recording rate (R) both rose noticeably, giving the highest values since these statistics have been recorded (1984-85). Other values and seasonal pattern unchanged. First n/2wk Aug Ainslie GrL13 (LeM), last n/1wk Dec ANU Campus GrK13 (PoH). A=2.00, F=100%, W=52, R78.9%, G=253.

WBS: 32 non-breeding records. 2 breeding records, one each at LGeo GrR11 and LBth.



Misc: 192 non-breeding records. 8 breeding records.

WOODSWALLOWS

Masked Woodswallow *Artamus personatus*

R.Vi

Misc: 3/18 Dec Mt Ainslie E GrM13 (LeM).

Whitebrowed Woodswallow *Artamus superciliosus*

U.BM

Misc: Small number of records after following an absence during 1989-90. 5 non-breeding records, including one from an unusually high altitude - B/30 Apr Yankee Hat Namadgi NP GrG25 (GIJ). 3 breeding records - on/1 Jan Campbell Pk GrM13 (WrH), dy/20 Jan Campbell Pk (McI) and ny/26 Jan Kowen GrR14 (KrS).

Dusky Woodswallow *Artamus cyanopterus*

C.BM

GBS: All values similar to 1989-90. First 53/2wk Sep O'Connor GrK13 (APC) (unusual), last 1/1wk Jun Fraser Gill 1 (PeJ) (very late). A=0.92, F=16.95%, W=21, R=1.03%, G=9.00.

WBS: 2 non-breeding records, one each from LGeo GrR11 and LBth.

Misc: 57 non-breeding records. 8 breeding records including ne/3 Nov "Paringa", Anembo GrS24 (LiB) and nb/4 Nov near "Paringa", Anembo GrR24 (LiB).

BUTCHERBIRDS, MAGPIE AND CURRAWONGS

Grey Butcherbird *Cracticus torquatus*

U.BR

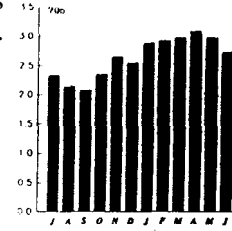
GBS: 1/1wk Mar Garran GrK15 (A1R), 1/2wk Oct Cook GrJ13 (BaI). A=0.001, F=3.39%, W=2, R=0.08%, G=1.00.

Misc: 21 non-breeding records.

Australian Magpie *Gymnorhina tibicen*

C.BR

GBS: as in previous years, little or no change observed, except values for average number seen (A) and recording rate (R) are slightly higher. Seasonal pattern remarkably consistent. First n/3wk Jul Ainslie GrL13 (LeM), last n/1wk Nov Fisher GrJ15 (BiJ). First dy/2wk Oct Chapman (HAD, last dy/2wk Jan Campbell (RoC). A=2.635, F=100%, W=52, R=86.49%, G=3.05. **WBS:** 34 non-breeding records. 1 breeding record - dy/28 Oct LBth GrY8 (CrI).



Misc: 259 non-breeding records. 24 breeding records including nb/11 Jul near Yowani Country Club GrL12 and K12 (LeB) and nb/20 Aug Brandy Flat/Booths Ck GrI24 (DCM).

Pied Currawong *Strepera graculina*

C.BR

GBS: average number seen (A) up slightly on previous two years, other values and seasonal pattern unchanged. First n/2wk Sep Kambah (VeP), last n/2wk Nov Aranda (HaK). First dy/5wk Oct Macquarie (CoD), last dy/1wk Feb Holt (EGR). A=4.591, F=100%, W=52, R=82.59%, G=5.56. **WBS:** 2 non-breeding records, both LTug. **Misc:** 159 non-breeding records. 5 breeding records including ny/18 Nov Mundoonen NR GrJ3 (LeB).

Grey Currawong *Strepera versicolor*

C.BR

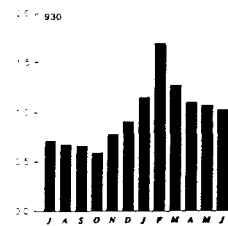
GBS: recorded mainly from gardens near areas of suburban bushland. All values up on 1989-90 except average number seen (A) and group size (G); seasonal pattern largely unchanged. Only breeding record - n/3wk Oct O'Connor (APC). A=1.053, F=42.37%, W=51, R=4.52%, G=1.18. **Misc:** 44 non-breeding records. 2 breeding records - nb/4 Aug Stromlo Forest Trail-bike track GrI14 (BIJ) and cf/28 Oct Isaacs Ridge GrK15 (HoA).

RAVENS

Australian Raven *Corvus coronoides*

C.BR

GBS: average number seen (A) continues to rise, maintaining trend of last 3 years (1989-90 - 0.783, 1990-91 - 0.995). Other values and seasonal pattern similar. First dy/1wk Oct Ainslie (LeM), last dy/4wk Nov Aranda (WeS). A=0.955, F=98.31%, W=52, R=46.80%, G=2.04. **WBS:** 19 non-breeding records. **Misc:** 200 non-breeding records. 4 breeding records - on/15 Sep Oakev Hill Nature Pk GrJ15 (WrH). dv/27 Oct "Bibaringa" Hs GrH15 (WrH), on 11 Nov near "Glenrock" Hs GrV21 (LeB) and dy/12 Nov Macs Reef Rd GrO1 1 (LeB).



Little Raven *Corvus mellori*

U.BR

GBS: records from 7 sites, max 120/3wk Jan Chapman GrI15 (HAJ). A=0.121, F=11.86%, W=10, R=0.49, G=24.50.

WBS: 14 non-breeding records, all from LBth.

Misc: 22 non-breeding records. Unusual local breeding record: dy/19-20 Nov Nursery Swamp Namadgi NP GrH23 (**GU**).

APPENDIX 3. Addendum to the 1989-90 Annual Bird Report: Garden Bird Survey values.

In the Annual Bird Report for 1989-90 (1992, Canberra Bird Notes 17: 17-71) the values of A, F, W, R, and G were given for only the 64 commonest species recorded in the Garden Bird Survey. In previous Annual Bird Reports the practice was to provide these data for all species recorded in the Garden Bird Survey. So that the values for all species for a number of years may be compared, this practice will again be continued. In order to complete the data set, the values of A, F, W, R, and G for all species recorded in the Garden Bird Survey in 1989-90, together with the percentage change in these values when compared with the 1988-89 data (dA, dF, dW, dR), are listed below. The species are sorted in descending order, using the A statistic, giving a list with the most abundant species appearing first.

Species Name	A	dA%	F	dF%	W	dW%	R	dR%	G
Common Starling	8.8259	-13	96.7	-3	52	0	75.59	9	11.7
House Sparrow	7.0673	-14	96.7	0	52	0	72.68	-5	9.7
Silvereye	5.4264	-7	95.1	-1	52	0	68.31	2	7.9
Galah	5.1469	-7	98.4	2	52	0	70.21	1	7.3
Pied Currawong	4.1840	-4	100.0	2	52	0	80.97	10	5.2
Sulphur-crested Cockatoo	3.5833	18	96.7	0	52	0	61.40	20	5.8
Crimson Rosella	2.9088	18	100.0	0	52	0	80.38	6	3.6
Australian Magpie	2.8135	8	100.0	0	52	0	83.15	3	3.4
Red Wattlebird	1.9256	23	95.1	-1	52	0	76.79	10	2.5
Yellow-faced Honeyeater	1.8614	-3	91.8	-1	52	0	30.94	1	6.0
Blackbird	1.8371	-6	95.1	4	52	0	74.25	2	2.5
Australian Magpie-lark	1.7661	21	100.0	4	52	0	69.28	14	2.5
Common Myna	1.7242	43	52.5	13	52	0	33.37	28	5.2
Yellow-rumped Thornbill	1.6211	-1	91.8	1	52	0	40.06	8	4.0
Eastern Rosella	1.4197	14	100.0	8	52	0	55.38	8	2.6
Australian King-Parrot	1.3681	69	72.1	-4	52	0	28.40	21	4.8
Noisy Friarbird	0.8683	3	98.4	6	48	14	38.45	10	2.3
Australian Raven	0.7825	5	91.8	7	52	0	40.70	6	1.9

	0.7485	24	70.5 -1	5	0	24.55	19	3.0
Superb Fairy-wren								
Black-faced Cuckoo-shrike	0.6842	2	95.1 -5	5	0	39.35	0	1.7
Weebill	0.6824	10	59.0 18	5	0	24.40	11	2.8
Silver Gull	0.6147	112	6.6 -39	1	0	0.71	4	86.6
Feral Pigeon	0.5837	46	54.1 1	5	0	12.03	28	4.9
Striated Pardalote	0.5729	-13	70.5 -4	5	0	27.84	-6	2.1
Eastern Spinebill	0.5646	20	86.9 -1	5	0	33.48	15	1.7
Gang-gang Cockatoo	0.5086	69	75.4 21	5	8	17.08	58	3.0
Spotted Pardalote	0.4533	-31	78.7 -10	5	0	29.67	-17	1.5
Grey Fantail	0.4279	17	83.6 0	5	2	27.06	16	1.6
Laughing Kookaburra	0.3767	-5	70.5 -10	5	0	20.67	1	1.8
White-naped Honeyeater	0.3714	-44	62.3 0	3	0	6.20	-36	6.0
European Goldfinch	0.3567	-8	62.3 3	5	2	11.32	-5	3.2
Red-rumped Parrot	0.3565	7	32.8 -20	5	0	7.21	-7	4.9
Willie Wagtail	0.3513	54	86.9 4	5	0	25.30	39	1.4
Brown Thornbill	0.2972	51	41.0 9	5	0	14.39	30	2.1
Welcome Swallow	0.2672	35	44.3 3	4	0	7.29	10	3.7
Red-browed Firetail	0.2363	25	31.1 16	4	8	4.48	15	5.3
White-winged Chough	0.1860	-38	29.5 27	4	5	2.84	-16	6.6
Striated Thornbill	0.1603	-22	44.3 3	5	0	5.61	-14	2.9
White-throated Needletail	0.1517	-60	34.4 7	1	20	1.46	37	10.4
Golden Whistler	0.1465	9	52.5 5	4	2	11.70	9	1.3
Rufous Whistler	0.1457	-16	68.9 4	5	0	11.51	-18	1.3
Straw-necked Ibis	0.1177	1054	4.9 -9	1	140	0.49	133	24.2
Noisy Miner	0.1155	22	23.0 17	4	-4	3.70	-2	3.1
Maned Duck	0.1099	44	21.3 -25	3	-10	2.17	-37	5.1
White-browed Scrubwren	0.1084	34	23.0 17	5	9	6.09	37	1.8
Fuscous Honeyeater	0.0960	-51	37.7 -22	2	-21	5.04	-27	1.9
Tree Martin	0.0938	2081	8.2 356	1	450	0.41	356	22.8
Dollarbird	0.0897	39	42.6 33	2	0	5.83	37	1.5
White-plumed Honeyeater	0.0893	-46	47.5 -8	4	-19	4.93	-40	1.8
Masked Lapwing	0.0755	21	37.7 6	5	16	4.82	15	1.6
Buff-rumped Thornbill	0.0755	-13	16.4 -23	3	-7	2.54	-23	3.0
White-eared Honeyeater	0.0747	-9	54.1 -11	2	-12	6.24	-7	1.2
Satin Bowerbird	0.0723	576	14.8 108	3	311	2.54	491	2.9
Grey Shrike-thrush	0.0695	21	32.8 -13	4	12	6.28	12	1.1
Scarlet Robin	0.0673	-36	44.3 8	3	-25	4.22	-40	1.6
Grey Currawong	0.0628	-17	29.5 -8	49	-6	5.23	-15	1.2
Sacred Ibis	0.0620	155	4.9 -9	1	133	0.71	109	8.7
Double-barred Finch	0.0590	61	21.3 139	27	29	1.53	44	3.9
Crescent Honeyeater	0.0568	71	24.6 25	25	14	3.70	20	1.5
Olive-backed Oriole	0.0523	16	36.1 6	36	-10	4.41	-1	1.2
Varied Sittella	0.0508	-18	6.6 -7	21	-13	0.86	-28	5.9
White-throated Treecreeper	0.0501	-50	19.7 -15	48	-8	4.22	-50	1.2
Southern Boobook	0.0475	26	34.4 -12	46	24	3.96	5	1.2
Speckled Warbler	0.0396	-8	3.3 -54	47	15	1.79	-16	2.2
Little Raven	0.0392	51	14.8 173	14	600	0.60	362	6.6
Brown-headed Honeyeater	0.0366	-33	8.2 356	26	8	1.23	21	3.0
Tawny Frogmouth	0.0340	-37	8.2 356	39	-15	1.61	-18	2.1
Pallid Cuckoo	0.0333	-9	32.8 -17	23	-4	2.91	-8	1.1
Australian Hobby	0.0299	40	36.1 44	3	33	2.54	27	1.2
Dusky Woodswallow	0.0295	NA	18.0 NA	18	NA	0.82	NA	3.6
Leaden Flycatcher	0.0258	-16	23.0 -1	20	-9	1.98	-14	1.3
Zebra Finch	0.0232	102	3.3 -8	26	53	0.97	33	2.4
Black-shouldered Kite	0.0224	31	18.0 44	33	18	1.94	23	1.2
Fan-tailed Cuckoo	0.0213	-11	21.3 -8	31	0	1.91	-19	1.1
Australian Kestrel	0.0213	4	26.2 13	36	20	1.83	-7	1.2
Mistletoebird	0.0191	-52	13.1 -27	27	-7	1.64	-49	1.2
Brown Goshawk	0.0187	68	29.5 27	30	36	1.83	65	1.0
White-throated Gerygone	0.0187	-43	27.9 56	26	-13	1.87	-38	1.0
New Holland Honeyeater	0.0183	-12	9.8 82	19	12	0.86	6	2.1
White-faced Heron	0.0179	198	11.5 61	23	92	1.01	98	1.8
Rainbow Lorikeet	0.0179	-47	6.6 -47	21	-16	0.82	-48	2.2
Crested Pigeon	0.0161	-26	16.4 53	29	38	1.23	37	1.3
Shining Bronze-Cuckoo	0.0153	9	18.0 26	25	14	1.53	9	1.0
Flame Robin	0.0149	104	9.8 39	18	125	0.90	165	1.7
Sacred Kingfisher	0.0131	-39	21.3 -25	17	-23	1.12	-44	1.2
Rose Robin	0.0127	312	18.0 103	22	175	1.08	130	1.2

	0.0120	28	13.1	23	21	5	1.12	19	1.1
Western Gerygone									
Little Corella	0.0112	NA	3.3	NA	12	NA	0.45	NA	2.5
Common Bronzewing	0.0105	-50	6.6	-7	23	-28	0.93	-41	1.1
Golden-headed Cisticola	0.0101	NA	3.3	NA	24	NA	0.90	NA	1.1
Horsfield's Bronze-Cuckoo	0.0093	-25	13.1	-27	16	-20	0.90	-22	1.0
Pacific Black Duck	0.0086	-23	1.6	-70	8	-20	0.30	-30	2.9
Little Eagle	0.0086	43	6.6	-39	14	17	0.56	10	1.5
Grey Butcherbird	0.0086	562	6.6	23	15	400	0.64	392	1.4
Great Cormorant	0.0078	359	1.6	-56	6	100	0.22	69	3.5
Collared Sparrowhawk	0.0067	-74	14.8	-36	14	-60	0.64	-65	1.1
White-winged Triller	0.0064	146	3.3	-54	13	160	0.52	100	1.2
Whites Thrush	0.0059	NA	1.6	NA	6	NA	0.22	NA	2.7
Wedge-tailed Eagle	0.0056	87	11.5	29	10	100	0.41	58	1.4
Brown Falcon	0.0052	-39	4.9	-66	10	-33	0.37	-52	1.4
Rufous Fantail	0.0052	-13	16.4	53	9	-10	0.49	-4	1.1
Yellow Thornbill	0.0052	-35	6.6	22	5	-55	0.22	-53	2.3
Diamond Firetail	0.0052	NA	1.6	NA	2	NA	0.07	NA	7.0
Australian Pelican	0.0045	-63	4.9	-54	5	-38	0.19	-44	2.4
Cattle Egret	0.0037	NA	1.6	NA	2	NA	0.07	NA	5.0
Satin Flycatcher	0.0037	76	8.2	52	5	0	0.22	5	1.7
Restless Flycatcher	0.0034	-33	8.2	-8	6	-45	0.26	-49	1.3
Eastern Yellow Robin	0.0034	62	6.6	22	8	60	0.30	43	1.1
Peregrine Falcon	0.0026	-13	6.6	-26	5	-17	0.19	-27	1.4
Common Koel	0.0026	189	6.6	83	5	150	0.19	111	1.4
Little Black Cormorant	0.0022	NA	1.6	NA	1	NA	0.04	NA	6.0
Rainbow Bee-eater	0.0019	-77	4.9	-54	2	-67	0.11	-63	1.7
Cockatiel	0.0019	-56	3.3	-63	2	-67	0.07	-79	2.5
Budgerigar	0.0019	111	4.9	36	5	150	0.19	111	1.0
Regent Honeyeater	0.0010	NA	3.3	NA	2	NA	0.07	NA	1.5
Darter	0.0007	NA	1.6	NA	2	NA	0.07	NA	1.0
Pacific Heron	0.0007	NA	3.3	NA	2	NA	0.07	NA	1.0
Whistling Kite	0.0007	NA	3.3	NA	2	NA	0.07	NA	1.0
Brush Cuckoo	0.0007	NA	3.3	NA	2	NA	0.07	NA	1.0
Fairy Martin	0.0007	-86	1.6	-8	1	-80	0.04	-81	2.0
Jacky Winter	0.0007	NA	1.6	NA	1	NA	0.07	NA	2.0
Yellow-tufted Honeyeater	0.0007	-86	3.3	-39	2	-82	0.07	-85	1.0
Little Pied Cormorant	0.0004	-69	1.6	-56	1	-67	0.04	-67	1.0
Great Egret	0.0004	NA	1.6	NA	1	NA	0.04	NA	1.0
Sleek Swan	0.0004	NA	1.6	NA	1	NA	0.04	NA	1.0
Grey Teal	0.0004	NA	1.6	NA	1	NA	0.04	NA	1.0
Musk Lorikeet	0.0004	NA	1.6	NA	1	NA	0.04	NA	1.0
Australian Owllet-nightjar	0.0004	-89	1.6	-56	1	-89	0.04	-89	1.0
White-bellied Cuckoo-shrike	0.0004	-69	1.6	-56	1	-67	0.04	-69	1.0
Skylark	0.0004	-69	1.6	-11	1	-50	0.04	-56	1.0
Clamorous Reed Warbler	0.0004	NA	1.6	NA	1	NA	0.04	NA	1.0
Little Friarbird	0.0004	NA	1.6	NA	1	NA	0.04	NA	1.0

(Continued from inside front cover)

<i>Publications</i>	Tony Lawson	264 3125 288 9430
<i>Records Officer</i>	Malcolm Fyfe	254 3310
<i>Shopfront Managers</i>	Wally Brown	
	Gwen Hartican	281 3622
<i>Waterbird Survey,</i> <i>Coordinator</i>	Michael Lenz	246 4143 249 1109

Computer Management Subcommittee:

David McDonald (Secretary - 231 8904), Ian Baird, Grahame Clark, Tony Harding, Ken MacLeay, Reid McLachlan, Ian McMahon.

Conservation Subcommittee:

Bruce Lindenmayer (Convener - 288 5957), Ian Fraser, Bill Handke, David Pfanner, Philip Veerman.

Field Trips Subcommittee.

Jenny Bounds (Convener - 288 7802), John Avery, David McDonald.

Projects Subcommittee:

Malcolm Fyfe (Secretary - 254 3310), Chris Davey, Michael Lenz, Nick Nicholls, David Purchase.

Rarities Panel:

Sarah Martin (Secretary - 281 3574), Barry Baker, Grahame Clark, Mark Clayton, Brendan Lepschi, Bruce Male.

Records and Library Subcommittee:

Malcolm Fyfe, Graham Browning.

Shopfront Management Subcommittee:

Jenny Bounds (Convener - 288 7802), Wally Brown, Bob Ecclestone (FNAC), Bruce Lindenmayer, Gwen Hartican, John Wombey (ACTHA).

Production and distribution of *Canberra Bird Notes*:

Typing: Louise Russell

Camera-ready Copy: Cedric Bear

Printing: Lowes - Printer

Distribution: Ann McKenzie and helpers

Annual Subscriptions for 1993 are: Student (18 years of age and younger) \$10.00; Individual \$20.00; Family \$24.00; Institutions \$24.00. All receive one copy of *Canberra Bird Notes*.

Canberra Bird Notes is published quarterly by the Canberra Ornithologists Group. Contributions are welcome. These should fit into one of the following categories: major articles (up to about 3000 words); short notes and "Odd Obs" (up to about 300 words); reviews of books and articles (up to about 500 words); and where to watch birds (up to about 800 words). The articles and notes should cover matters of the distribution, identification, and behaviour of birds in the Australian Capital Territory and surrounding area (i.e. New South Wales coast north to Jervis Bay, and west to the Riverina). Contributions can be sent to the editors c/o David Purchase, 5 Orchard Place, Melba, ACT 2615 (Tel 258 2252).

Annual Bird Report: 1 July 1990 To 30 June 1991

Canberra Ornithologist Group

Introduction	53
Highlights of the Year	53
Rainfall and Temperature	56
Garden Bird Survey	57
Waterbird Survey	61
Miscellaneous Records	61
Acknowledgements	62
References	62
Appendix 1 (Explanatory Notes, Statistical Methods, Abbreviations, and Observer Codes)	63
Appendix 2 (Systematic List)	68
Appendix 3 (Addendum to the 1989-90 Annual Bird Report: Garden Bird Survey Values)	106

(Issued January 1994)