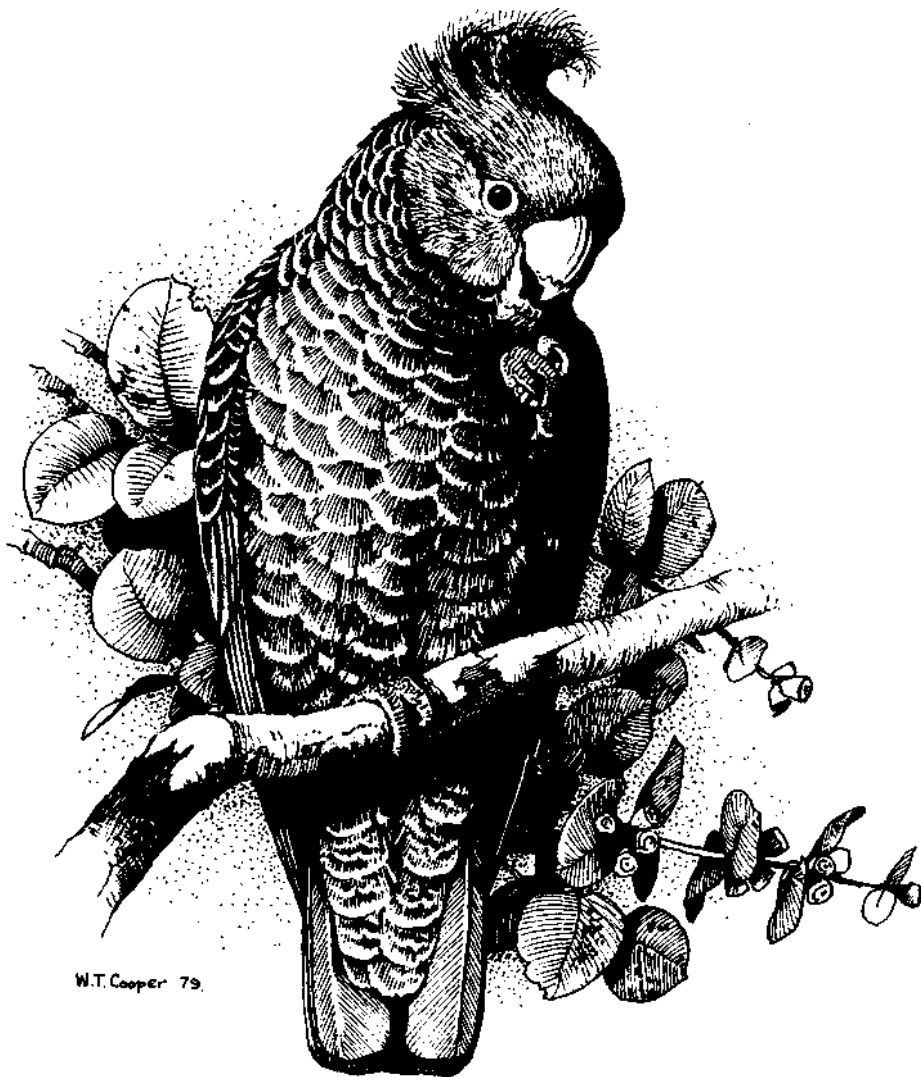


CANBERRA BIRD NOTES

Volume 17
Number 2
June 1992

Registered by Australia Post - publication No NBH 0255



CANBERRA ORNITHOLOGISTS GROUP INC.

P.O. Box 301. Civic Square, ACT 2608

Committee Members (1992)

		Work	Home
<i>President</i>	Bruce Lindenmayer	288 5957	288 5957
<i>Vice-President</i>	Jenny Bounds		288 7802
<i>Secretary</i>	Robyn Elliott	272 3172	254 5700
<i>Assistant Secretary</i>	Grahame Elliott	276 0107	254 5700
<i>Treasurer</i>	Noel Luff	245 6240	288 3291
<i>Editor, Canberra Bird Notes</i>	David Purchase	258 2252	258 2252
<i>Assistant Editor, Canberra Bird Notes</i>	Grahame Clark		254 1279
<i>Editor, Gang-Gang Publications</i>	Barbara Allan	277 3532	254 6520
<i>Exhibitions</i>	Tony Lawson	264 3125	288 9430
<i>Member</i>	Ann McKenzie		288 0167
	Richard Schodde	242 1693	281 3732

The following people represent Canberra Ornithologists Group in various ways although they may not be formally on the Committee:

<i>ADP Support</i>	Cedric Bear		258 3169
<i>Australian Bird Count</i>	Chris Davey	242 1600	254 6324
<i>Barren Grounds Representative</i>	Tony Lawson	264 3125	288 9430
<i>Conservation Council Representatives</i>	Bruce Lindenmayer		288 5957
	David Pfanner		247 7572
	Philip Veerman		231 4041
<i>Database Manager</i>	Ian Baird	242 1600	248 5424
<i>Librarian</i>	Graham Browning		288 9450
<i>Records Officer</i>	Malcolm Fyfe		254 3310
<i>Shopfront Coordinator</i>	Sarah Thomas		281 4982

Conservation Subcommittee:

Bruce Lindenmayer (Convener - 288 5957), Bill Handke, David Pfanner,
Jo Vandermark

Fund Raising and Membership Subcommittee:

Noel Luff (Convener - 288 3291), Jenny Bounds, Sue Webb

(Continued inside back cover)

ANNUAL BIRD REPORT: 1 JULY 1989 TO 30 JUNE 1990

Canberra Ornithologists Group

Introduction

This Annual Bird Report summarises all records of species that occurred in the Canberra region between 1 July 1989 and 30 June 1990.

The "Canberra region" is defined in "A Field List of the Birds of Canberra and District" (Canberra Ornithologists Group 1985). This was the area on which Canberra Ornithologists Group (COG) focussed its interest until the end of 1989.

With the commencement of the COG Database Project at the beginning of 1990, the boundaries of the region were redrawn along lines of longitude (148 40' to 149 45' E.) and latitude (34 45' to 36 00' S.) (see Figure 1).

There were 211 species recorded during the twelve month period to 30 June 1990. All records for Status 3 species, as defined in "A Field List of the Birds of Canberra and District" (Canberra Ornithologists Group 1985), included in this report, have been examined and endorsed by the COG Rarities Panel. A number of sightings involving ten Status 3 species, were not submitted to the Rarities Panel by the observers and so, without endorsement, cannot be included in this report.

During the ACT Avifauna Database ("Atlas") project (1 September 1986 to 31 August 1989), 242 enthusiasts carried out survey work, throughout the ACT, on a scale never before undertaken by COG. The exercise produced a large volume of data which became an important source of information for Annual Bird Reports covering the period. Following completion of the "Atlas" some 30 members have continued to undertake survey work on a regular basis.

Highlights of the Year

The highlights of the 1989-1990 year in the Canberra region included the following:

- * The first sightings since 1978 of Australasian Bitterns *Botaurus poiciloptilus*
- * The first sightings since 1985 of Glossy Ibises *Plegadis falcinellus*
- * The first sighting since 1979 of the Bar-tailed Godwit *Limosa lapponica*
- * The first sightings since 1962 of White-winged Terns *Chlidonias leucoptera*

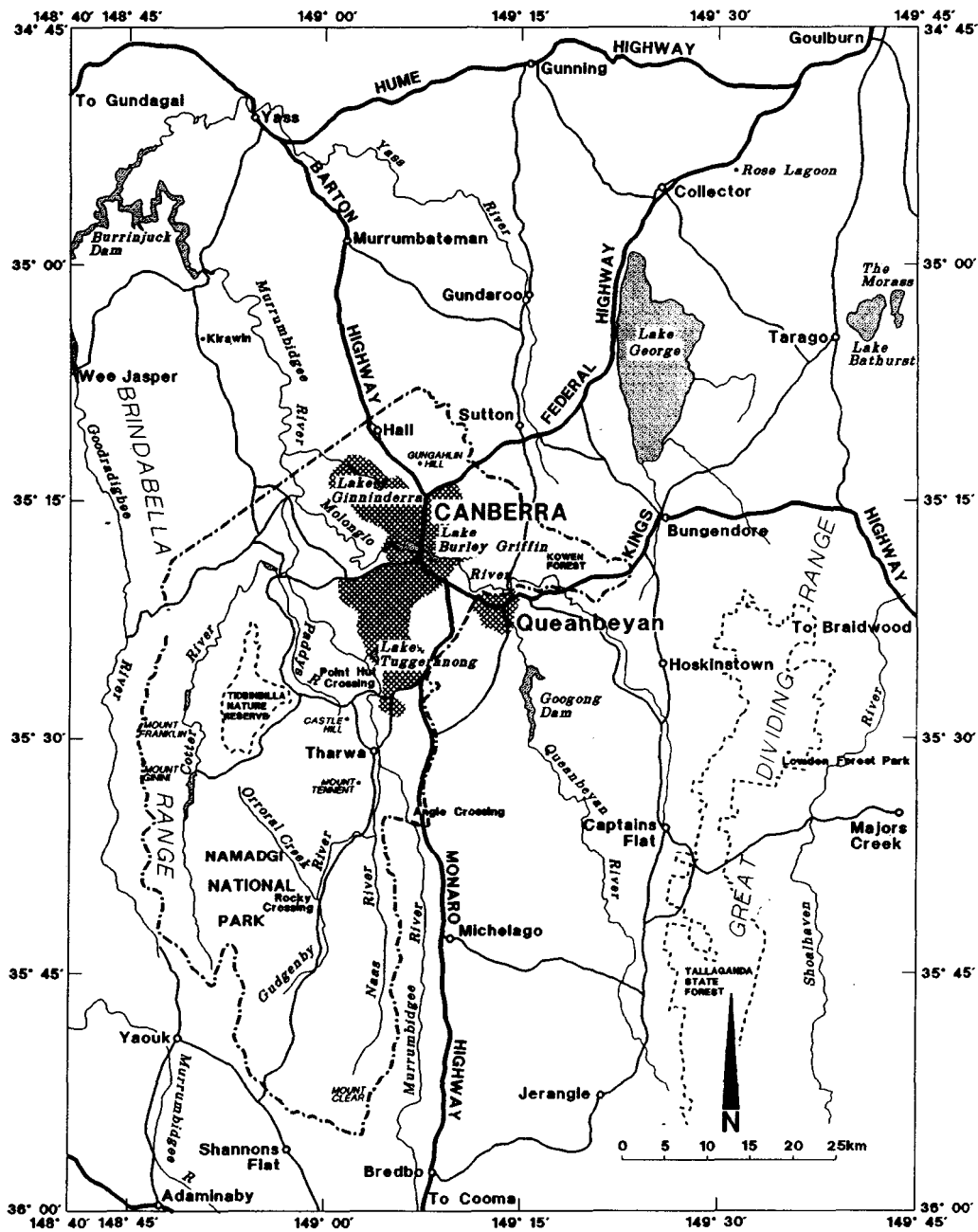


Figure 1. The Canberra region.

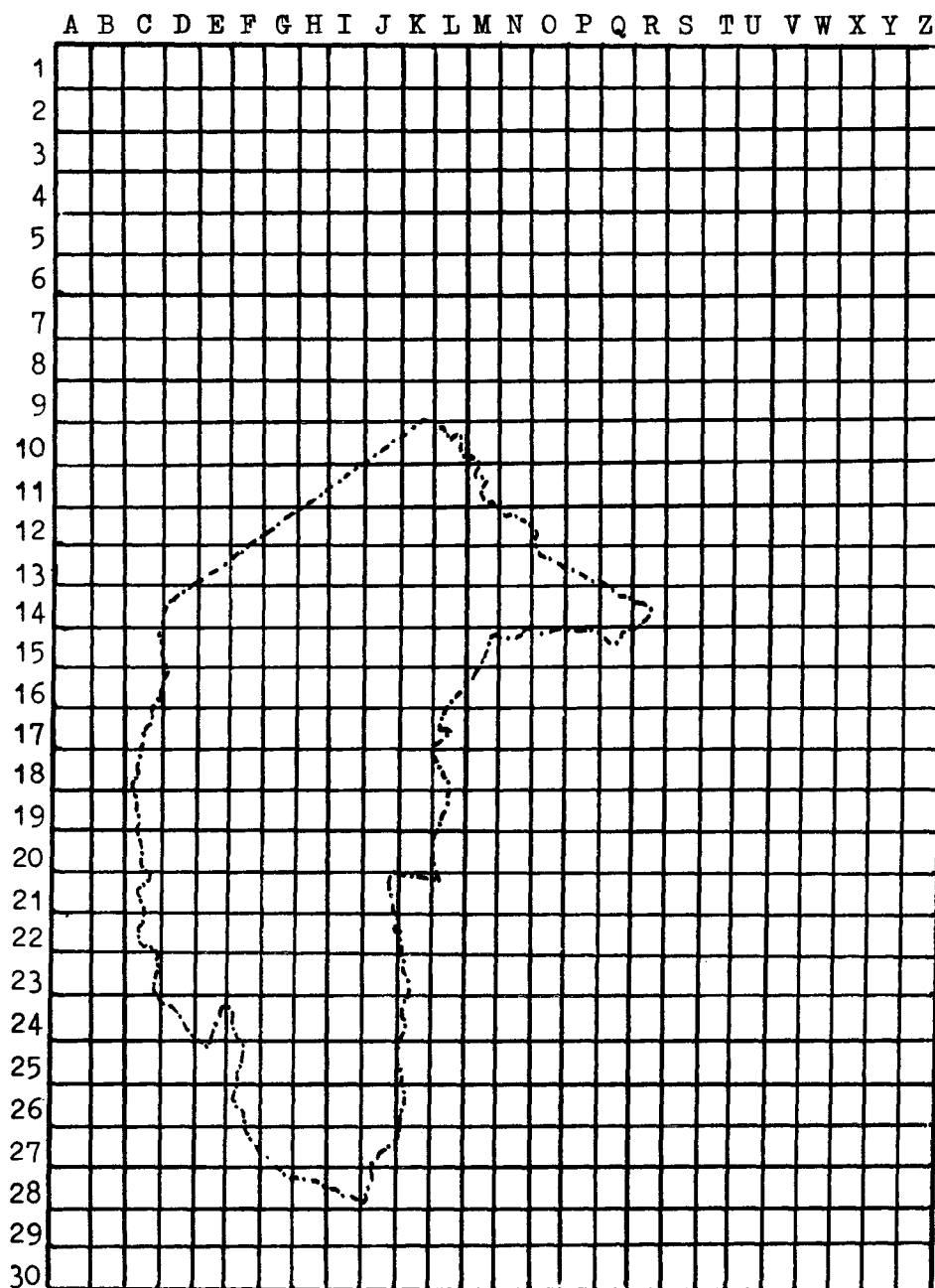


Figure 2. Location of the COG Database grids.

- * A large increase in the numbers and distribution of Satin Bowerbirds *Ptilonorhynchus violaceus* in suburban areas
- * The absence of any records of either the Masked Woodswallow *Artamus personatus* or the White-browed Woodswallow *Artamus superciliosus* following good numbers in 1988-89.

Rainfall and Temperature

The total rainfall for the year was 654 mm, which is slightly above the long-term average of 630 mm, but considerably less than the previous year's total of 968 mm (see Figure 3). November with 136.2 mm and April with 137.6 mm, both had over twice the long-term average of 62.9 mm and 53.2 mm respectively. March was unusually dry with only 6.2 mm of rain compared with the long-term average of 55.8 mm.

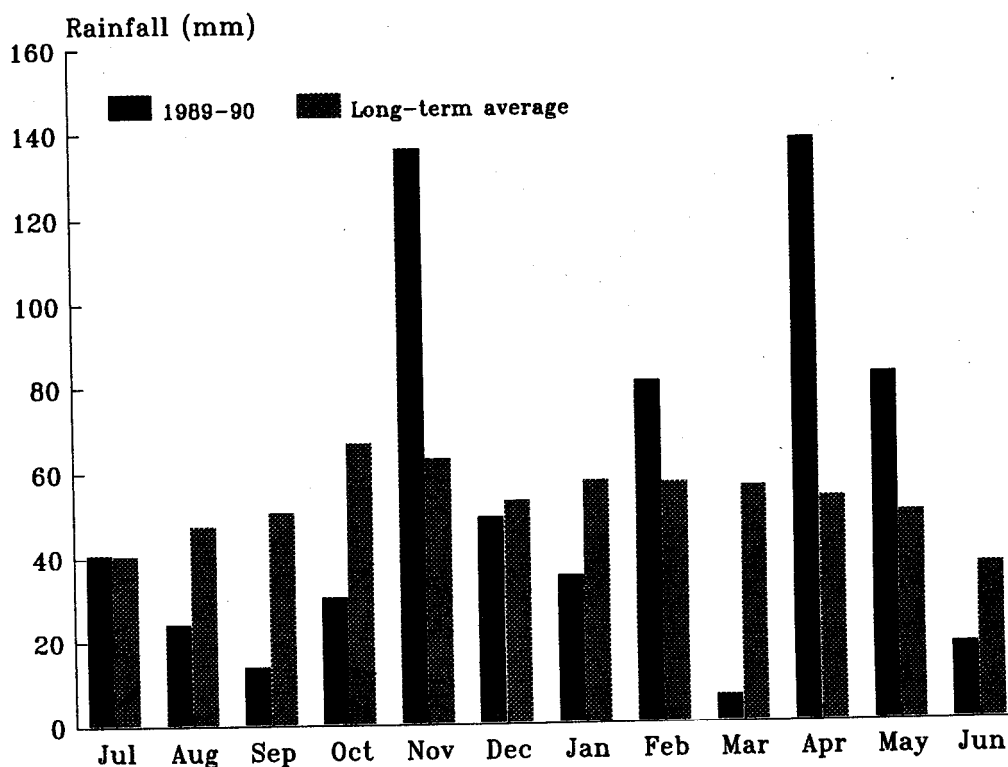


Figure 3. Monthly rainfall totals for 1989-90 and long-term average.

The average monthly temperature was largely consistent with the long-term average (see Figure 4). In April, the average minimum temperature of 10.8 was 4.1 warmer than the long-term average, which is not surprising in view of the above average rainfall in that month.

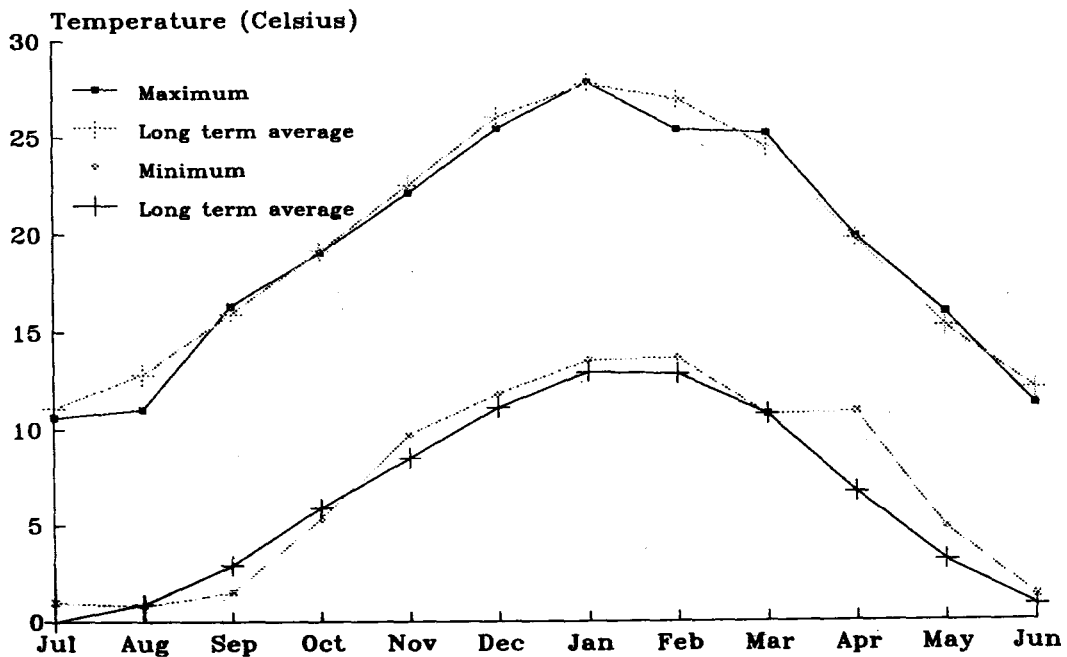


Figure 4. Monthly average maximum and minimum temperatures and long term averages.

Garden Bird Survey

The Garden Bird Survey data are derived from standard charts on which participants record observations on a weekly basis at sites throughout suburban Canberra. Observers record the maximum number of each species seen at any one time during a week within a radius of 100 metres of their home or workplace. A detailed description of the Garden Bird Survey has been made by Hermes (1981). Sixty-one charts were received for 1989-90. The locations of the 61 sites are shown in Figure 5.

In total, 133 species were recorded on the 61 Garden Bird Survey charts submitted for 1989-90. Statistical values of abundance (A), distribution (F), presence (W), recording rate (R), and group size (G) for the 64 commonest species are shown in Table 1 together with the percentage change in these values when compared with the 1988-89 data. The methods used to calculate these values are described in Appendix 1.

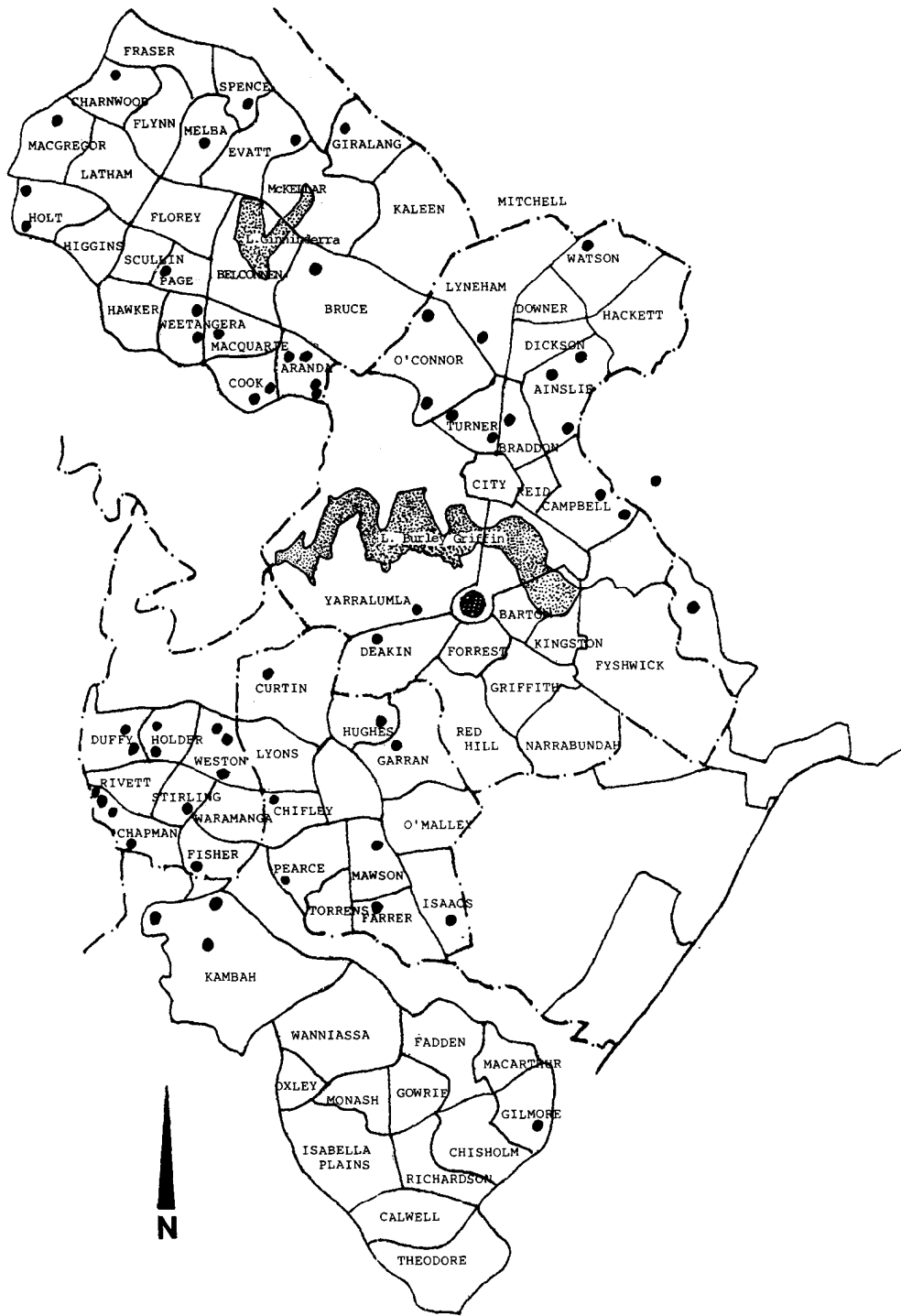


Figure 5. Location of the Garden Bird Survey sites.

Table 1. Values of A, F, W, R, and G for the 64 commonest species recorded in the Garden Bird Survey together with the percentage change in these values when compared with the 1988-89 data (dA, dF, dW, dR). The species are sorted in descending order, using the A statistic, giving a list with the most abundant species appearing first.

Species Name	A	dA%	F	dF%	W	dW%	R	dR%	G
Common Starling	8.826	-13	96.7	-3	52	0	75.59	9	11.7
House Sparrow	7.067	-14	96.7	0	52	0	72.68	-5	9.7
Silvereye	5.426	-7	95.1	-1	52	0	68.31	2	7.9
Galah	5.146	-7	98.4	2	52	0	70.21	1	7.3
Pied Currawong	4.184	-4	100.0	2	52	0	80.97	10	5.2
Sulphur-crested Cockatoo	3.583	18	96.7	0	52	0	61.40	20	5.8
Crimson Rosella	2.908	18	100.0	0	52	0	80.38	6	3.6
Australian Magpie	2.813	8	100.0	0	52	0	83.15	3	3.4
Red Wattlebird	1.925	23	95.1	-1	52	0	76.79	10	2.5
Yellow-faced Honeyeater	1.861	-3	91.8	-1	52	0	30.94	1	6.0
Blackbird	1.837	-6	95.1	4	52	0	74.25	2	2.5
Australian Magpie-lark	1.766	21	100.0	4	52	0	69.28	14	2.5
Common Myna	1.724	43	52.5	13	52	0	33.37	28	5.2
Yellow-rumped Thornbill	1.621	-1	91.8	1	52	0	40.06	8	4.0
Eastern Rosella	1.419	14	100.0	8	52	0	55.38	8	2.6
Australian King-Parrot	1.368	69	72.1	-4	52	0	28.40	21	4.8
Noisy Friarbird	0.868	3	98.4	6	48	14	38.45	10	2.3
Australian Raven	0.783	5	91.8	7	52	0	40.70	6	1.9
Superb Fairy-wren	0.748	24	70.5	-1	52	0	24.55	19	3.0
Black-faced Cuckoo-shrike	0.684	2	95.1	-5	52	0	39.35	0	1.7
Weebill	0.682	10	59.0	18	52	0	24.40	11	2.8
Feral Pigeon	0.584	46	54.1	1	52	0	12.03	28	4.9
Striated Pardalote	0.573	-13	70.5	-4	52	0	27.84	-6	2.1
Eastern Spinebill	0.565	20	86.9	-1	52	0	33.48	15	1.7
Gang-gang Cockatoo	0.509	69	75.4	21	52	8	17.08	58	3.0
Spotted Pardalote	0.453	-31	78.7	-10	52	0	29.67	-17	1.5
Grey Fantail	0.428	17	83.6	0	52	2	27.06	16	1.6
Laughing Kookaburra	0.377	-5	70.5	-10	52	0	20.67	1	1.8
White-naped Honeyeater	0.371	-44	62.3	0	36	0	6.20	-36	6.0
European Goldfinch	0.357	-8	62.3	3	52	2	11.32	-5	3.2
Red-rumped Parrot	0.356	7	32.8	-20	52	0	7.21	-7	4.9
Willie Wagtail	0.351	54	86.9	4	52	0	25.30	39	1.4
Brown Thornbill	0.297	51	41.0	9	52	0	14.39	30	2.1
Welcome Swallow	0.267	35	44.3	3	49	0	7.29	10	3.7
Red-browed Firetail	0.236	25	31.1	16	43	8	4.48	15	5.3
White-winged Chough	0.186	-38	29.5	27	43	5	2.84	-16	6.6
Striated Thornbill	0.160	-22	44.3	3	51	0	5.61	-14	2.9
White-throated Needletail	0.152	-60	34.4	7	12	20	1.46	37	10.4
Golden Whistler	0.146	9	52.5	5	42	2	11.70	9	1.3

Rufous Whistler	0.146	-16	68.9	4	52	0	11.51	-18	1.3
Noisy Miner	0.115	22	23.0	17	49	-4	3.70	-2	3.1
Maned Duck	0.110	44	21.3	-25	36	-10	2.17	-37	5.1
White-browed Scrubwren	0.108	34	23.0	17	51	9	6.09	37	1.8
Fuscous Honeyeater	0.096	-51	37.7	-22	27	-21	5.04	-27	1.9
Dollarbird	0.090	39	42.6	33	26	0	5.83	37	1.5
White-plumed Honeyeater	0.089	-46	47.5	-8	42	-19	4.93	-40	1.8
Masked Lapwing	0.075	21	37.7	6	50	16	4.82	15	1.6
White-eared Honeyeater	0.075	-9	54.1	-11	29	-12	6.24	-7	1.2
Grey Shrike-thrush	0.070	21	32.8	-13	48	12	6.28	12	1.1
Scarlet Robin	0.067	-36	44.3	8	30	-25	4.22	-40	1.6
Grey Currawong	0.063	-17	29.5	-8	49	-6	5.23	-15	1.2
Double-barred Finch	0.059	61	21.3	139	27	29	1.53	44	3.9
Crescent Honeyeater	0.057	71	24.6	25	25	14	3.70	20	1.5
Olive-backed Oriole	0.052	16	36.1	6	36	-10	4.41	-1	1.2
Southern Boobook	0.047	26	34.4	-12	46	24	3.96	5	1.2
Pallid Cuckoo	0.033	-9	32.8	-17	23	-4	2.91	-8	1.1
Australian Hobby	0.030	40	36.1	44	36	33	2.54	27	1.2
Leaden Flycatcher	0.026	-16	23.0	-1	20	-9	1.98	-14	1.3
Fan-tailed Cuckoo	0.021	-11	21.3	-8	31	0	1.91	-19	1.1
Australian Kestrel	0.021	4	26.2	13	36	20	1.83	-7	1.2
Brown Goshawk	0.019	68	29.5	27	30	36	1.83	65	1.0
White-throated Gerygone	0.019	-43	27.9	56	26	-13	1.87	-38	1.0
Sacred Kingfisher	0.013	-39	21.3	-25	17	-23	1.12	-44	1.2

Histograms showing the average A statistic for each month are included for species for which there were 30 or more observations [$A=0.011$]. The greatest monthly A value has been used to determine the vertical scale of each histogram. Therefore, when comparing abundance values for different years and/or species, allowance should be made for differences in this scale.

Waterbird Survey

As in previous years the Waterbird Survey data were collected during monthly visits to Lake Bathurst and Lake George. Surveys of Canberra's urban lakes, Lake Burley Griffin and Lake Ginninderra, which commenced in 1979, finished at the end of June 1989. Surveys of Lake Tuggeranong are continuing. Throughout this report a reference to Lake Tuggeranong includes the silt-trap on Tuggeranong Creek, Village Dam on Village Creek, the water quality control pond at Point Hut and Isabella Pond.

Details of water levels, together with the number of waterbird species and individuals recorded, are in Table 2.

Table 2. Water levels, and number of waterbird species and individuals recorded, at Lake Bathurst (including the Morass), Lake George, and Lake Tuggeranong (including the silt-trap on Tuggeranong Creek, Village Dam on Village Creek, the water quality control pond at Point Hut, and Isabella Pond).

	Jul	Aug	Sep	Oct	Nov	Dec	Jan	Feb	Mar	Apr	May	Jun
a) Water levels (metres):												
LBth	2.52	2.66	2.72	2.64	2.54	2.55	2.37	2.26	2.27	2.17	2.28	2.40
Morass	3.45	3.53	3.58	3.40	3.30	3.30	3.14	3.05	3.06	2.95	3.04	3.31
LGeo	2.46	2.61	2.65	2.62	2.56	2.56	2.41	2.07	2.26	2.13	2.28	2.44
b) Number of waterbird species:												
LBth	20	18	27	28	24	25	32	35	35	26	21	22
LGeo	15	18		22	12	21	32	28	29	33	26	15
LTug		10	-	12	-	12	-	21	-	14	-	9
c) Number of waterbird individuals:												
LBth	2162	2202	2756	4873	4329	6124	fan	7160	13025	16018	5944	4572
LGeo	722	599	2L2	All	925	2924	3776	7001	7816	6179	1938	629
LTug	-	102	-	208	-	536	-	653	-	544	-	234

"Atlas" Project and Miscellaneous Records

1988-89 was the final full year of the "Atlas" and this report includes records only for the project's last two months, July and August 1989.

The success of the "Atlas" led COG to believe that scope existed for other projects, perhaps even more ambitious. Some of which might extend over the entire COG area.

In this time of comparatively rapid environmental change the long-term survival of our avifauna cannot be taken for granted. Effective conservation relies on accurate information regarding the numbers, breeding status, and habitat preferences of different species. Although rare, declining, and invading species are of immediate concern, fluctuations in the status of common species may be indicators of significant changes in the environment. Every record is important.

With this in mind, the development of the COG Database was initiated.

The new system is designed to be one in which all records can be stored, whether they are as a result of casual observations, specific projects, such as the Waterbird and Garden Bird Surveys, or the Australian Bird Count. Survey work can now be designed to achieve greater resolution with regard to abundance, habitat, locality, and breeding. The resultant bank of data will provide information of value for use in, for example, research projects, and environmental submissions and reports.

The COG Database, like the "Atlas", uses a grid system for the collection and recording of bird observations. The Canberra region is divided into 780 grids, each 2.5 minutes by 2.5 minutes. Unlike the straight numbering system used for the "Atlas" the Database grids are identified by an alpha-numeric code, A to Z across the region from west to east and 1 to 30 from north to south. The Australian National Botanic Gardens and Black Mountain, for example, are located in grid K13. The location of the grids in relation to the ACT is shown in Figure 2.

The "Miscellaneous" category will now include all observations from the Canberra region that are not collected specifically for the Waterbird Survey or Garden Bird Survey.

It is hoped that the new Database Project, covering the enlarged COG region, will encourage more members to gather information from areas outside the ACT (but within the region) thus improving our knowledge of the birds of the entire area of interest.

Acknowledgements

Ian Baird compiled the data from the Garden Bird Survey and wrote the survey summary. Wally Brown, Glenda Jackman, Katy Mallets, Rod Morphett, David Purchase and Philip Veerman, assisted with encoding data into computer readable format from the original charts.

The Waterbird Survey data were made available by Michael Lenz (Lake Bathurst and Lake George) and Jack Holland (Lake Tuggeranong).

Contributors to the Highlights and to the Systematic List were Ian Baird, Grahame Clark, Bob Digan, Malcolm Fyfe, Bill Graham, Michael Lenz, Brendan Lepschi, Ian McMahon and David Purchase.

The table of water levels was produced from data supplied by the Groundwater Program of the Bureau of Mineral Resources. Rainfall and temperature graphs were prepared from data supplied by the Canberra Meteorological Office.

References

- Canberra Ornithologists Group.** (1985). A Field List of the Birds of Canberra and District (3rd edition). Canberra Ornithologists Group: Canberra
- Canberra Ornithologists Group. (1990). Annual Bird Report: 1 July 1988 to June 1989. *Canberra Bird Notes* 15: 69-122.
- Davey, C. (1991). A visit to the Silver Gull breeding colony at Lake Bathurst, NSW, in September 1990. *Canberra Bird Notes* 16: 1-3.
- Hermes, N. (1981). Garden Bird Chart and Survey. *Canberra Bird Notes* 6: 112-114.
- Schodde, R., Glover, B., Kinsky, F.C., Marchant, S., McGill, A.R., and Parker, S.A. (1978). Recommended English names for Australian birds. *Emu* 77: 245-307.
- Taylor, I. (1987). Breeding data from suburban gardens. Canberra. 1981 to 1984. *Canberra Bird Notes* 12: 8-13.

APPENDIX 1. Explanatory Notes, Statistical Methods, Abbreviations, and Observer Codes

a) Explanatory Notes

The names and sequence of birds in the Systematic List conform to the RAOU's "Recommended English Names for Australian Birds" (Schodde et al. 1978).

For this report the status of the species has not been included. With the results of COG projects indicating a need to revise some previously held views on the status of certain species within the Canberra region, this feature is being omitted pending completion of a thorough review of all available information.

As applicable, information relating to each species is in the sequence: Garden Bird Survey (**GBS**), Waterbird Survey (**WBS**), "Atlas" project (**Atlas**) and miscellaneous records (**Misc**).

Records are set out in the following format: number of individuals/date. place. grid (observer). For example, "5/10 May ANBG GrK13 (LiB)", indicates 5 birds on 10 May at the Australian National Botanic Gardens Grid K13 and the observer was B. Limegrower. Breeding records are indicated by an "n" (nest) or "fle" (fledgling). or other abbreviation as appropriate, which take the place of the number of individuals. For breeding records of cuckoos. the host species, if recorded, is shown in brackets immediately following breeding indicator e.g. dy(Leaden Flycatcher)/4wk Jan.

Numbers and distribution of birds are sometimes compared with the previous year. Therefore, unless indicated otherwise. a statement in this report such as "overall numbers lower" should be taken to mean lower than in 1988-89.

The words "record(s)" and "observation(s)" are not used to indicate the number of birds involved Where appropriate the number of individuals has been included.

Garden Bird Survey data are often in the form "2wk May". "2wk" referring to the second week of the month. The dates of each week are shown at the top of the survey chart and also listed by Taylor (1987).

When sufficient data are available. breeding records giving the first and last nest and/or fledgling records have been included.

In the tables of waterbird numbers included in the Systematic List. numbers which are underlined indicate that the lake was only partly surveyed. Figures in *bold italics* indicate breeding (non-flying young present but their numbers not included in totals).

Note that "Atlas" data do not, for the most part, include date of month or number of individuals. Since "Atlas" data were compiled primarily on a presence basis such detail is included only in respect of less common species for which reports were submitted to the Rarities Panel, or of breeding records.

The locations of "Atlas" records are identified by the grid numbering system used for that survey. The location of "Atlas" survey grids may be found in the Annual Bird Report for 1988-89 (Canberra Ornithologists Group 1990). A list showing "Atlas" grid numbers and the corresponding grid identifier in the Database system is available from the COG's Records Officer.

b) Garden Bird Survey Statistics

For species recorded with sufficient frequency, descriptive statistics have been calculated:

A - a measure of abundance. This is the average maximum number of individuals of a species recorded at a site for each week over the full year. It is obtained by adding all weekly observations of a species and dividing the sum by the total number of weeks during which observations were made (i.e. there were 2676 observer-weeks this year). If $A=5.1$ then on average, 5.1 individuals of that species were recorded each week, at each site, over the full year.

F - a measure of distribution. This the number of sites at which a species was recorded at least once expressed as a percentage of the total number of sites (i.e. 61 sites this year). If $F=26.2\%$ then a species has been recorded, at least once, at 16 sites (i.e. 26.2 per cent of the 61 sites).

W - the number of weeks in the year for which a species has been recorded at any site. A resident species such as the Australian Magpie-lark *Grallina cyanoleuca* is present throughout the year ($W=52$ weeks); whereas a migrant such as the Olive-backed Oriole *Oriolus sagittatus* may only be present for 36 weeks (i.e. $W=36$).

R - a measure of the recording rate. This is the number of weeks during which a species was recorded expressed as a percentage of the total number of observer-weeks (2676). For example, the Australian Magpie *Gymnorhina tibicen* was recorded during 83 per cent of the observer-weeks ($R=83.2\%$). This means that the Australian Magpie was recorded for 83 per cent of weeks for which observations of any species were made.

G - the average number of individuals of a species recorded in each observation. For example, the calculated G value for the Silver Gull *Larus novaehollandiae* is 86.6 which indicates it is usually observed in large flocks.

c) Abbreviations

The following abbreviations include most of those used in previous editions of the Annual Bird Report but they have been added to and, in some cases, modified to facilitate their use both in this report and the COG Database.

ad adult
ANBG .. Australian National Botanic Gardens
ANU .. Australian National University, Acton
Atlas . ACT Avifauna Database ("Atlas") project
CBN ... Canberra Bird Notes
cf carrying food
Ck creek
CSIRO . Commonwealth Scientific and Industrial Research Organisation. The abbreviation will be followed by the precise location, e.g. CSIRO Gungahlin
dy dependent young
E East
file ... fledgling
f female
GBS ... Garden Bird Survey
Gr Database or "Atlas" project grid (number)
Hs Homestead
imm ... immature
juv **juvenile**
km ... **kilometre**
LBth .. **Lake Bathurst**
LBG ... **Lake Burley Griffin**
LBGE .. Lake Burley Griffin East (includes Jerrabomberra Wetlands)
LBGW .. Lake Burley Griffin West
LGeo .. Lake George
LGeoN . Lake George North
LGeoS . Lake George South
LGIN .. Lake Ginninderra
LTug .. Lake Tuggeranong
m male
max ... maximum
min ... minimum
Misc .. miscellaneous (records)
Mt/Mtn .. Mount/Mountain
N North
n nest
nb ... nest building
ne nest With eggs
nr near
ny nest with young

on bird on nest
Pk Park
pr pair
R River
Ra Range
Rd Road
S South
TNR Tidbinbilla Nature Reserve
UNIC ... University of Canberra, Bruce
unsp ... unspecified
..... West
WBS Waterbird Survey
irk week

d) Observer Codes

Observers are identified by codes which have been developed for use in both the Annual Bird Report and the COG Database. These codes are made up of three letters fawn the names of the persons or organisations concerned, plus one number. The complete code will be used when entering data into the database. In this report the numeral will be dropped except in cases where two observers have the same alpha code.

AlB Allan, Barbara	ClM Clayton, Mark
AlR Allen, Richard	ClN Clark, Nicola
AnB Anderson, Bernice	ClS Cleland, Sylvia
APC ACT Parks & Conservation Service	CoD Cowley, Del
AsM Aston, Margaret	CrI Crawford, Isobel
BaI Baird, Ian	CrJ Crawford, John
BaJ Barr, Joe	CRW Casper, R & W
BBF Brown, B & F	DaB Daly, Barbara
BeC Bennett, Catherine	DaC Davey, Chris
BeR Bennett, Ross	DaP Davidson, Peter
BeS Berry, Sandra	DCM Dow, Coral & Murray
BiJ Bissett, John	DiB Digan, Bob
BoJ Bounds, Jenny	DNR Dengler, Nancy & Ron
BrG Browning, Graham	DoM Doyle, Mike
BrM Brookfield, Muriel	DrA Drew, A
BuA Buick, Andy	EGR Elliott, Grahame & Robyn
BuM Butterfield, Martin	ELG Elliott, Grahame
CCR Cannon, C & R	FiB FitzGerald, Bryan
ChS Chittick, Shirley	FyM Fyfe, Malcolm
ChV Chapman, Val	GiJ Gibson, John
ClG Clark, Grahame	GLJ Gleeson, John
	GoL Gowing, Linda

GrB Graham, Bill
HAJ Holland, Andrea & Jack
HaK Hahne, Kay
HeB Hetherington, B
HoA Howarth, Ann
HoB Horrigan, Bill
HoJ1 Holland, Jack
HoJ2 Hone, Jim
HoR Hosking, Ross
HuN Hunter, Neale
JaG Jackman, Glenda
JoB Jones, Beth
JoD Johnson, Delia
KeR Kennemore, Rosemary
KiM Kirk, Mildred
LaD Landon, David
LaJ Lawford, Jenny
LaM Larkin, Matthew
LeB Lepschi, Brendan
LeM Lenz, Michael
LiB Lindenmayer, Bruce
LiM Lintermans, Mark
LuG Lucas, Glenda
LuN Luff, Noel
NAB Martin, Bill
MaD Magrath, David
MILK Mallett, Katy
MaP Mahoney, Paul
MaR Mason, Richard
McA McKenzie, Ann
McB McMurtrie, Betty
McD McDonald, David
McI McMahan, Ian
McR McLachlan, Reid
MiP1 Milburn, Peter
Min Minogue, Peter

MoM Moncur, Mike
MoR Morphett, Rod
MuS Mugford, Stephen
NiA Nicholls, Nick
Kill Nix, Henry
OMP Ormay, Mary & Peter
PaR Parnell, Rob
PeB Pennefather, Barrie
PeJ Pennhallurick, John
PoH Possingham, Hugh
PrK Price, K
PuD Purchase, David
ReD Rentz, David
ReJ Redmond, Jim
ReM Reid, Margaret
RoA Rowell, Alison
RoC Rowell, Cecily
RoT Ross, Tony
SBD Sledge, Bess & David
SeM Sexton, M
SmD Smillie, Daniel
SmM Smith, Maureen
StG Stephinon, Graham
StH Stephinon, Helen
TaM Taylor, McComas
ThR Thackway, Richard
VaJ Vandermark, Jo
VeP Veerman, Philip
WAH Wright, Alan & Hazel
WeS Webb, Sue
WhJ Whatman, Jean
WiB Wilson, Brendan
WiS Wilson, Steve
WrH Wright, Hazel
WrM Wright, Michael

APPENDIX 2. Systematic List

GREBES

Great Crested Grebe *Podiceps cristatus*

WBS: 5 records. all from LBth: 3/21 Jan; 9/26 Feb; 44/26 Mar, 28/29 Apr; 4/20 May. Numbers have been small for several years and 44 at LBth on 26 Mar is the largest recorded for any site since Aug 1979 when 67 were reported from LGeo.

Hoary-headed Grebe *Poliiocephalus poliocephalus*

WBS: Like the Australasian Grebe, numbers have declined at LTug but remain at last years high level at LBth and LGeo. As in previous years, the largest numbers were reported in summer and winter, with particularly large numbers in Mar/Apr at LBth and LGeo:

	Jul	Aug	Sep	Oct	Nov	Dec	Jan	Feb	Mar	Apr	May	Jun
LTug	-	0	-	0	-	4	-	5	-	3	-	0
LBth	39	31	75	121	78	225	<u>754</u>	583	992	1068	56	30
LGeo	19	17	1	2	12	13	100	205	82	1422	22	0

Atlas: 5 non-breeding records.

Misc: 27 individuals recorded on three data sheets.

Australasian Grebe *Tachybaptus novaehollandiae*

WBS: As with the Hoary-headed Grebe, numbers have declined at LTug but remain at last year's high level at LBth and LGeo:

	Jul	Aug	Sep	Oct	Nov	Dec	Jan	Feb	Mar	Apr	May	Jun
LTug	-	0	-	0	-	0	-	8	-	4	-	0
LBth	19	8	2	9	0	9	0	10	14	3	1	3
LGeo	23	58	5	23	12	16	35	44	31	12	5	0

Atlas: 26 non-breeding records.

Misc: 101 individuals recorded on 50 data sheets. 4 breeding records: first dy/27 Oct Mitchell GrL12 (TaM), last n/3 Dec LGeo GrR11 (BeC).

PELICAN, DARTER & CORMORANTS

Australian Pelican *Pelecanus conspicillatus*

GBS: 5 records of birds flying overhead. 2/1wk Jul Bruce GrJ12 (HaK), 4/2wk Sep Cook GrJ13 (BrM), 4/4wk Feb 1/4wk Mar 1/4wk Apr Campbell GrL14 (E1G).

WBS: Except for LGeo, numbers remain at last year's low level:

	Jul	Aug	Sep	Oct	Nov	Dec	Jan	Feb	Mar	Apr	May	Jun
LTug	-	5	-	1	-	0	-	5	-	0	-	0
LBth	0	0	0	0	0	5	2	5	2	0	0	1
LGeo	0	0	1	2	Q	21	40	59	72	71	32	5

Atlas: 6 non-breeding records.

Misc: 18 individuals recorded on nine data sheets.

Darter *Anhinga melanogaster*

As in previous years, only a few records reported.

GBS: 2 records. 1/4wk Apr and 1/5wk Apr Campbell GrL14 (E1G).

WBS: 2/22 Apr LGeo (LeM, DiB).

Atlas: 5 non-breeding records.

Misc: 14 individuals recorded on 11 data sheets.

Great Cormorant *Phalacrocorax carbo*

GBS: 6 records. Jan Feb Mar Apr, of birds flying overhead at Campbell GrL14, number of individuals from 1 to 8 (E1G).

WBS: 41 in Oct is the largest number on record for LTug (previous was 11 in Feb 1989); and 26 in Apr is the largest on record for LBth (previous was 13 in Feb 1982):

	Jul	Aug	Sep	Oct	Nov	Dec	Jan	Feb	Mar	Apr	May	Jun
LTug	-	0	-	41	-	3	-	1	-	6	-	1
LBth	0	0	2	1	1	0	5	9	10	26		5
LGeo	0	0	Q	Q	Q	0	0	0	0	1	0	0

Atlas: 9 non-breeding records.

Misc: 21 individuals recorded on 18 data sheets.

Little Black Cormorant *Phalacrocorax sulcirostris*

GBS: 6/4wk Mar Campbell GrL14 (E1G).

WBS: Overall numbers similar to previous years:

	Jul	Aug	Sep	Oct	Nov	Dec	Jan	Feb	Mar	Apr	May	Jun
LTug	-	7	-	10	-	3	-	27	-	2	-	1
LBth	1	0	2	0	0	0	2	7	1	5	0	0
LGeo	0	0	Q	0	0	0	5	3	0	3	8	0

Atlas: 8 non-breeding records.

Misc: 59 individuals recorded on 15 data sheets.

Little Pied Cormorant *Phalacrocorax melanoleucos*

GBS: 1/3wk Aug Pialligo GrM14 (RoA).

WBS: The numbers at LBth in Jan-Jun rose substantially and 162 in Apr is the largest ever recorded for any site (in the previous year the largest for LBth was 19 in both Apr and May):

	Jul	Aug	Sep	Oct	Nov	Dec	Jan	Feb	Mar	Apr	May	Jun
LTug	-	4	-	8	-	0	-	5	-	7	-	2
LBth	1	0	7	1	0	1	24	36	109	162	16	35
LGeo	10	1	3	1	Φ	35	40	28	14	53	14	9

Atlas: 30 non-breeding records.

Misc.: 96 individuals recorded on 40 data sheets.

HERONS, EGRETS & BITTERNs

Pacific Heron *Ardea pacifica*

GBS: 2 records, 1/1wk Mar Turner GrL13 (Ba) 1/1wk Jan Pialligo GrM14 (RoA).

WBS: Numbers continue to increase:

	Jul	Aug	Sep	Oct	Nov	Dec	Jan	Feb	Mar	Apr	May	Jun
LTug	-	0	-	0	-	0	-	10	-	0	-	0
LBth	0	0	0	6	0	2	1	0	4	0	0	0
LGeo	0	0	0	0	0	0	9	5	0	2	0	0

White-faced Heron *Ardea novaehollandiae*

GBS: 27 records from seven suburbs, including 16 from Pialligo, for all months except May Jun Jul. All of 1 to 4 birds except 10/1 wk Dec Pialligo GrM14 (RoA).

WBS: Numbers continue to increase and for each of the three sites were the largest ever recorded. As in the previous year, the largest numbers were reported in summer and autumn:

	Jul	Aug	Sep	Oct	Nov	Dec	Jan	Feb	Mar	Apr	May	Jun
LTug	-	6	-	22	-	8	-	19	-	11	-	4
LBth	5	5	4	4	2	1	3	18	35	31	4	4
LGeo	1	3	2	11	Q	23	95	207	171	151	116	7

Atlas: 47 non-breeding records.

Misc: 17 records (including 1 breeding record ne/2 Oct Radio One Station GrK12 (RoT)).

Cattle Egret *Ardeola ibis*

GBS: 6/4wk Apr and 4/5wk Apr Campbell GrL14 (EIG).

WBS: Numbers continue to be small, except for LGeo:

	Jul	Aug	Sep	Oct	Nov	Dec	Jan	Feb	Mar	Apr	May	Jun
LTug	-	0	-	0	-	0	-	0	-	6	-	0
LBth	0	0	0	0	0	0	0	0	0	0	0	0
LGeo	0	10	21	26	0	0	0	3	0	0	0	32

Atlas: 3 non-breeding records.

Misc: Recorded on three data sheets.

Great Egret *Egretta alba*

GBS: 1/4wk May Campbell GrL14 (EIG).

WBS: Slight increase on the numbers reported last year:

	Jul	Aug	Sep	Oct	Nov	Dec	Jan	Feb	Mar	Apr	May	Jun
LTug	-	0	-	0	-	0	-	2	-	0	-	0
LBth	0	0	0	1	0	0	0	1	1	0	0	1
LGeo	0	0	0	2	0	0	8	10	4	5	7	2

Atlas: 2 non-breeding records.

Misc: Recorded on five data sheets.

Little Egret *Egretta garzetta*

First observation since Dec 1987.

Misc: 1/1 Jan Kelly's Swamp GrL14 (LuN).

Intermediate Egret *Egretta intermedia*

WBS: Exceptionally large number at LBth in Oct: 9/22 Oct LBth (LeM). 2/22 Apr LGeo (LeM, DiB).

Misc: 2/25 Nov Jerrabomberra Wetlands GrL14 (BiJ).

Rufous Night Heron *Nycticorax caledonicus*

WBS: 1/25 Feb LTug (Silt Trap) (GrB WrM).

Misc: 1 record - 1/3 Dec LGeoS GrR11 (BeC, WrH).

Australasian Bittern *Botaurus poiciloptilus*

First observations since 1978.

WBS: 3/17 Dec LGeo (LeM); 5/7 Jan LGeo (LeB LeM WAH); 1/25 Feb LGeo (LeM).

STORK, IBISES AND SPOONBILLS

Glossy Ibis *Plegadis falcinellus*

First records since 1985.

WBS: 3/7 Jan LGeo (LeM LeB WAH), 4/21 Jan LGeo (LeM. DNR).

Misc: 4/17 Jan LGeo (VeP).

Sacred Ibis *Threskiornis aethiopia*

GBS: 19 records from Pialligo 12 (RoA). Holt 6 (EGR), Kambah 1 (WiS). Records in Aug (1), Oct (1), Dec (3), Feb (3), Mar (4), Apr (7). Numbers varied from 1 to 50. Largest in Mar and Apr.

WBS: Maximum numbers at LBth and LGeo in autumn:

	Jul	Aug	Sep	Oct	Nov	Dec	Jan	Feb	Mar	Apr	May	Jun	
LTug	-	0	-	0	-	0	-	2	-	0	-	0	
LBth	0	0	0	0	1	0	2	6	35	9	6	0	
LGeo	0	49	0	5	1	66	10	33		9	194	139	8

Atlas: 2 non-breeding records.

Misc: Recorded on seven data sheets.

Strawnecked Ibis *Threskiornis spinicollis*

GBS: 13 records from Pialligo 10 (RoA). Holt 2 (EGR), Stirling 1 (JoD). Records in Apr (1), Dec (5), Jan (4), Feb (2), Mar (1). Numbers varied from 1 to 180. Largest in Dec.

WBS: Numbers slightly larger than last year at LBth and considerably larger at LGeo with maximum in autumn:

	Jul	Aug	Sep	Oct	Nov	Dec	Jan	Feb	Mar	Apr	May	Jun
LBth	0	0	0	0	0	9	Q	8	16	0	0	0
LGeo	0	56	Q	Q	0	35	14	31	86	119	2	0

Misc: Recorded on five data sheets.

Royal Spoonbill *Platalea regia*

WBS: Exceptionally high numbers, usually only a few are seen at LBth and LGeo:

	Jul	Aug	Sep	Oct	Nov	Dec	Jan	Feb	Mar	Apr	May	Jun
LBth	0	0	6	0	0	0	Q	8	1	0	0	0
LGeo	0	0	0	0	0	5	10	33	63	84	21	3

Misc: 1 record - 4/24 Dec LGeoS GrR12 (WAH).

Yellow-billed Spoonbill *Platalea flavipes***WBS:** Numbers fairly normal, but increase at LGeo compared to last year:

	Jul	Aug	Sep	Oct	Nov	Dec	Jan	Feb	Mar	Apr	May	Jun
LTug	-	0	-	0	-	0	-	1	-	0	-	0
LBth	0	0	0	0	0	0	1	0	5	5	0	0
LGeo	0	1	0	5	2	2	40	28	20	26	4	4

Misc: 2 records - 4/24 Dec LGeoS GrR12 (WAH). 2/24 Mar LTug (WrH).**SWAN & DUCKS****Black Swan *Cygnus atratus*****WBS:** LTug: 1 record - 2/17 Dec. LBth: increase from previous year continued. max Oct and Dec; birds on nests or with small juv since May of previous year until Feb and again May, Jun. LGeo: largest numbers Dec - May; birds on nests or with juv since May of previous year until Dec.

	Jul	Aug	Sep	Oct	Nov	Dec	Jan	Feb	Mar	Apr	May	Jun
LBth	241	309	629	879	515	954	<u>529</u>	461	580	736	418	328
LGeo	134	176	134	<u>187</u>	Q	354	456	447	454	389	403	266

Freckled Duck *Stictonetta naevosa***WBS:** LBth and LGeo in small numbers Jan - Apr, max Feb/Mar.

	Jul	Aug	Sep	Oct	Nov	Dec	Jan	Feb	Mar	Apr	May	Jun
LBth	0	0	0	0	0	0	2	4	6	1	0	0
LGeo	0	0	0	0	0	0	1	11	1	1	0	0

Australian Shelduck *Tadorna tadornoides***WBS:** LTug: 1 record - 1m/25 Feb. LBth, LGeo present all months, most common Nov - Feb (LBth), Dec - Feb (LGeo). 1 brood Sep (LBth).

	Jul	Aug	Sep	Oct	Nov	Dec	Jan	Feb	Mar	Apr	May	Jun
LBth	115	60	112	181	516	303	<u>437</u>	434	159	233	106	208
LGeo	50	28		425		1	220	350	281	66	34	70

Pacific Black Duck *Anas superciliosa***GBS:** Records (8) from one site only, Pialligo GrM14 (RoA).**WBS:** LTug: Regular max figures (Dec - Feb) double those of previous year. LBth: more common than in previous year. max Jan. Mar. LGeo: max Feb, Mar.

Jul	Aug	Sep	Oct	Nov	Dec	Jan	Feb	Mar	Apr	May	Jun	
LTug	-	30	-	35	-	143	-	180	-	135	-	93
LBth	20	19	80	71	17	117	<u>155</u>	<u>63</u>	373	26	30	13
LGeo	65	6	61	<u>63</u>	260	346	264	645	447	165	146	77

Grey Teal *Anas gibberifrons*

WBS: LTug: present most months, max Feb. LBth: regular with max Dec - Feb. Broods Jul - Sep, therefore breeding records all months since Oct 1988. LGeo: max Feb/Mar, broods Oct. Dec, Jan.

	Jul	Aug	Sep	Oct	Nov	Dec	Jan	Feb	Mar	Apr	May	Jun
LTug	-	2	-	6	-	29	-	40	-	12	-	0
LBth	67	29	165	455	440	1475	<u>1392</u>	1187	2808	251	46	573
LGeo	55	30	15	44		1090	1180	2900	3800	145	35	76

Chestnut Teal *Anas castanea*

WBS: LTug: one record: 1/25 Feb. LBth: present all months, in larger numbers than previous year. with notable max Dec; broods Jul, Sep - Nov. LGeo: regular but in smaller numbers than previous year, max Mar. May.

	Jul	Aug	Sep	Oct	Nov	Dec	Jan	Feb	Mar	Apr	May	Jun
LBth	127	47	148	382	190	809	<u>293</u>	201	500	122	109	121
LGeo	15	12	a	a	5	67	17	25	100	45	98	5

Australasian Shoveler *Anas rhynchotis*

WBS: LTug: one record: 1f/17 Dec. LBth: usual increase at the end of the year, notable further influx from Jan onwards with max Mar. LGeo: increases from Jan onwards. max Apr.

	Jul	Aug	Sep	Oct	Nov	Dec	Jan	Feb	Mar	Apr	May	Jun
LBth	19	0	13	361	340	397	<u>746</u>	770	1094	720	47	91
LGeo	14	2	6	22	0	52	120	203	416	627	127	0

Pink-eared Duck *Malacorhynchus membranaceus*

WBS: Rare or absent Jul - Dec. more common Jan - Apr but in smaller numbers than in previous year, max Mar, rare again May/Jun.

	Jul	Aug	Sep	Oct	Nov	Dec	Jan	Feb	Mar	Apr	May	Jun
LBth	2	2	4	4	0	21	40	270	627	15	0	1
LGeo	0	0	0	0	0	0	170	242	490	260	2	0

Hardhead *Aythya australis*

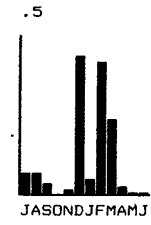
WBS: Absent or rare most months. LBth notable max Mar.

	Jul	Aug	Sep	Oct	Nov	Dec	Jan	Feb	Mar	Apr	May	Jun
LBth	2	0	2	0	2	2	4	39	315	5	0	0
LGeo	0	0	0	0	0	0	2	45	2	24	1	0

Maned Duck *Chenonetta jubata*

GBS: Records from 13 sites. Overall more common than previous year, but absent to rare Oct/Nov, Feb max larger than previous year. A=0.110, F=21.31%, W=36, R=2.17%. G=5.07

WBS: LTug: numbers similar to previous year, but extended max Dec Apr; broods Oct - Dec. LBth, LGeo in smaller numbers than in previous year. max. Mar.



	Jul	Aug	Sep	Oct	Nov	Dec	Jan	Feb	Mar	Apr	May	Jun
LTug	-	11	-	49	-	273	-	207	-	306	-	101
LBth	13	24	8	23	2	59	120	32	299	4	0	24
LGeo	60	18	1	0	0	17	123	138	199	140	15	0

Blue-billed Duck *Oxyura australis*

WBS: Only LBth. More common than in previous year with max Feb; broods Sep - Nov. Feb. Mar.

	Jul	Aug	Sep	Oct	Nov	Dec	Jan	Feb	Mar	Apr	May	Jun	
LBth		24	25	15	12	4	13	2	72	21	15	0	23

Musk Duck *Biziura lobata*

WBS: LTug: present Dec - Apr. LBth: present all months, max. Feb - Apr.

	Jul	Aug	Sep	Oct	Nov	Dec	Jan	Feb	Mar	Apr	May	Jun
LTug	-	0	-	0	-	2	-	4	-	2	-	2
LBth	3	1	2	4	1	19	13	23	22	20	3	6

KITES, HAWKS, EAGLES AND HARRIERS

Black-shouldered Kite *Elanus notatus*

GBS: A total of 60 birds were reported from 11 sites. The greatest number (21 over 9 months) were seen at Pialligo GrM14 (RoA). All of the variable indicators for this year show an increase - A=0.022, F=18.03%, W=33, R=1.94%, G=1.15. No records of breeding.

WBS: Of the 12 records flow the lakes 2 were from LBth and the balance, including two juv from the Tuggeranong area.

Atlas: 13 non-breeding records. No recorded breeding activity.

Misc: 22 non-breeding records.

Whistling Kite *Haliastur sphenurus*

GBS: 1/2wk Feb Kambah GrJ16 (VeP).

WBS: 7 birds recorded during 5 visits to LBth Sep, Oct, Mar and Jun (LeM, DoM, MiP2) and 13 birds during 8 visits to LGeo Aug. Sep. Jan, Apr, May and Jun (LeM, BeR).

Misc: 1/13 Aug Sturt Is GrG12 (C1G). 1/14 Oct Campbell Pk GrM13 (LeM), 1/4 Nov Uriarra Crossing (TaM), 1/17 Jan LGeoN GrR6 (VeP). 1/4 Mar Holt (EGR). 1/18 Mar Mt Ainslie (LeM), 1/5 May S of Kambah Pool GrI16 (VeP), 2/4 Jun Uriarra Crossing GrG12 (LeB), 2/16 Jun Brooklands Rd GrH11 (EGR).

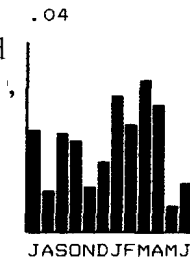
Brown Goshawk *Accipiter fasciatus*

GBS: 50 birds recorded at 18 sites. The decline in urban numbers noted in 1987-88 and 1988-89 was not in evidence this year. $A=0.019$

$F=29.51\%$, $W=30$. $R=1.83\%$, $G=1.02$.

Atlas: 9 non-breeding records.

Misc: 17 non-breeding records.



Collared Sparrowhawk *Accipiter cirrhocephalus*

GBS: 18 records from 9 sites in suburbs which border the urban area of Canberra.

No breeding records.

WBS: 2 records from the W basin of LBth.

Atlas: 3 non-breeding records.

Misc: 5 non-breeding records.

Grey Goshawk *Accipiter novaehollandiae*

Addendum: 1988-89 Annual Bird Report (CBN 15(4): p. 93) - Add "1/13 Jun Mt Pleasant GrL14 (LeB), 1/28 Jun Dairy Flat Rd GrM14 (RoA)".

Misc: 1/3wk Aug Pialligo (RoA). 1/27 May Acton GrK13 (PaR).

White-bellied Sea-Eagle *Haliaeetus leucogaster*

WBS: Sightings at LGeo on 21 Jan, 8 Apr, 20/21 May (LeM) and at LBth on 23 Jul, 20 Aug, 22 Oct, (2) 19 Nov. (2) 17 Dec, 22 Apr and 21 May (LeM, MiP2, DoM, MiP1).

Misc: 1/4 Aug ANU GrK13 (MaP). 1/7 Sep LBG/Sullivans Ck GrK13 (LuN, PoH). 1/7 Oct Googong Dam (GoL). 1/20 Jan Jerrabomberra Wetlands GrL14 (BiJ), 1/4 Mar Kambah Pool GrI16 (VeP).

Wedge-tailed Eagle *Aquila audax*

GBS: 15 birds recorded over seven sites. All of the indicators were larger - $A=0.006$, $F=11.48\%$, $W=10$. $R=0.41\%$, $G=1.36$.

WBS: A total of 17 birds were seen at LBth during the year and 4 birds during two visits to LGeo.

Atlas: 44 records of single birds, 27 were in areas with prominent water features, e.g. Uriarra Crossing.

Misc: 41 records.

Little Eagle *Hieraaetus morphnoides*

GBS: 15 records of 23 birds from four sites, the greatest number (11 records. 19 birds, over 8 months) from Gilmore GrL16 (GrB). Abundance value up on 1988-89 (0.006) - A=0.009, F=6.56%, W=14, R=0.56%, G=1.53. Again there was no seasonal pattern.

WBS: 3 records - 1/22 Oct LTug 1/20 Aug LBth (MiP2), 2/17 Dec LGeo (UM).

Atlas: 13 non-breeding records.

Misc: 26 non-breeding records.

Spotted Harrier *Circus assimilis*

Misc: 1/1 Feb Bungendore, 2km south (WiB).

Marsh Harrier *Circus aeruginosus*

WBS: LGeo - 1/17 Dec. 3/25 Feb. 1/8 Apr. 1/22 Apr, 2/20 May, 1/21 May (LeM); LBth - 1/25 Mar East Basin (LeM) and Morass (DoM).

Misc: 1/16 Sep Point Hut GrJ17 (VeP). 1/21 Mar Rose Lagoon GrU4 (GiJ).

FALCONS

Peregrine Falcon *Falco peregrinus*

GBS: 2/3wk Sep Weston GrJ15 (LeB), 1/2wk Jan Kambah GrI15 (BeR), 2/3wk Mar and 1/2wk Apr Kambah GrJ16 (VeP), 1/1wk Apr Garran GrK15 (**AIR**).

WBS: 1/22 Apr Point Hut GrJ17 (Hon), 7 records at LBth. 1/23 Jul, 1/22 Oct, 1/25 Feb, 1/8 Apr, 1/21 Apr (LeM), 1/24 Feb (MiP1), 1/20 Aug (MiP2).

Atlas: 11 non-breeding records.

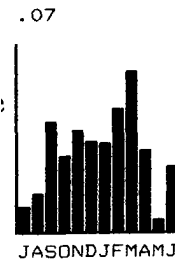
Misc: 10 non-breeding records.

Australian Hobby *Falco longipennis*

GBS: 68 records of 80 birds from 22 sites. The main sightings were from Kambah (10). Weston (10), O'Connor (8) and Chapman (8). All values were up A=0.030, F=36.07%. W=36, R=2.54%, G=1.18. There was no Feb peak as mentioned in the previous two reports.

WBS: 3 records. 1/20 Aug, Tuggeranong Centre (BiJ), 1/20 Aug LTug 1/20 May LBth (CrI, LuN).

Atlas: 7 non-breeding records of which 5 were from the outskirts of Canberra.



Misc: 10 records. 1 breeding record - n/1 Dec O'Connor Ridge GrK13 (McI).

Brown Falcon *Falco berigora*

GBS: 10 records of 14 birds from three sites in Kambah (WiS. BeR) and Farrer (SmM). Values generally smaller - A=0.005. F=4.92%, W=10, R=0.37%. G=1.40.

WBS: 22 records (30 birds). 16 records (21) at LBth, 3 (5) at LGeo and 3 (4) at LTug.

Atlas: 31 non-breeding records. No breeding records.

Misc: 37 birds recorded at 29 sites.

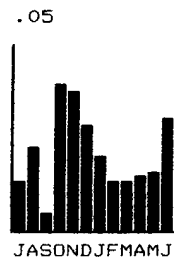
Australian Kestrel *Falco cenchroides*

GBS: 49 records of 56 birds from 16 sites. 33 of the records were from two sites in Kambah (WiS, BeR).

WBS: 15 records from LBth (21 birds), LTug (9) and LGeo (11).

Atlas: 32 non-breeding records.

Misc: 42 non-breeding-records. 1 breeding record - dy/24 Dec LGeoS GrR12 (WAH).



QUAILS

Stubble Quail *Coturnix novaezelandiae*

WBS: LGeoS - 1/19 Nov; LBth - 5/19 Nov, 2/17 Dec, 2/20 Jan, 4/25 Mar, 1/24 Jun; LTug - 3/20 Aug, 1/22 Oct, 2/25 Feb, 16/22 Apr.

Atlas: 1/13 Aug Tuggeranong Hill GrK17 (GrB), 1/20 Aug LTug (HoJ1).

Brown Quail *Coturnix australis*

WBS: 2/22 Oct Stranger Pond (HoJ1), 1/17 Dec LTug (BiJ, ChS), 2/17 Dec Isabella Ponds (DrA, DuG), 1/17 Dec Stranger/Point Hut (HoJ1, BuA), 13/25 Feb Isabella Ponds (GrB, WrM), 8/24 Jun Bonython (HoJ1).

Misc: 1/16 Nov LGIN/UNIC GrJ12 (CIN), 1/26 Nov Kambah Pool Rd GrI16 (BiJ), 1/18 Jan Kambah Pool GrI16 (BiJ), 1/28 Jan Urambi Hills GrI16 (PoH), 2/15 Apr nr Rye Pk (LeB).

BUTTON-QUAILS, RAILS AND WATERHENS

Painted Button-quail *Turnix varia*

Misc: 1 record only, 7 Oct Carrington Rd GrK10 (TaM).

Buff-banded Rail *Rallus philippensis*

Addendum: 1988-89 Annual Bird Report (CBN 15(4): p. 95). Add - "1/8 Dec CSIRO. Gungahlin (CIM)."

Baillon's Crake *Porzana pusilla*

WBS: 2 records at LGeoN: 6/7 Jan (LeM, LeB, WAH), 3/21 Jan (LeM, DNR). all birds flushed.

Australian Crake *Porzana fluminea*

WBS: 2 records at LGeoN: 1/21 Jan (LeM, DNR), 1/8 Apr (LeM). all birds flushed.

Dusky Moorhen *Gallinula tenebrosa*

Atlas: 15 non-breeding records

Misc: 246 birds recorded on 30 data sheets.

Purple Swamphen *Porphyrio porphyrio*

Atlas: 6 non-breeding records

Misc: 190 birds recorded on 29 data sheets

Eurasian Coot *Fulica atra*

WBS: LBth: More common than in previous years, notable max Apr. LGeo: small numbers. max Feb; 1 brood on pond at southern end of lake.

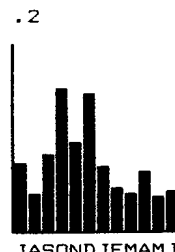
	Jul	Aug	Sep	Oct	Nov	Dec	Jan	Feb	Mar	Apr	May	Jun
LBth	100	5	1	45	170	254	<u>1370</u>	2460	4300	11485	4110	2327
LGeo	50	40	1	15	59	84	320	680	205	95	80	0

LAPWINGS, PLOVERS AND DOTTEREL

Masked Lapwing *Vanellus miles*

GBS: Recorded at 23 sites. Numbers similar to previous year, max Oc - Dec. A=0.075, F=37.7%, W=50, R=4.82%, G=1.57.

WBS: LTug: Pattern of observations similar to previous years, extended max Dec - Apr. LBth: In similar numbers and seasonal distribution to previous year, max Dec - Feb. LGeo: max Mar/Apr.



	Jul	Aug	Sep	Oct	Nov	Dec	Jan	Feb	Mar	Apr	May	Jun
LTug	-	10	-	9	-	39	-	36	-	36	-	15
LBth	53	44	48	38	24	106	51	124	66	82	76	33
LGeo	25	27	2	1	4	121	106	109	238	200	102	6

Banded Lapwing *Vanellus tricolor*

WBS: Only LBth, present Sep - Nov, Jan. Jan Feb Mar Apr May Jun

	Jul	Aug	Sep	Oct	Nov	Dec	Jan	Feb	Mar	Apr	May	Jun
LBth	0	0	23	15	3	0	0	0	0	0	0	0

Lesser Golden Plover *Pluvialis dominica*

WBS: Only LBth, present Sep - Nov, Jan - Mar. One bird with a leg injury stayed over winter and attained full breeding plumage. It then closely resembled an American Golden Plover *Pluvialis dominica fulva*. The bird attracted flocks of observers from far-a-field. A detailed examination by Peter Milburn and Mike Carter (Melbourne) settled the question: not *fulva* but the "usual" species *d. dominica*.

	Jul	Aug	Sep	Oct	Nov	Dec	Jan	Feb	Mar	Apr	May	Jun
LBth	0	0	10	1	10	0	28	15	28	1	1	1

Red-kneed Dotterel *Erythronyx cinctus*

WBS: Most records LGeo: 18/7 Jan, 130/8 Apr (LeM) (largest flock since start of WBS), 13/22 Apr (DiB, LeM), 1/24 Feb LBth (MiP1).

Double-banded Plover *Charadrius bicinctus***WBS:** Present Aug. Feb - Jun; numbers overall smaller than in previous years.

	Jul	Aug	Sep	Oct	Nov	Dec	Jan	Feb	Mar	Apr	May	Jun	
LBth	0	35	0	0	0	0	Q	3	0		0	31	0
LGeo	0	0	Q	0	Q	0	0	0	12		7	30	8

Red-capped Plover *Charadrius ruficapillus***WBS:** LTug: 1 notable record - 1/22 Oct (HoJ1). LBth: Present all months, max Oct/Nov, Feb/Mar, runners Dec.

	Jul	Aug	Sep	Oct	Nov	Dec	Jan	Feb	Mar	Apr	May	Jun
LBth	11	7	65	264	202	89	111	157	146	75	74	73

Black-fronted Plover *Charadrius melanops***WBS:** Regular only LTug. overall in smaller numbers than previous year.

	Jul	Aug	Sep	Oct	Nov	Dec	Jan	Feb	Mar	Apr	May	Jul	
LTug	-	24	-	24	-	27	-	16	-	11	-	15	
LBth	0	1	0	0	0	0	Q	0	0		0	18	3
LGeo	1	0	0	1	Q	0	0	0	5	0	7	0	

STILT AND AVOCET**Black-winged Stilt** *Himantopus himantopus***WBS:** LBth present Oct - Mar in small numbers. LGeo: mainly Jan - Apr.

	Jul	Aug	Sep	Oct	Nov	Dec	Jan	Feb	Mar	Apr	May	Jun
LBth	0	0	0	12		4	11	11	4	2	0	0
LGeo	0	0	0	2	Q	0	2	6	65	73	42	0

Red-necked Avocet *Recurvirostra novaehollandiae***WBS:** Only 1 record - 1/21 Jan LGeoN (LeM, DNR).**SANDPIPERS AND ALLIES****Common Sandpiper** *Tringa hypoleucos***Misc:** 1/13 Nov Uriarra Crossing GrG12 (PeB).**Greenshank** *Tringa nebularia***WBS:** Only 1 record: 1/25 Sep LBth (LeM).**Latham's Snipe** *Gallinago hardwickii***Misc:** 1/22 Nov CSIRO Gungahlin (GU), 1/12 Feb Acacia Inlet GrK13 (MuS).

Bar-tailed Godwit *Limosa lapponica***WBS:** 1 rare record: 2/22 Oct LBth (LeM, MaR).**Sharp-tailed Sandpiper** *Calidris acuminata***WBS:** LBth: Present Sep - Mar, max Oct, numbers overall smaller than in previous years. LGeo: present Jan - Apr. max Mar.

	Jul	Aug	Sep	Oct	Nov	Dec	Jan	Feb	Mar	Apr	May	Jun
LBth	0	0	19	134	18	4	.t	11	1	0	0	0
LGeo	0	0	Q	Q	0	0	4		0	170	22	0

Red-necked Stint *Calidris ruficollis***WBS:** LBth: present Sep - Mar, no winter records. LGeo autumn/winter.

	Jul	Aug	Sep	Oct	Nov	Dec	Jan	Feb	Mar	Apr	May	Jun
LBth	0	0	13	38	88	109	62		6	20	0	0
LGeo	0	0	0	0	0		0	0	0	5	3	2

Curlew Sandpiper *Calidris ferruginea***WBS:** Only 1 record: 1/19 Nov LBth (LeM, MiP1).**GULLS AND TERNS****Silver Gull** *Larus novaehollandiae***GBS:** Recorded at four sites in Holt, Campbell and Pialligo.**WBS:** LTug: only occasional visitor, max Feb. LBth in similar numbers to previous year (see Davey (1991) for comments on breeding). LGeo: max Apr.

	Jul	Aug	Sep	Oct	Nov	Dec	Jan	Feb	Mar	Apr	May	Jun
L T u g	-	3	-	2	-	0	-	8	2	-	3	0
LBth	1300	1550	1300	1800	1700	1130	<u>210</u>	122	388	890	783	673
L G e o	200	65	Q	170	Q	340	200	520	580	1820	450	0

Whiskered Tern *Chlidonias hybrida***WBS:** Only 2 records - 14/17 Dec LGeoN (LeM); 1 juv/24 Feb LBth (MiP1).**White-winged Tern** *Chlidonias leucoptera***WBS:** First records since 1962. 1 ad/20 Jan LBth (MiP1); 1 ad/25 Mar LBth (LeM, WAH).

PIGEONS AND DOVES

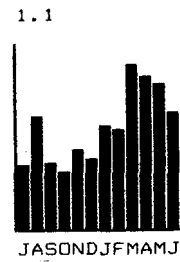
Feral Pigeon *Columba livia*

GBS: The pattern of declining abundance since 1984-85 was reversed in 1989-90 with abundance values up by 46%. Observations were spread over all weeks of the year and there were records at 33 of the 61 sites.

Average numbers recorded peaked in March, April, May.

Atlas: 23 non-breeding records. Apart from one from the Cotter Reserve 29 Aug GrG 14 (TaM), all were from within the Canberra urban area.

Misc: 124 non-breeding records. One breeding record - ny/8 Oct Campbell Pk GrM13 (TaM).



Peaceful Dove *Geopelia placida*

Misc: 1 record only from the Cotter Rd area where 5 sightings were reported in 1988-89. 1(escapee)/6 Jan Cotter/Pipeline Rd GrH14 (WAH. BeC).

Common Bronzewing *Phaps chalcoptera*

GBS: Records were down by 50% and more on recent years. A total of 25 records (28 birds) came from only four sites, Jul-Aug Holder GrI15 (AsM), Jan-Feb Chapman GrI15 (HAJ), Jan-Feb O'Connor GrK13 (VaJ) and Oct-Mar Cook GrJ13 (BrM).

Atlas: 9 non-breeding records.

Misc: 21 non-breeding records from 12 sites.

Crested Pigeon *Ocyphaps lophotes*

GBS: 26 records, a slight rise on 1988-89 (21), from eight suburbs (6). In ones or twos in all months - Jul-Nov Watson GrL12 (HoB), Sep-Jan Holt GrI12 (DaC), Nov Macgregor GrI12 (MoR). Mar and Jun Chapman GrI15 (HAJ, McA), Dec-Jan Kambah GrI15 (BeR). Oct-Nov Holder GrI15 (ThR), Nov Fisher GrJ15 (BiJ), Feb Pialligo GrM14 (RoA) and during 7 months Holt GrI12 (EGR).

Atlas: 12 non-breeding records from Grids 16, 17, 27, 40, 51 and 54.

Misc: 42 records from sites principally around the edges of Canberra, e.g. Chapman, Duntroon, Duffy, Watson, Arawang, Narrabundah, Holt and Mt Majura. Regular in small numbers at Murrumbateman (LeB).

COCKATOOS

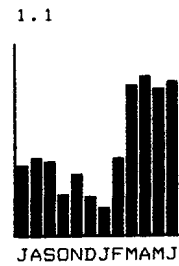
Yellow-tailed Black Cockatoo *Calyptorhynchus funereus*

Misc: 42 non-breeding records mostly outside the suburban area. Records in suburban area include 12/Oct Chapman GrI 15 (HoJ 1), 12/Oct Calwell GrK17 (PrK).

Gang-gang Cockatoo *Callocephalon fimbriatum*

GBS: More abundant (A=0.509) than 1988-89 (A=0.3). Breeding record dy/4wk Aug Ainslie GrL13 (FiB).

Misc: 296 non-breeding records.

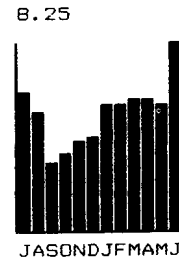


Galah *Cacatua roseicapilla*

GBS: Abundance down on 1988-89, following a decline the year before. First fle/4wk Nov Holt GrI12 (EGR) and Farrer GrK15 (SmM). last fle/4wk Apr Holt GrI12 (EGR).

WBS: Regularly sighted around LBth and LTug with largest number (149) at LBth 26 Mar (MiP2).

Misc: 1161 non-breeding records. Breeding records dy/3 Dec LGeo GrR11 (BeC). dy/1 Jan O'Connor Ridge GrK13 (McI).



Little Corella *Cacatua sanguinea*

Possible escapees.

GBS: 2 birds seen regularly from 4wk Feb to 2wk May in Holt GrI12 (EGR), 5/1wk April Ainslie (LeM).

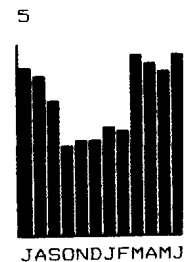
Misc: 1/27 Jul Gungahlin (OM), 1/1 Sep-15 Jan Kambah (WiS). 10/7 Jan Mugga

Lane Zoo GrL15 (PoH).

Sulphur-crested Cockatoo *Cacatua galerita*

GBS: Increase in abundance over last year. Breeding records dy/3wk Dec, 3wk Jan Garran GrK15 (AIR). 4wk Mar Holt GrI12 (EGR). **WBS:** Usually present LBth and LTug with largest number (146) at LBth 26 Mar (MiP2).

Misc: 1275 non-breeding records.



LORIKEETS

Rainbow Lorikeet *Trichoglossus haematodus*

Possible escapees.

GBS: 1 to 3 birds Jul. Oct, Nov, Dec, May and. Jun Aranda (HaK), 3/5wk Apr Kambah (VeP).

Musk Lorikeet *Glossopsitta concinna*

GBS: 1(possible escapee)/25 Feb Weston GrJ15 (LeB).

Little Lorikeet *Glossopsitta pusilla* **Misc:**

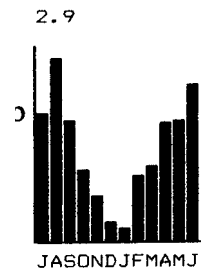
10/14 Jan Castle Hill GrJ18 (McD).

PARROTS

Australian King Parrot *Alisterus scapularis*

GBS: Abundance (A=1.368) up on 1988-89 (A=0.810). Recorded in 44 (72%) gardens, about the same as last year. Consistent seasonal pattern. Breeding records: dy/1wk Mar Garran GrK15 (AIR), 2wk Feb Weston GrJ15 (BoJ). and 4wk Jan Weston GrJ15 (LeB).

Misc: 110 non-breeding records.



Superb Parrot *Polytelis swainsonii*

Misc: 4/24 Oct Murrumbateman (PoH), 30/1wk Jan Evatt GrJ11 (G1J).

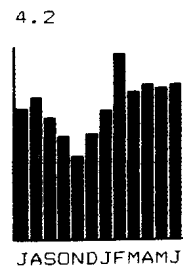
Cockatiel *Nymphicus hollandicus*

Addendum: 1988-89 Annual Bird Report (*CBN* 15(4): p. 101). Amend first sentence to read - "Five records of single birds in urban Canberra all probably escapees." **Misc:** 1(possible escapee)/9 Apr Curtin (VeP).

Crimson Rosella *Platycercus elegans*

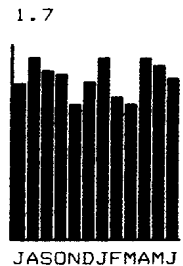
GBS: Consistent seasonal pattern, more abundant (A=2.909) than last year (A=2.465). First n/4wk Oct Aranda GrJ13 (OMP), first fle/1wk Dec Farrer GrK15 (ReD), last fle/4wk Feb Pearce GrJ15 (BeC). **WBS:** Usually around LBth max 23/26 Mar (MiP2).

Misc: 1241 non-breeding records.



Eastern Rosella *Platycercus eximius*

GBS: Abundance (A=1.42) up from last year (A=1.248). Breeding records include n/3wk Oct Ara4 non-breeding records from 50 sites, covering all months except Jan, Feb and Mar.



Mallee Ringneck *Barnardius barnardi*

Misc: 1(escapee)/26 Aug-15 Sep Watson GrL 12 (LuG).

Port Lincoln Ringneck *Barnardius zonarius* **Misc:**

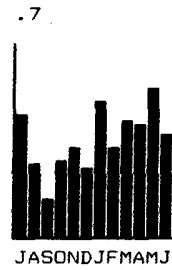
1/2(escapees)/1 Jan to 31 Aug Farrer (CRW).

Red-rumped Parrot *Psephotus haematonotus*

GBS: Slight increase in abundance ($A=0.357$) from last year ($A=0.334$) after very large decreases in abundance since 1984-85 ($A=0.76$). Largest flock 40/4wk Apr Page GrJ12 (MB).

WBS: Largest number 36/24 Jun at LTug (BiJ, WrM).

Misc: 348 non-breeding records.



CUCKOOS

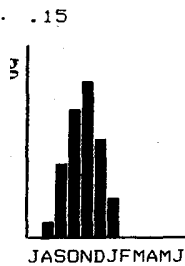
Pallid Cuckoo *Cuculus pallidus*

GBS: Average numbers slightly down on 1988-89. 78 records from 20

sites in all parts of Canberra. First 4wk Aug Aranda GrJ13 (HaK, OMP). last 3wk Jan Campbell GrL14 (RoC).

Atlas: 3 non-breeding records; 1/31 Jul Mt Rogers Gr7 (MaB), 1/Aug Gilmore Gr79 (GrB) and 1/10 Aug UNIC Gr15 (PeJ).

Misc: 11 non-breeding records. 4 breeding records dy(Yellow-faced Honeyeater)/1wk Jan Cotter Rd, GrH14 (WAH), dy(White-plumed Honeyeater)/2wk Jan Campbell Pk. GrM13 (LiB). dy(Brown-headed Honeyeater)/4wk Jan Urambi Hills, GrJ16 (PoH), dy(Leaden Flycatcher)/4wk Jan Campbell Pk, GrM14 (PoH).



Brush Cuckoo *Cuculus variolosus*

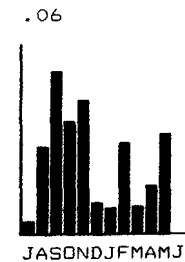
GBS: 2 records - 1/1wk Nov Weston GrJ15 (LeB), 1/2wk Mar Hughes GrK15 (AnB).

Misc: 4 non-breeding records - 1/6 Oct Enchanted Hill GrL18 (GrB). 1/5 Nov Ginninderra Falls GrG11 (TaM). 1/7 Nov Black Mtn GrK13 (LeB). 1/29 Dec Rob Roy Ra GrL19 (WrH).

Fan-tailed Cuckoo *Cuculus parrhophanus*

GBS: Abundance figure slightly down with 51 records from 13 sites across Canberra. covering all months except Jun. First 1/Swk Jul Ainslie GrL13 (FiB). last 4/2wk May O'Connor GrK13 (VaJ). $A=0.021$. $F=21.31\%$. $W=31$. $R=1.91\%$. $G=1.12$.

Atlas: 27 records from a number of sites none further south than Orroral Valley. First 1 Jul Farrer (ReJ) and Chapman (HoJ1). Misc: 54 non-breeding records from 50 sites. covering all months except Jan, Feb and Mar.



Horsfield's Bronze-Cuckoo *Chrysococcyx basalis*

GBS: Average numbers were down from the 1988-89 level to the levels of earlier years. Of the 24 records from 8 sites only one was from the southern suburbs (1/2wk Oct Holder GrI15 (ThR)). First 1/3wk Aug Bruce GrK12 (HaK). last 1/5wk Apr and 1/1wk May Aranda GrJ13 (OMP). Like the Jun record in Bruce 1988-89 these Apr and May records are exceptionally late, last usually being in February. A=0.009. F=13.11%, W=16, R=0.90%. G=1.04.

Atlas: 6 non-breeding records. First 1/8 Jul Mt Majura Gr17 (HoB).

Misc: 16 non-breeding records. 1 breeding record dy(Rufous Whistler)/25 Jan Urambi Hills GrJ16 (PoH).

Shining Bronze-Cuckoo *Chrysococcyx lucidus*

GBS: 41 records from 11 sites. Average numbers (A=0.015) were again at the larger level reported in 1988-89 (A=0.014). The seasonal pattern showed a change. Apart from four Jul records hum Ainslie GrL13 (FiB), all sightings were in the period from September to March. As for the previous species there were records from only one site in southern Canberra, Sep, Jan, Feb Chapman GrI15 (HAJ). First 1/1wk Jul Ainslie GrL13 (FiB), last 1/1wk Mar Holt 0112 (EGR). A=0.015, F=18.03%. W=25, R=1.53%, G=1.00.

Atlas: 11 non-breeding records.

Misc: 40 birds recorded at 36 sites.

Common Koel *Eudynamys scolopacea*

GBS: 1 record only - 1/2wk Nov Fisher GrJ15 (BiJ).

Misc: 9 non-breeding records - 1/8 Sep ANU GrK13 (MaP), 1/13 Nov Scullin GrI12 (McR). 1/17 and 19 Nov Fisher GrJ15 (BiJ). 1/18 Nov Cook GrJ13 (BuM). 1/30 Nov Lyons/Chifley GrJ15 (VeP). 1/17, 19, 22 Nov Fisher GrJ15 (WhJ), 1/4-8 Dec O'Connor GrK13 (ClM). 1/3 Jan Fisher GrJ15 (BiJ).

OWLS

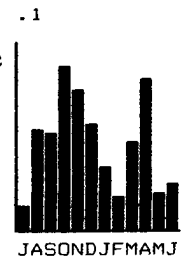
Southern Boobook *Ninox novaeseelandiae*

GBS: 106 records from 21 sites covering 127 birds. An increase on the 101 records of 1987-88 and 88 of 1988-89. A=0.047. F=34.43%, W=46.

R=3.96%. G=1.20.

Atlas: 8 non-breeding records.

Misc: 13 non-breeding records.



Barn Owl *Tyto alba*

Atlas: 2 non-breeding records - 1/19 Jul Coulter/Hovell Dr Gr24 (C1G), 1/Aug Mt De Salis Gr128 (HuN).

FROGMOUTH AND ALLIES

Tawny Frogmouth *Podargus strigoides*

GBS: 43 records, of which 38 from Cook GrJ13 (BrM) were the result of the regular observation of a pair which nested and raised one young. Other records in Ainslie GrL13 (FiB), Aranda GrJ13 (OMP), Chapman GrI15 (BrG) and Fisher GrJ15 (BiJ).

Atlas: 3 non-breeding records.

Misc: 4 non-breeding records

Australian Owlet-nightjar *Aegotheles cristatus*

GBS: 1 record - 1/4 Oct Kambah GrJ16 (VeP).

Atlas: 3 non-breeding records. 1/7 Jul Gr18 (CrI). 1/24 Jul Contour Rd Gr118 (HuN). 1/6 Aug Gr51 (SmD).

SWIFT

White-throated Needletail *Hirundapus caudacutus*

GBS: 39 non-breeding records: First 3/1wk Dec Weston GrJ15 (LeB). last 10/1wk Apr Aranda GrJ13 (OMP). Average group size of 10 was smaller than 1987/88 (18) and 1988/89 (35).

Misc: 2 non-breeding records covering 53 birds.

KINGFISHERS, BEE-EATER AND DOLLARBIRD

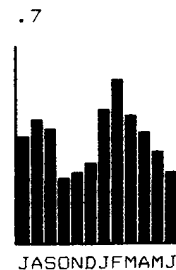
Laughing Kookaburra *Dacelo novaeguineae*

GBS: 553 nonbreeding records. The pattern of observation was similar to that of the two previous years with peaks in August and February. No breeding records.

WBS: Recorded at north end of LGeo on 20 Aug (BeR) and at LBth West as follows: 2/23 Jul, 2/24 Sep, 1/17 Dec and 3/26 Mar (MiP2).

Atlas: 191 non-breeding records.

Misc: 79 non-breeding records covering 138 birds.



Red-Backed Kingfisher *Halcyon pyrrhopygia*

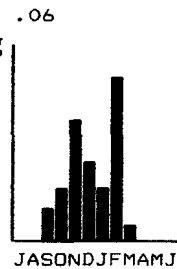
Misc: 1/5 Oct Acacia Inlet GrK13 (JoB,McB).

Sacred Kingfisher *Halcyon sancta*

GBS: Both spring and autumn peak evident this year. 30 non-breeding records. First 2/3wk Sep Kambah GrJ16 (WiS). regular records then until 2/4wk Feb Campbell GrL14 (RoC). Record of a single bird 4wk Mar Holt GrI12 (**EGR**).

Atlas: 7 non-breeding records.

Misc: 9 non-breeding records covering 10 birds. One breeding record dy/1 Jan O'Connor Ridge GrK13 (McI).



Rainbow Beeeater *Merops ornatus*

GBS: 3 non-breeding records only, all in first two weeks of Mar 1 Fisher GrJ15 (BiJ), 3 Weston GrJ15 (LeB) and 1 Holt GrI12 (DaC).

Atlas: 11 non-breeding records.

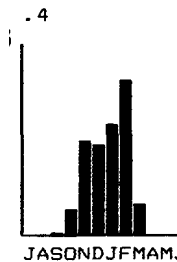
Misc: 3 non-breeding records covering 4 birds. first 30 Sep Arawang Hs GrI15 (BeR).

Dollarbird *Eurystomus orientalis*

GBS: 155 non-breeding records. First record 1/4wk Sep Aranda GrJ13 (OMP), last 2/4wk Mar O'Connor GrK13 (VaJ). Abundance increased slightly from last year. One breeding record dy/4wk Dec Chapman GrI15 (McA).

Atlas: 5 non-breeding records.

Misc: 8 non-breeding records, first 18 Oct Wallaroo Rd (LeB).



LYREBIRD

Superb Lyrebird *Menura novaehollandiae*

Atlas: 65 non-breeding records.

Misc: 7 non-breeding records covering 12 birds. One breeding record dy/19 Nov Booroomba Rocks GrH20 (LaM).

LARKS

Singing Bushlark *Mirafra javanica*

WBS: Again all records from Tuggeranong area. 3/22 Oct Silt Trap, Isabella Ponds (AIR). 2/22 Oct Point Hut and Stranger Ponds (HoJ1). 3/17 Dec Tuggeranong main lake (BiJ), 3/17 Dec Isabella Ponds. (DrA), 1/25 Feb Point Hut (HoJ1), 1/22 Apr Point Hut (HoJ1).

Misc: 2/30 Nov to 7 Dec Bonython GrJ17 (WhJ).

Skylark *Alauda arvensis*

GBS: 1 record only 1/4wk Apr Ainslie GrL13 (LeM).

WBS: Regularly recorded at all sites. No breeding records. Numbers at Tuggeranong ranged from single figures to 60 plus with larger flocks in winter. At LGeo numbers were around 10-20. At LBth numbers increased in winter with a maximum of 107 at the East Basin on 20 May (MiP1).

Atlas: 22 records.

Misc: 6 records of single birds.

SWALLOWS AND MARTINS

Welcome Swallow *Hirundo neoxena*

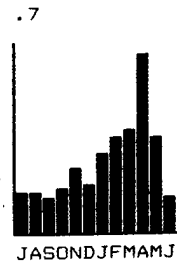
GBS: The average number seen (A) has risen for the second year running (1987/88 - 0.134, 1988/89 - 0.198, 1989/90 - 0.267). There was a slight decrease in observations in Sep (compare an increase in 1988-89) a slight peak in Nov but a major peak in Apr. (almost twice that of Mar and May). 1 breeding record: dy/4wk Nov Bruce GrK12 (HaK).

WBS: Regularly reported at all sites. At Tuggeranong numbers ranged from 27 in Dec to 63 in Aug with one breeding record - n3y/17 Dec (HoJ1). At LGeo numbers fluctuated from 600/23 Jul (LeM) to 6/29

Jun (DiB) but usually at least 30. At LBth numbers varied from 20 to 100 with one unusual sighting - 175/25 Mar Morass (DoM). At least 50% of these lairds were immatures, the others were all moulting.

Adam 120 non-breeding records_ An unusual record of birds carrying nesting material in Aug Tidbinbilla Tracking Station (RoT).

Misc: 79 non-breeding records covering 550 birds. Breeding records -ne/Sep Tidbinbilla Tracking Station GrH16 (RoT). ne/Sep Sutton Rd (TaM), ne/Oct ANU GrK13 (TaM).



Tree Martin *Cecropis nigricans*

GBS: 11 non-breeding records. 7 being in Pialligo GrM14 (RoA) during the months of Aug, Sep and Apr. One record of 200 birds 1wk/Jan Holt GrI12 (EGR).

WBS: At Tuggeranong recorded only three times 15/20 Aug, 16/22 Oct and 5/24 Jun Point Hut (HoJ1). At LGeo only two records 10/22 Apr and 15/20 May (LeM). At LBth recorded between Sep and Mar varying from 1 bird to 35 birds.

Atlas: 64 non breeding records.

Misc: 21 non-breeding records covering 82 birds. One breeding record, cf/Oct Gungahlin Hill GrK12 (RoT).

Fairy Martin *Cecropis ariel*

GBS: 1 record 2/1wk Apr Ainslie GrL13 (LeM).

WBS: 3/22 Oct and 24/17 Dec LTug (DrA, AIR, HoJ1). Noted carrying mud on 17 Dec (HoJ1). One record at LGeo 10/23 Jul (LeM). Recorded four times at LBth between 20 Aug and 17 Dec (MiP2. LeM).

Atlas: 1 non-breeding record in Aug.

Misc: 2 non-breeding records covering 10 birds.

PIPIT

Richard's Pipit *Anthus novaeseelandiae*

WBS: Recorded regularly throughout the year at Tuggeranong, cf/22 Oct (AIR) and ne/17 Dec (DrA). Also recorded regularly at LBth in numbers ranging up to 55/17 Dec (MiP2) and a ne/19 Nov (LeM). Also present at north end of LGeo.

Atlas: 56 non-breeding records.

Misc: 28 non-breeding records.

CUCKOO SHRIKES AND ALLIES

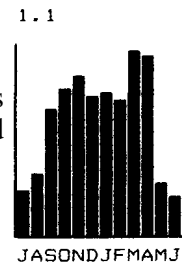
Black-faced Cuckoo-shrike *Coracina novaehollandiae*

GBS: Abundance very similar to last year being recorded at 95% of sites. Present all year but with a decrease in May to Aug inclusive. Nine breeding records: n/5wk Oct Aranda GrJ13 (MaD), with 7 records of cf or dy/Jan and Feb; dy/3wk. 4wk Oct. 4wk Dec, 2wk, 4wk Jan and 11wk Feb Farrer GrK15 (SmM).

WBS: 1/22 Oct and 2/22 Apr LTug (BiJ). 2/22 Oct and 1/22 Apr Point Hut (Hon); 2/24 Sep and 2/22 Oct LBth (MiP2), 1/22 Apr LBth (MiP1).

Atlas: 69 non-breeding records.

Misc: 81 non-breeding records covering 214 birds. Breeding records - nb/9 Oct and ne/30 Oct ANU GrK13 (TaM) and dy/Feb (McI, PoH, HoA).



White-bellied Cuckoo-shrike *Coracina papuensis*

Addendum: 1988/89 Annual Bird Report (CBN 15(4): p. 106) - **Misc:** Add - "1/7 Aug Campbell Pk (BaJ)".

GBS: 1/1wk Apr Yarralumla (CCR).

Cicadabird *Coracina tenuirostris*

Misc: 1 breeding record: ny/9 Dec Lowden Camp GrW19 (AIR).

White-winged Triller *Lalage sueurii*

GBS: 14 records of which 13 were in Stirling GrJ15, between 3wk Oct and 3wk Jan (JoD). 1 breeding record - dy/1wk Jan Campbell GrL14 (E1G).

Misc: 6 non-breeding records covering 9 birds.

THRUSHES, FLYCATCHERS, WHISTLERS AND ALLIES

White's Thrush *Zoothera dauma*

Atlas: 7 non-breeding records: 2/2 Jul Hurdle Ck Gr73 and 74 (CrI), 1/15 Jul Mt Aggie Gap Gr80 (BaI), 1/30 Jul Brandy Flat trail Gr142 (McD). 1/4 Aug Blue Gum Ck track Gr96 (MoR), 1/6 Aug Tidbinbilla (SmD).

Misc: 1/8 Apr Lyrebird Track GrF18 (TaM), 2/30 Jun 1km N of Narrabundah Hill GrI14 (LaJ).

Blackbird *Turdus merula*

GBS: Recorded at 58 sites and in all months. First n/1wk Sep Melba GrJ12 (MoM), last n/1wk Jan Watson GrL12 (HoB).

Atlas: 68 non-breeding records. Observations from established urban areas and along the Murrumbidgee R. Others include 1/29 Jul Moiwera Trig Gr75 (BiJ). 1/1 Aug Tidbinbilla Tracking Station Gr64 (RoT), 1/6 Aug Naas Rd GrI17 (LeB).

Misc: 65 reports covering 90 birds including 1/3 Sep Blundells Flat GrD14 (TaM). 1/24 Sep Booroomba Ck GrI20 (DCM). 1/29 Dec Rob Roy Ra GrL19 (WrfH).

2.3



Rose Robin *Petroica rosea*

GBS: 29 records from 11 sites. All values up on 1988-89. Absent from end Oct to early Apr. apart from 1 Dec record.

Atlas: 6 non-breeding records.

Misc: 10 non-breeding records. 1 breeding record - nb/15 Oct Lees Ck GrEI5 (TaM).

Pink Robin *Petroica rodinogaster*

Addendum: 1988-89 Annual Bird Report (CBN 15(4): p. 107) - Add "Pink Robin *Petroica rodinogaster* **Misc:** 1/30 Apr New Chum's Rd (BrM)".

Misc: 1/27 Apr Melba GrJ 12 (PuD).

Flame Robin *Petroica phoenicea*

GBS: 24 records (40 birds) from six sites in Pialligo GrM14 (RoA). Chapman GrI15 (BiG), Kambah GrJ16 (VeP), Arawang Hs GrI15 (BeR). Ainslie GrL13 (FiB) and Campbell GrL14 (RoC), Jul-Sep and Apr-Jun.

WBS: 4/23 Apr LBth (MiP2). 2/22 Apr LTug (BiJ).

Atlas: 80 non-breeding records.

Misc: 40 reports covering 93 birds. 4 breeding records.

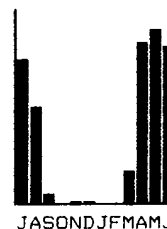
Scarlet Robin *Petroica multicolor*

GBS: 113 records from 27 sites. Apart from 2 records all were in the months Jul-Sep and Mar-Jun.

Atlas: 102 non-breeding records, widespread throughout the ACT.

Misc: 100 non-breeding reports covering 234 birds.

.2



Red-capped Robin *Petroica goodenovii*

Misc: 1/6 Oct Molonglo R, W GrH13 (RoT). 1/14 Oct Cook (JaG).

Hooded Robin *Melanodryas cucullata*

WBS: 1/25 Jun LBth, west (MiP2).

Atlas: 15 non-breeding records, including Environa Gr69, Naas Rd GrI27, Mt Clear GrI60, Moiwera Trig Gr75, Boboyan Rd GrI26.

Misc: 13 reports covering 24 birds. Three breeding records - ny/5 Oct Malcolmvale GrN13 (TaM), dy/6 Jan Cotter Rd GrH14 (WAH), dy/18 Mar Castle Hill GrI18 (VeP).

Eastern Yellow Robin *Eopsaltria australis*

GBS: 8 urban records from four sites. Chapman GrI15 (SBD). Ainslie GrL13 (FiB), O'Connor GrK13 (APC). Campbell GrL14 (EIG).

Atlas: 53 non-breeding records.

Misc: 54 reports covering 62 birds.

Jacky Winter *Microeca leucophaea*

GBS: 1 record - 2/2wk Apr Chapman GrI15 (SBD).

Atlas: 12 non-breeding records, including Lanyon Gr87, Huntly Hs Gr22, Naas Rd GrI27, Lobbs Hole GrI09, Gundaroo Rd Gr9 and Point Hut Crossing Gr77.

Misc: 3 non-breeding records. 15 Oct Uriarra Hs GrF13 (TaM). 2/28 Mar Murrumbateman GrI6 (LeB). 19 May Gundaroo Rd GrM10 (TaM)..

Crested Shrike-tit *Falcunculus frontatus*

Atlas: 12 non-breeding records, including Fishing Gap trail Gr83, Old Mill Rd Gr60, Smokers Gap Rd GrI13, Gundaroo Rd Gr9, Malcolmvale Gr28 and Lees Ck Gr47.

Misc: 12 non-breeding records covering 19 birds.

Olive Whistler *Pachycephala olivacea*

Atlas: 4 non-breeding records. Jul south of Smokers Flat GrI03 (MaB), 29 Jul Bendora Rd Gr61 (CrI), 12 Aug Creamy Flats trail GrI22 (TaM), 20 Aug Corin Rd Gr85 (DCM). No breeding records.

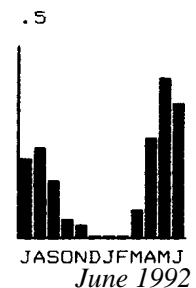
Misc: 1/8 Sep Corin Rd GrE20 (TaM), 1/4 Mar Emu Flat GrG20 (DCM).

Golden Whistler *Pachycephala pectoralis*

GBS: Reported at 32 sites with records in all months except Jan. All values up on 1988-89.

Atlas: 66 non-breeding records.

Misc: 66 non-breeding records covering 89 birds.

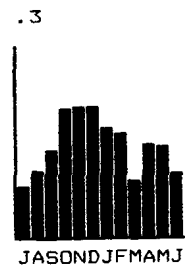


Rufous Whistler *Pachycephala rufiventris*

GBS: Reported from 42 sites with records in all months. 1 breeding record - dy/2wk Jan Bruce GrK12 (HaK).

Atlas: 18 non-breeding records.

Misc: 80 records covering 116 birds. 2 breeding records - on/3 Dec LGeoS GrR11 (BeC). dy/25 Jan Urambi Hills GrJ16 (VeP).

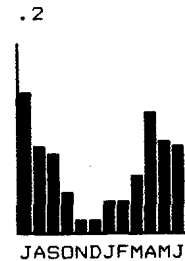


Grey Shrike-thrush *Colluricincla harmonica*

GBS: 116 reports from 20 sites. Recorded all months.

Atlas: 147 non-breeding records.

Misc: 117 reports covering 167 individuals.



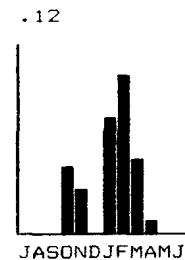
Black-faced Monarch *Monarcha melanopsis*

Misc: ljuv/20 Apr Melba GrJ12 (PuD).

Leaden Flycatcher *Myiagra rubecula*

GBS: 53 reports from 14 gardens covering 69 individuals. First 1/2wk Oct Aranda GrJ13 (OMP). last 5wk Apr Aranda (OMP).

Wim= 24 non-breeding records covering 28 individuals 1 breeding record - an/14 Jan Campbell Pk GrM 13 (LiB).



Satin flycatcher *Myiagra cyanoleuca*

GBS: 6 records, 1/1wk and 2/2wk Nov Melba GrJ12 (MoM), 4/4wk Oct Chapman GrI15(HAJ), 1/5wk Oct Weetangera GrJ13 (FyM), 1/3wk Oct Ainslie GrL13 (FiB), 1/ 1wk Nov Ainslie GrL13 (LeM).

Misc: 1/25 Feb Isaacs Ridge GrK15 (HoA), 1/14 Mar Isaacs Ridge extension GrL16 (HoA).

Restless Flycatcher *Myiagra inquieta*

GBS: Records from five gardens - 2/5wk Apr and 1/2wk Jun Chapman GrI15 (HAJ), 1/3wk Jun Macquarie GrJ13 (CoD), 1/2wk Feb and 2/4wk Mar Gilmore GrL16 (GrB), 1/1wk Mar Charnwood GrI1 (MaK), 1/4wk Mar Holt GrI12 (EGR).

WBS: 1/25 Jun LBth (MiP2).

Atlas: 22 non-breeding records.

Misc: 30 reports covering 40 individuals.

Rufous Fantail *Rhipidura rufifrons*

GBS: Reports from ten gardens in Chapman GrI15 (HAJ). O'Connor GrK13 (VaJ), Ainslie GrL13 (FiB, LeM). Garran GrK15 (AIR), Melba GrJ12 (MoM). Campbell GrL13 (CIS), Aranda GrJ13 (MaD), Cook GrJ13 (DaB) and Weetangera GrJ13 (FyM). Records in Oct, Nov, Dec, Jan and Apr.

Misc: Six records - 15 Oct Lees Ck GrEI5 (TaM). 25 Oct O'Connor GrK13 (VaJ). 7 Nov O'Connor GrK13 (NiH), 10 Dec Tallaganda State Forest GrU22 (FyM). 8 Apr and 5 May Aranda Bushland GrJ13 (DNR).

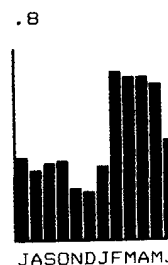
Grey Fantail *Rhipidura fuliginosa*

GBS: Records covering all months from 51 sites. 1 breeding record - dy/3wk Feb Cook GrJ13 (DaB).

WBS: 9/24 Sep LBth (MiP2).

Atlas: 53 non-breeding records.

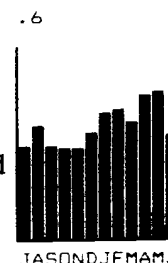
Misc: 151 reports covering 373 birds. 2 breeding records - dy/14 Jan Campbell Pk GrM13 (LiB), dy/17 Feb Mt Mugga Mugga GrK15 (HoA).



Willie Wagtail *Rhipidura leucophrys*

GBS: Records from 53 sites covering all months. All values up on 1988-89. 1 breeding record - dy/1wk Jan Campbell GrL14 (EIG). **WBS:** Recorded most months at LBth, up to 16 birds 17 Dec (MiP2). **Atlas:** 49 non-breeding records.

Misc: 126 reports covering 228 individuals. Breeding records - on an dy/3 Dec LGeoS S GrR11 (BeC). nb/6 Jan Cotter Rd GrH14 (WAH), dy/14 Jan Campbell Pk GrM13 (LiB).



WHIPBIRD AND QUAIL-THRUSH

Eastern Whipbird *Psophodes olivaceus*

Atlas: 2 non-breeding records only.

Spotted Quail-thrush *Cinclosoma punctatum*

Atlas: 21 non-breeding records. all from S and W ACT (ranges). except Jul S of Angle Crossing GrK22 (HuN).

OLD WORLD WARBLERS

Clamorous Reed-Warbler *Acrocephalus stentoreus*

GBS: 1 record only. 1/1wk Jan Pialligo GrM14 (RoA).

WBS: Recorded infrequently at LTug only (3/22 Oct, 19/17 Dec, 4/25 Feb). One breeding record, cf/17 Dec LTug (Hall, BiJ, BuA).

Atlas: 11 non-breeding records.

Misc: 5 non-breeding records and 1 breeding record - nb/4 Oct ANU GrK13 (T aM).

Little Grassbird *Megalurus gramineus*

WBS: 4 non-breeding records from LTug (2) and LGeoN (2).

Atlas: 4 non-breeding records, all LBG.

Misc: 1/7 Oct Majura Rd GrM13 (BaJ), 1/12 May Fyshwick Sewage Ponds GrLI4 (VeP).

Golden-headed Cisticola *Cisticola exilis*

GBS: 2 records from gardens near large areas of grassland. 1/1wk Feb Kambah GrI15 (BeR), 1-2/1wk Aug-2wk May Pialligo GrM14 (RoA).

WBS: Regular in small numbers at LBth, the first time it has been recorded regularly from this site, - max 7/24 Feb (MiP1), LGeo - max 8/25 May (LeM) and LTug - max 51/22 Apr (Hall). One breeding record: ne/22 Oct LTug (AIR, DrA, KiM).

Atlas: 15 non-breeding records.

Misc: 11 non-breeding records. including 1(road kill)/24 Mar 3km N of Murrumbatemen (LeB).

Rufous Songlark *Cinclorhamphus mathewsi*

GBS: No records, following the decline noted in 1988-89.

Atlas: 5 non-breeding records.

Misc: 7 non-breeding records.

Brown Songlark *Cinclorhamphus cruralis*

Large drop in number of records from 1988-89. 1m/19 Nov LBth (LeM).

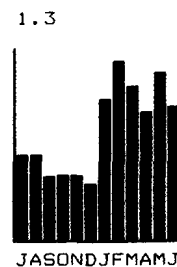
WRENS, THORNBILLS AND ALLIES

Superb Fairy-wren *Malurus cyaneus*

GBS: Recorded at 43 sites (F=70.49%), slightly down. However, both the average number of individuals recorded (A=0.749) and the number of weeks during which the bird was recorded (R=24.55%) increased quite markedly. The seasonal pattern was consistent with past years with the lowest recording rate being from Aug to Dec.

Atlas: 177 non-breeding records.

Misc: Total of 1624 birds recorded on 209 returns.



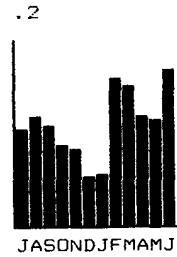
Pilotbird *Pycnoptilus floccosus*

Atlas: 4 non-breeding records. 1/9 Jul Fishing Gap Gr82 (BiJ). 1/6 Aug Fishing Gap Gr82 (CIG), 1/12 Aug Leura Gap GrI20 (TaM). 1/16 Aug Condor Ck Gr32 (BiJ).

Misc: 4 non-breeding records. 1/3 Sep Sunny Corner GrD15 (TaM), 1/5 Sep New Chums Rd GrE16 (TaM). 1/8 Sep Corin Rd GrE20 (TaM). 1/15 Oct Lees Ck GrE15 (TaM).

White-browed Scrubwren *Sericornis frontalis*

GBS: Records from 14 sites, generally in old-established suburbs. Most records are of birds in ones or twos but up to 7 individuals reported. Records cover sightings in all months. All values again up continuing the pattern of increases mentioned last year. A=0.108, F=22.95%, W=51, R=6.09%. G=1.78. 1 breeding record - n/1wk Aug Aranda GrJ13 (WeS). Atlas: 107 non-breeding records.



Misc: 95 non-breeding records for a total of 255 birds.

Chestnut-rumped Hylacola *Sericornis pyrrhopygius*

Misc: 1 record - 23 Feb Rolleys Flat GrE23 (TaM).

Speckled Warbler *Sericornis sagittatus*

GBS: Like last year the bulk of records (48) came from an O'Connor site GrK13 (APC). Present there all months in twos or threes. 1 record from Aranda GrJ13 (MaD).

Atlas: 26 non-breeding records.

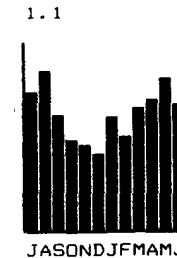
Misc: 48 records for a total 98 birds.

Weebill *Smicrorhis brevirostris*

GBS: The increase in numbers indicated last year again apparent with abundance up by 10% (A=0.682). Other values showing an increase were distribution (F=59.02%) and recording rate (R=24.40%). Records came from 36 sites and covered all months with largest figures again in autumn/winter. 5 breeding records - first nb/5wk Jul. last dy/2wk Jan.

Atlas: 68 non-breeding records.

Misc: 75 records included 294 birds.



Western Gerygone *Gerygone fusca*

GBS: 30 records of single birds from 8 sites. First 1/2wk Sep Ainslie GrLI3 (FiB), last 2/4wk Apr Macgregor GrI12 (MoR).

Atlas: 7 non-breeding records, all in the Ainslie area.

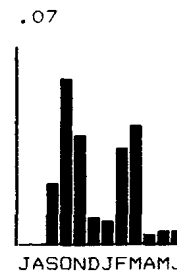
Misc: 24 non-breeding records. One breeding record - dy/24 Jan Campbell Pk GrM13 (LiB).

White-throated Gerygone *Gerygone olivacea*

GBS: 50 records of single birds from 17 sites. First 1/3wk Sep Fisher GrJ15 (BiJ), last 1/1wk Jun Chamwood GrI1 (MaK).

Atlas: 2 non-breeding records.

Misc: 42 non-breeding records totalling 51 birds.

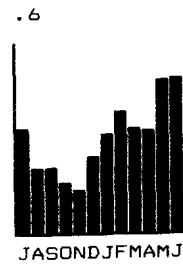


Brown Thornbill *Acanthiza pusilla*

GBS: Records from 25 sites covering all months. Seasonal pattern unchanged. All values up, A=0.298, F=40.98%. W=52, R=14.39%, G=2.07.

Atlas: 120 non-breeding records.

Misc: 109 reports covering 186 individuals.



Buff-rumped Thornbill *Acanthiza reguloides*

GBS: Records from 10 sites in Chapman. Pearce, Aranda. O'Connor, Ainslie, Holt and Cook. Values again down this year. Present all months with a marked decline in numbers during spring.

Atlas: 83 non-breeding records.

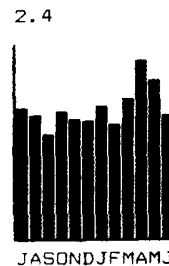
Misc: Reports from 96 sites covering 488 individuals.

Yellow-rumped Thornbill *Acanthiza chrysorrhoa*

GBS: The seasonal pattern again consistent with earlier years. Abundance and distribution values virtually unchanged. First n/1wk Aug Chapman Gr15 (HAJ). last n/5wk Oct Fisher Gr15 (BiJ), first dy/3wk Aug Kambah Gr16 (VeP), last dy/1 wk Mar Campbell Gr14 (EIG).

Atlas: 139 non-breeding records

Misc: Reports from 153 sites covering 951 birds.



Yellow Thornbill *Acanthiza nana*

GBS: 6 records (14 individuals) from 4 sites: Aranda, Cook, Holt and Pearce. Present only Aug Oct and Jun.

Atlas: 8 non-breeding records.

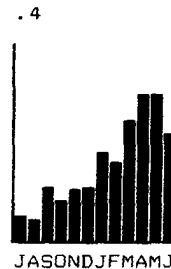
Misc: 11 records, 35 individuals.

Striated Thornbill *Acanthiza lineata*

GBS: 150 records from 27 sites in a wide area of Canberra. Values similar to last year apart from abundance down by 22% (A=0.160).

Atlas: 113 non-breeding records.

Misc: 337 individuals reported from 83 sites.



Southern Whiteface *Aphelocephala leucopsis*

Atlas: 21 non-breeding records.

Misc: 24 records with 65 individuals.

SITTELLA AND TREECREEPERS

Varied Sittella *Daphoensitta chrysoptera*

GBS: 23 records from three gardens (all near large suburban reserves). As in 1988-1989, all values except group size slightly down on the previous year, and no discernible seasonal pattern.

Atlas: 37 non-breeding records.

Misc: 19 non-breeding records. 1 breeding record - cf/2 Nov Rob Roy Ra GrL18 (TaM).

White-Throated Treecreeper *Climacteris leucophaea*

GBS: Average number seen (A) has returned to 1985-86 levels after steady increase in the intervening 3 years, (1985-86 0.052, 1989-90 0.050). Other values remain largely unchanged except recording rate (R) which continues to fluctuate. Seasonal pattern similar to 1988-89. Unusual breeding record: nb/1wk Oct Ainslie GrL13 (FiB).

Atlas: 201 non-breeding records.

Misc: 84 non-breeding records.

Red-Browed Treecreeper *Climacteris erythroptis*

Atlas: 15 non-breeding records.

Brown Treecreeper *Climacteris picumnus*

Atlas: 27 non-breeding records. One breeding record - ne/20 Aug S of Mulligans Flat Grg (LiM).

Misc: 24 non-breeding records. 2 breeding records - ny/4 Nov Fitzs Hill GrI21 (TaM), unsp/9 Nov Castle Hill GrJ18 (TaM).

HONEYEATERS

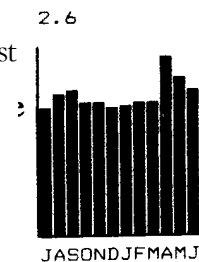
Red Wattlebird *Anthochaera carunculata*

GBS: Abundance increased slightly returning to level of year before last (1987/88 A=1.92, 1988/89 A=1.60, 1989/90 A=1.93). Present throughout the year with a slight peak in Apr. Breeding records include nb/4wk Sep Weston GrJ15 (LeB), n/1wk Oct and 2wk Dec Chapman GrI15 (HAJ), n/4wk Oct Aranda GrJ13 (MaD), n/1wk Nov Chapman 0115 (SBD).

WBS: 1/19 Nov LGeo (LeM), 1/22 Apr and 1/24 Jun LTug (BiJ).

Atlas: 83 non-breeding records and 7 breeding records.

Misc: 71 non-breeding records. 1 breeding record -dy/1 Dec O'Connor Ridge GrK13 (McI).

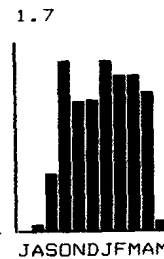


Noisy Friarbird *Philemon corniculatus*

GBS: Records in all months though very few in Jul, Aug, May, Jun. Abundance similar to last year which was slightly down on the year before. 12 breeding records mainly dependent young in Dec and Jan. nb/2wk Nov, lwk Dec Ainslie GrLI3 (FiB). n/2wk Nov O'Connor GrG12 (APC), n/3wk Nov Duffy GrI15 (PoH).

WBS: 6/22 Oct and 1/22 Apr LTug main lake (BiJ) and 3/22 Oct Point Hut (HoJ1).

Misc: 51 non-breeding records covering 104 birds. 2 breeding records - nb/29 Oct Mt Ainslie (TaM). dy/25 Mar Murrumbateman (LeB).



Little Friarbird *Philemon citreogularis*

GBS: 1 record 1/5 May Page GrJ12 (MB).

Misc: 1 bird at Fraser 9 Jan (PeJ).

Regent Honeyeater *Xanthomyza phrygia*

Addendum: 1988/89 Annual Bird Report (*CBN* 15(4): p. 114) Add - "1/10 Oct Chifley (HeB)".

GBS: Two records 1/1 Nov Hughes GrK15 and 2/5 Nov Braddon GrL13 (MB).

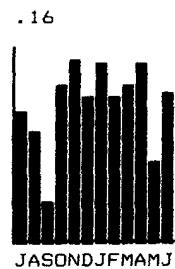
Misc: Eight records 1/7 Oct Gundaroo (HoR), 2/5 Nov Campbell Pk GrMI3 (McI), 1/10 Nov Campbell Pk (TaM), 2+1 juv/14 Jan Castle Hill GrJ18 (McD), still present on 20 Jan (VeP). 1/15 Jan 18km S of Captains Flat (StH), 1/12 Feb Holt GrI12 (GiJ), 1/20 Apr ANU GrK13 (PoH).

Noisy Miner *Manorina melanocephala*

GBS: Abundance (A) similar to last year which is half the 1987-88 level (1987-88 - 0.201. 1988-89 - 0.095. 1989-90 - 0.115). 1 breeding record - dy/1wk Nov Garran GrK15 (AIR).

Atlas: 46 non-breeding records covering 51 birds.

Misc: 23 non-breeding records. One breeding record - dy/8 Oct Campbell Pk GrM13 (TaM).



Yellow-faced Honeyeater *Lichenostomus chrysops*

GBS: Abundance this year similar to last year (A=1.861) but considerably down on the 1987/88 level (A=4.337). Occurrence similar to last year with a peak in Sep and another even larger peak in Apr. One breeding record - n/4wk Jan Chapman GrI15 (HAJ).

WBS: 2/20 Aug and 3/22 Apr LTug main lake (BiJ) and 2/22 Oct Isabella Ponds (AIR).

Atlas: 80 non-breeding records.

Misc: 81 non-breeding records covering 721 birds and 2 breeding records - nb/13 Oct GrK20 (TaM), dy/6 Jan Cotter Rd (WAH).



White-eared Honeyeater *Lichenostomus leucotis*

GBS: Abundance still down (1987/88 A=0.137; 1988/89 A=0.082; this year A=0.075). No records from Oct to Mar inclusive.

WBS: 2/17 Dec and 4/25 Feb LGeo ridge (LeM), 1/22 Apr and 1/24

Jun LTug main lake (BiJ).

Atlas: 116 records with no breeding recorded.

Misc: 27 non-breeding records covering 74 birds.



Yellow-tufted Honeyeater *Lichenostomus melanops*

GBS: 2 records only, both in winter. 1/1wk Jul Chapman GrI15 (HAJ). 1/3 wk Jun Curtin GrJ14 (BeS).

Atlas: 3 records in July Chapman (HoJ1), 1/9 Jul Gr64 (LaD) and 1 still in high country, Mt Clear 22 Jul (CIG).

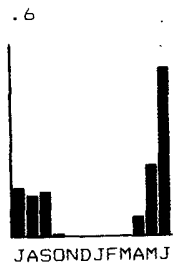
Misc: 2/16 Apr Glendale Crossing GrI23 (PoH).

Fuscous Honeyeater *Lichenostomus fuscus*

GBS: 31 records, none from Nov to Mar inclusive. Abundance this year (A=0.096) about half of 1988-89 (A=0.197) which itself was **well down on 1987-88 (A=0.294)**.

Atlas: 22 records, no breeding recorded.

Misc: 11 non breeding records totalling 26 birds.



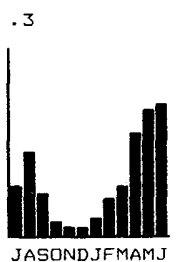
White-plumed Honeyeater *Lichenostomus penicillatus*

GBS: Another bird where abundance has declined. This year A=0.089,

1988-89 A=0.164. 1987-88 A=0.313. Again there appears to be slightly larger numbers recorded in winter months.

Atlas: 56 non breeding records.

Misc: 61 non-breeding records totalling 271 birds. Breeding records include nb/8 Oct Campbell Pk GrMI3 (TaM), dy/Oct One Tree Hill area GrK10 and ANU GrK13 (TaM), dy/Nov Castle Hill GrJ18 (TaM), dy/6 Jan Cotter Rd (WAH), dy/14 Jan Campbell Pk GrM13 (LiB), cf/15 Apr LGIN GrJ12 (AIB).



Brown-headed Honeyeater *Meliphreptus brevirostris*

GBS: 33 records this year from 5 sites (only one site last year). Up to 6 birds present in Chapman GrI15, in Jul, Aug then up to 8 present again in Apr, May, Jun (HAJ), 1-3 birds present Aug, Sep, Oct in Watson GrL12 (HoB). Other records 5/4wk and 2/5wk Apr Kambah GrJ16 (WiS), 2/2wk Jun Kambah GrJ16 (VeP), and 2/4wk Jun O'Connor GrKI3 (VaJ). No records from Nov to Mar inclusive.

WBS: 2/17 Dec LGeo ridge (LeM).

Atlas: 27 records, no breeding.

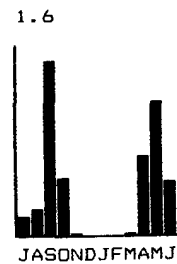
Misc: 16 non-breeding records totalling 41 birds. Breeding records - dy/3 Dec LGeoS GrR11 (BeC), 25 Jan Urambi Hills GrI15 (PoH).

White-naped Honeyeater *Melithreptus lunatus*

GBS: This species has also shown a decrease in abundance over the last three years - 1987/88 A=1.549, 1988/89 A=0.662, 1989/90 A=0.371. Very few records from Nov to Mar with major peaks in Sep and May. No breeding records.

Atlas: 46 non-breeding records.

Misc: 18 non-breeding records totalling 183 birds.



Painted Honeyeater *Grantiella picta*

Addendum: 1988/89 Annual Bird Report (*CBN* 15(4): p. 116) Add - "**Painted Honeyeater *Grantiella picta* Misc:** 1/Oct Tharwa (MoJ)".

Crescent Honeyeater *Phylidonyris pyrrhoptera*

GBS: 105 non-breeding records from 15 gardens in winter. No records from Nov to Mar. Abundance increased from last year. One breeding record dy/18 to 20 Oct Chapman 0115 (HAJ)

Atlas: 28 non-breeding records.

Misc: 6 non-breeding records totalling 13 birds.

New Holland Honeyeater *Phylidonyris novaehollandiae*

GBS: 23 non-breeding records from 6 sites. No records from Sep to 3wk Jan apart from 2/3wk Oct in Chapman Gr115 (BrG). Abundance similar to last year.

Atlas: 20 non-breeding records.

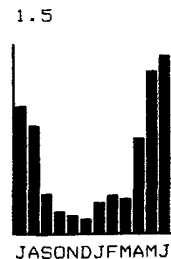
Misc: 7 non-breeding records covering 22 birds. One breeding record - dy/6 May ANBG GrKI3 (AIB).

Eastern Spinebill *Acanthorhynchus tenuirostris*

GBS: Abundance up slightly from last year to 1987/88 levels. As usual marked winter peak but small numbers of birds present all year. Two breeding records - dy/4wk Jan Chapman Gr115 (HAJ) and 4wk Feb Cook Gr13 (DaB).

Atlas: 82 non-breeding records.

Misc: 44 non-breeding records covering 163 birds.



CHAT, MISTLETOEBIRD, PARDALOTES AND SILVEREYE

White-fronted Chat *Ephthianura albifrons*

WBS: Regular in small numbers LBth (max 31 in Feb) and LGeo (Max 40 in Jan). 2 records only flow LTug in Feb and Apr.

Atlas: 2 non-breeding records - 2 Jul Cooleman Ridge Gr51 (PoH). 1 Aug Angle Crossing Gr118 (HuN).

Misc: 2 non-breeding records.

Mistletoebird *Dicaeum hirundinaceum*

GBS: Records from eight sites in Aranda. Weston. Chapman. Kambah and Turner. Average number seen fell ($A=0.019$) following the increases to 1988-89 ($A=0.040$). Other values were also down. First record 2wk Aug Ainslie GrL13 (FiB), last 4wk Apr Weston GrJ15 (LeB) and Ainslie GrL13 (LeM). Seasonal pattern unchanged.

Atlas: 5 non-breeding records

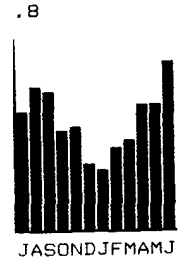
Misc: 34 records covering 38 individuals.

Spotted Pardalote *Pardalotus punctatus*

GBS: Records from 48 sites. Average numbers seen ($A=0.453$) again shows a marked decline (1987-88 - 0.862, 1988-89 - 0.658). Other values are also down. Breeding records - n/2wk Sep Kambah GrJ16 (VeP), cf/3wk Dec Campbell GrL14 (EIG), dy/2wk Feb O'Connor GrK13 (VaJ).

Atlas: 105 non-breeding records.

Misc: 127 non-breeding records, 316 individuals.

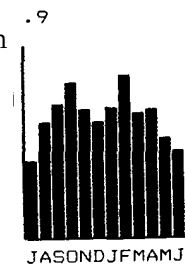


Striated Pardalote *Pardalotus striatus*

GBS: Records from 43 sites. Average numbers observed ($A=0.573$) again shows a decline (1987-88 - 0.803, 1988-89 - 0.655), as does distribution (F) (1987-88 - 82.9%, 1988-89 - 73.2%, 1989-90 - 70.49%) and recording rate (R) (1987-88 - 33.98%, 1988-89 - 29.63%, 1989-90 - 27.84%). One breeding record - n/4wk Oct Aranda GrJ13 (MaD).

Atlas: 61 non-breeding records.

Misc: 118 records totalling 278 individuals.

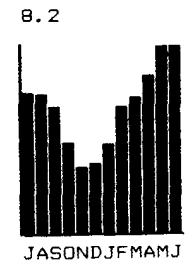


Silvereye *Zosterops lateralis*

GBS: Records from 58 sites. Seasonal pattern and values similar. Breeding records - first dy/1wk Nov Aranda GrJ13 (HaK), last dy/1wk Feb Bruce GrK12 (HaK), with others from Fisher (BiJ), Mawson (ChV), Garran (AIR) and Chapman (HAJ).

Atlas: 54 non-breeding records.

Misc: 115 records for 408 individuals.



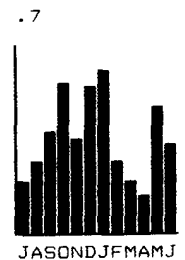
FINCHES AND SPARROW

European Goldfinch *Carduelis carduelis*.

GBS: Recorded at 38 sites covering all months. The average number observed similar to 1988-89 ($A=0.388$) suggesting a return to normal levels after a 20% increase in 1987-88. $A=0.36$. $F=62.30\%$, $W=52$, $R=11.32\%$. $G=3.15$.

Atlas: 81 non-breeding records

Misc: Recorded on 35% of data sheets. Breeding record - dy/1 Jan LGin GrJ 12 (McI).



European Greenfinch *Carduelis chloris*

Atlas: 1/8 Jul and I/20 Aug Jerrabomberra Wetlands Gr39 (BiJ). 1/17 Jul One Tree Hill Gr2 (MiP2).

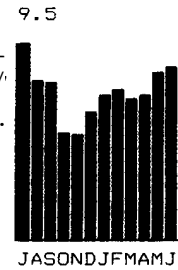
Misc: I/24 Sep Jerrabomberra Wetlands GrL14 (TaM).

House Sparrow *Passer domesticus*

GBS: Pattern of observation unchanged although abundance is marginally down compared with 1988-89 ($A=8.18$). First breeding record - cf/3wk Oct Giralang GrK12 (ReM), last dy/4wk Jan Stirling GrJ15 (JoD). $A=7.07$ $F=96.7\%$ $W=52$ $R=72.68\%$ $G=9.72$.

Atlas: 54 records in mainly urban locations.

Misc: Recorded on 30% of data sheets.

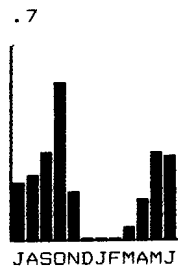


Red-browed Firetail *Emblema temporalis*

GBS: Recorded at 18 sites with records for all months, although very few in Dec. Jan and Feb. Abundance similar to 1988-89 ($A=0.19$) but observations were recorded at a larger proportion of sites ($F=20.0\%$). $A=0.20$ $F=29.50\%$ $W=39$ $R=3.92\%$ $G=5.02$.

Atlas: 90 records, including many riparian locations.

Misc: Recorded on 33% of data sheets. First breeding record - dy/14 Jan Campbell Pk GrMI3 (LiB), last nb/16 Jun ANU GrKI3 (PoH).



Diamond Firetail *Emblema guttata*.

GBS: 2 records only compared with eight in 1988-89 - 6/4wk Jul and 8/4wk Aug Kambah GrI15 (BeR).

Atlas: 13 non-breeding records.

Misc: Recorded on 8% of data sheets. Breeding records - dy/28 Jan Campbell Pk GrMI3 (LiB), dy/18 Mar Castle Hill GrI18 (VeP).

Zebra Finch *Poephila guttata*

GBS: A number of reports from two sites in O'Connor and Pialligo. Probable escapees.

Double-barred Finch *Paephila bichenovii*

GBS: A total of 158 birds recorded from 13 sites in groups of up to 15 and 20. All months except May. Average number seen (A) was up on 1988-89 (0.04). $A=0.06$, $F=21.31\%$, $W=27$, $R=1.53\%$, $G=3.85$.

Atlas: 12 non-breeding records. Records, widely spread, e.g. I/I Aug UNIC Gr14 (HaK), I/20 Aug Naas Valley GrI27 (BrM).

Misc: Recorded on 7% of data sheets.

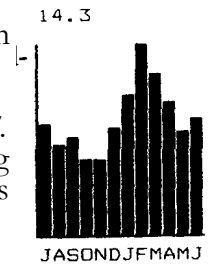
STARLING, MYNA, ORIOLE, DRONGO, BOWERBIRD AND MUDNESTERS

Common Starling *Sturnus vulgaris*

GBS: A most abundant species, yet the average number seen (A) is again down (1987-88 - 12.02, 1988-89 - 10.20, 1989-90 - 8.83). Breeding records include first n/3wk Sep Melba GrJ12 (MoM), last n/2wk Dec Campbell GrL14 (EIG). A=8.826 F=96.72% W=52 R=75.60% C7=11.67.

Atlas: 170 non-breeding records in widely spread locations. e.g. Aug Orroral Valley GrI14 (HoJ2). Aug Bulgar Ck Gr50 (WrH); Aug Naas Valley GrI26 (BrM).

Misc: Recorded on 50% of data sheets. Breeding records - cf/24 Dec LGeoS GrR11 and cf/6 Jan Cotter Rd GrHI4 (WAH).



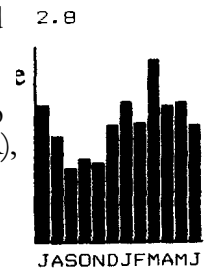
Common Myna *Acridotheres tristis*

GBS: Recorded at 32 sites (26 last year) only five of which were in northern suburbs. The average number seen has risen again, compared to 1988-89 (A=1.20). continuing the trend of recent years; and it is most widespread over the sites surveyed. 1988-89 F=46.4%.

A=1.72, F=52.5%, W=52, R=75.6%, C7=11.67. Group size ranged up to 58 Kambah GrI15 (BeR), others included 50 Yarralumla GrK14 (CCR), 50 Kambah GrJ16 (WiS), 46 Weston GrJ15 (LeB), 35 Chifley GrJ15 (BBF), 30 Duffy GrI15 (SeM), 30 Deakin GrK14 (NiA) and 30 Curtin GrJ15 (BeS). From the northern suburbs there were only three records of groups of more than 10 birds. all from Watson GrL12 (HoB) Breeding records - n/1wk Dec, dy/2wk Jan Farrer GrKI5 (SmM), dy/ 3wk Dec Kambah GrJ16 (WiS).

Atlas: 19 records from urban and peri-urban locations, e.g. 1/1 Jul Mt Arawang Gr52 (Bij), 1/12 Aug Mt Majura Gr17 (HoB).

Misc: Recorded on 8% of data sheets.

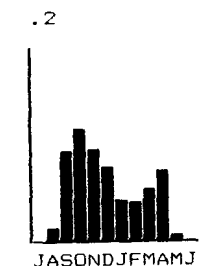


Olivebacked Oriole *Oriolus sagittatus*

GBS: Average number seen (A) up slightly on 1988-89, close to value for 1987-1988, reversing decline of previous 3 years. First 1/3wk Aug Turner (BaJ. CrJ) (early), last 1/1wk May Chapman (HAJ) (usual). Seasonal pattern unchanged.

Atlas: 9 non-breeding records.

Misc: 9 non-breeding records.



Satin Bowerbird *Ptilonorhynchus violaceus*

GBS: Large increase in all values, except group size (G), from 1988-89. 68 records from 9 sites (10 records from 4 sites in 1988-89). in Chapman, Duffy, Fisher, Holder and notably, Kambah (1/1wk Apr GrJ16 (VeP)). Max 8/1wk Feb Chapman 0115 (McA).

Atlas: 33 non-breeding records.

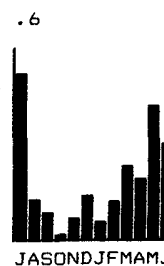
Misc: 2 non-breeding records.

White-winged Chough *Corcorax melanorhamphos*

GBS: Average number seen (A) continues to fall; 1988-89 - 0.299. 1989-90 - 0.186. Other values and seasonal pattern largely unchanged. 1 breeding record dy/3wk Nov Ainslie GrLI3 (FiB).

Atlas: 80 non breeding records.

Misc: 35 non-breeding records. 3 breeding records: ny/4 Oct ANU GrK13 (TaM), ne/7 Oct Carrington Rd GrK10 (TaM). ne/13-14 Oct Gungahlin Hill GrK12 (RoT).



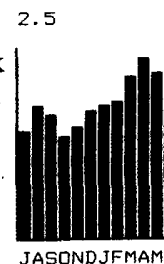
Australian Magpie-lark *Grallina cyanoleuca*

GBS: Average number seen (A) returned to levels similar to 1985-86, reversing decline of past 3 years. Seasonal pattern similar. First 0/2wk Aug Ainslie GrLI3 (LeM), last n/2wk Dec Farrer GrKI5 (SmM) (both early).

WBS: 32 non-breeding records. 3 breeding records at LGeoN (I) and LTug (2).

Atlas: 150 non-breeding records. 14 breeding records including ne/28 Aug Pialligo (LeB).

Misc: 94 non-breeding records. 6 breeding records - ne/Sep Tidbinbilla Tracking Station GrH16 (RoT). ny/3 Oct ANU GrK13 (TaM), ny/2 Nov Rob Roy Ra GrL18. dy/8 Nov ANU GrKI3 (TaM), ny/3 Dec LGeoS GrR11 (BeC), dy/1 Jan Campbell Pk GrM13 (McI).



WOODSWALLOWS

Dusky Woodswallow *Artamus cyanopterus*

GBS: Recorded at 11 sites. A return to 1987-88 levels after complete absence of records for 1988-89; distribution (F) is up markedly on previous years (1985-86 - 1.1, 1986-87 - 4.5, 1987-88 - 8.6, 1989-90 - 18.0). Seasonal pattern similar, first 1/1wk Aug Kambah GrI15 (BeR) (early), last 3/3wk Apr Pialligo GrM14 (RoA). 2 breeding records: dy/1wk Dec Pialligo GrM14 (RoA), dy/5wk Jan Bruce GrK12 (HaK).

Atlas: 26 non-breeding records.

Misc: 43 non-breeding records. 7 breeding records - nb/28 Sep LGin (DaP). nb/9 Oct, ne/18, 30 Oct, ny/30 Oct all ANU GrK13 (TaM). dy/1 Jan Campbell Pk GrM13 (McI), dy/25 Jan Urambi Hills GrJ16 (PoH).

BUTCHERBIRDS, MAGPIE AND CURRAWONGS

Grey Butcherbird *Cracticus torquatus*

GBS: Recorded at four sites in Kambah, Holder and Ainslie. Typical small number of records during Mar-Nov.

Atlas: 32 non-breeding records.

Misc: 8 non-breeding records.

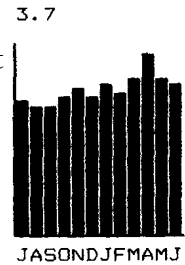
Australian Magpie *Gymnorhina tibicen*

GBS: A and R values slightly up on 1988-89, but other values and season pattern largely unchanged. First nil wk Jul Farrer (SmM), last n/ 5wk Oct O'Connor (VaJ), first fle/1wk Aug Pialligo (RoA). last fle/1wk Jan Kambah (VeP).

WBS: 44 non-breeding records, 1 breeding record 12n/20 Aug LBth (MiP2).

Atlas: 277 non-breeding records, 42 breeding records.

Misc: 138 non-breeding records, 4 breeding records.

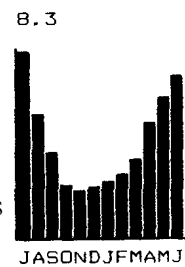


Pied Currawong *Strepera graculina*

GBS: Average number (A) down again on previous year (1987-88 -4.968. 1988-89 - 4.357, 1989-90 - 4.185), other values and season pattern largely unchanged. First n/2wk Sep Duffy GrI15 (PoH). last n/ 4wk Aranda GrJ13 (OMP). first fle/4wk Oct O'Connor GrK13 (Cr), last fle/2wk Jan Bruce GrJ13 (HaK).

Atlas: 2 non-breeding records, breeding records.

Misc: 92 non-breeding records, 1 breeding record. Six breeding records - ne/19 Sep Civic GrLI3 (TaM). ne/4 Oct ANU GrK13 (TaM). nb/7 Oct Kambah GrJ16 (VeP), ne/7 Oct Mt Pleasant GrL14 (RoT). cf/18 Oct ANU GrK13 (TaM), ny/30 Oct ANU GrK13 (TaM).

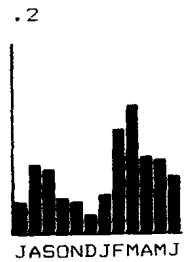


Grey Currawong *Strepera versicolor*

GBS: Records from 18 sites. All values except group size (G) and number of weeks recorded (W) up on 1988-89. Seasonal pattern similar.

Atlas: 77 non-breeding records.

Misc: 24 non-breeding records. 3 breeding records - nb/7 Sep Bidges rd GrN12 (TaM), ny/7 Oct Campbell Pk GrM13 (PoH), dy/2 Nov Rob Roy Ra GrL18 (TaM).



RAVENS

Australian Raven *Corvus coronoides*

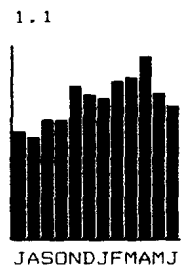
GBS: Average number seen (A) continues to rise (1987-88 - 0.640. 1988-89 - 0.747, 1989-90 - 0.783); other values and seasonal pattern largely unchanged. 3 breeding records; dy/4wk Nov Ainslie GrLI3 (FiB), dy/4wk Jan Stirling GrJ15 (JoD), dy/3wk Feb Chapman GrI15 (HAJ).

WBS: 20 non-breeding records, one breeding record; 2n/20 Aug LGeo (BeR).

Atlas: 211 non-breeding records, 12 breeding records including ne/28

Aug Molonglo R. Gr39 (LeB).

Misc: 110 non-breeding records. Breeding records included - ne/24 Sep LBGE GrL14 (TaM), ny/3 Oct ANU GrK13 (TaM), ne/19 Oct Weston Pk GrK14 (TaM). ny/2 Nov Rob Roy Ra GrLI8 (TaM).



Little Raven *Corvus mellori*

GBS: Records from nine sites. All values up on 1988-89; as stated in the 1988-89

ABR. numbers fluctuate widely from year to year with no apparent pattern.

WBS: 10 non-breeding records from LBth (9) and LGeo (1).

Atlas: 46 non-breeding records.

Misc: 8 non-breeding records.

HELP WANTED

From time to time we need people to assist with the entering of records from our various projects into the COG Database. If you have a personal computer that runs on a DOS operating system and would like to assist please contact Malcolm Fyfe Ph. 254 3310. We will provide the necessary input program and data sheets.

Many thanks,
Projects Subcommittee

COG RESEARCH GRANTS

In order to encourage the study of birds, the Canberra Ornithologists Group has made available a sum of money to provide small research grants to people undertaking studies relating to the birds of Canberra and district. These grants are administered by the Projects Subcommittee and preference is given to COG members seeking grants of up to \$100 for studies relating to the birds of Canberra and district.

Application forms can be obtained by writing to: The Secretary, Projects Subcommittee, COG, P.O. Box 301, Civic Square, Canberra, A.C.T. 2608.

This page intentionally blank

Projects Subcommittee:

Malcolm Fyfe (Secretary - 254 3310), Grahame Clark, Chris Davey, Michael Lenz, David Purchase.

Rarities Panel:

Sue Webb (Secretary - 251 5407), Barry Baker, Graeme Chapman, Grahame Clark, Mark Clayton, Jack Holland, Bruce Male.

Records and Library Subcommittee:

Malcolm Fyfe, Graham Browning.

Shopfront Management Subcommittee:

Sarah Thomas (Convenor - 281 4982), Jenny Bounds, Grahame Elliott, Robyn Elliott.

Annual Subscriptions for 1992 are: Student (18 years of age and younger) \$8.50; Individual \$17.00; Family \$20.00; Institutions \$20.00. All receive one copy of *Canberra Bird Notes*.

Production and distribution of *Canberra Bird Notes*:

1. **Typing:** Louise Russell
2. **Camera-ready Copy:** Cedric Bear
3. **Printing:** Lowes - Printer
4. **Distribution:** Ann McKenzie and helpers

BIRD SONGS OF CANBERRA

Price **\$10**

This cassette contains recordings of the songs and calls of 73 birds that are commonly heard in Canberra gardens and parks. The majority have been recorded in Canberra or the surrounding area. Seasonal variation in songs have been included where appropriate.

Available from COG, PO Box 301, CIVIC SQUARE ACT 2608 or monthly meetings.

Canberra Bird Notes is published quarterly by the Canberra Ornithologists Group. Contributions are welcome. These should fit into one of the following categories: major articles (up to about 3000 words); short notes and "Odd Obs" (up to about 300 words); reviews of books and articles (up to about 500 words); and where to watch birds (up to about 800 words). The articles and notes should cover matters of the distribution, identification, and behaviour of birds in the Australian Capital Territory and surrounding area (i.e. New South Wales coast north to Jervis Bay, and west to the Riverina). Contributions can be sent to the editors c/o David Purchase, 5 Orchard Place, Melba, ACT 2615 (Tel 258 2252).

CONTENTS

Canberra Bird Notes 17(2) June 1992

Annual Bird Report: 1 July 1989 To 30 June 1990

Canberra Ornithologists Group

Introduction	17
Highlights of the Year	17
Rainfall and Temperature	20
Garden Bird Survey	21
Waterbird Survey	24
"Atlas" Project and Miscellaneous Records	25
Acknowledgements	26
References	26
Appendix 1 (Explanatory Notes, Statistical Methods, Abbreviations, and Observer Codes)	27
Appendix 2 (Systematic List)	32

(Issued September 1992)